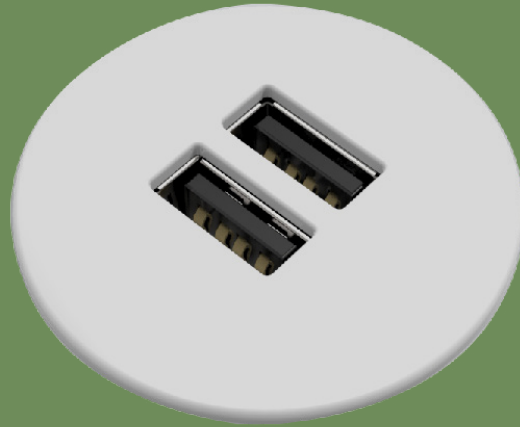


ATOM In-Desk Module





ATOM

In Desk Solutions

Atom delivers USB fast charging in a minimalistic housing. It's designed to integrate seamlessly into loose furniture, personal workstations and collaborative/shared areas.

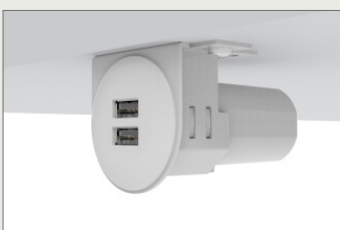
Atom features a intuitive self-fastening paddle design allowing installers to surface-fit the unit without the need for a bottom fastening ring, reducing installation time onsite.

Colours Available

White Black

Key Features

- » Tiny external fascia profile
- » Powerful 6A USB charging module
- » Self fastening paddle design allows surface-top install without the need of a bottom fastening ring.
- » Under-desk mounting bracket available
- » Daisy-chain capability (subject to power requirement)



Product Details

Atom

AMAAWT	Atom USB Charging Module 2 x 3A Includes White and Black fascia	AMD**	Under-desk mounting bracket for Atom module
---------------	--	--------------	---

Notes:

** Denotes standard colours Black (BK) or White (WT) S

Technical Data

Atom

Input	12V DC, 3A
Max output total (combined)	5V DC, 6A
USB outlets	2 x USB-A
Standby power	0.4W @ 12V
Short circuit protection	USB will shut down if short circuit detected and will recover once short circuit removed.
Operating temperature range	0-40C
Compliance	CISPR32:2015
Lead Length	3 Mtr

USB-A Ports

Overcurrent Protection	Input > 3A
	Output 3.2A ~ 4.5A (per port)

Port 1

Normal	5V / 2.4A max; D+D – auto identify BC 1.2 / Samsung / Apple
QC3.0	3.6-6.5V / 3A max; 6.5 - 9V / 2A; 9V - 12V / 1.5A
QC2.0	9V / 2A; 12V / 1.5A

Port 2

Normal	5V / 2.4A max; D+D – auto identify BC 1.2 / Samsung / Apple
QC3.0	3.6-6.5V / 3A max; 6.5 - 9V / 2A; 9V - 12V / 1.5A
QC2.0	9V / 2A; 12V / 1.5A