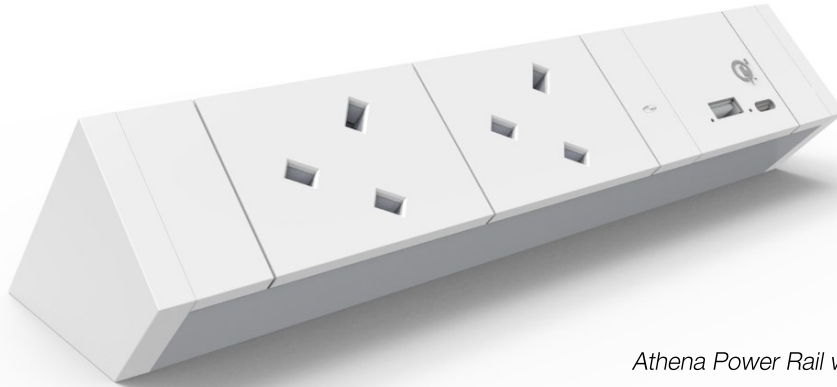


INLINE USB-C 30W

Qualcomm® & Power Delivery (PD) Intelligent Charging



Athena Power Rail w/ Inline USB-C 30W module

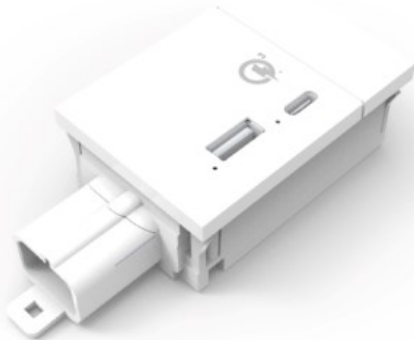
FUTUREPROOF SOLUTION FOR ALL APPLICATIONS

CMS is consistently developing and updating its power, data and charging modules, adapting products to suit the latest user requirements and applications.

The Inline USB-C module features both Qualcomm® Quick Charge™ and PD technology capable of delivering up to 4 x faster charging to Qualcomm® and PD enabled devices

PRODUCT FEATURES:

- Dedicated USB-C port with indicator light to differentiate between standard and Qualcomm® / PD fast-charging
- Inline USB-C 30W can be integrated to suit above, below and recessed applications in a range of housings.
- Optimised Fast Charging to Apple, Android & Windows Devices



Inline USB Qualcomm USB-AC 30W adaptor module

ORDERING INFORMATION	
PART NO.	DESCRIPTION
SQ18UAC3	SW18 Series Inline USB-C 30W Module with Qualcomm® & PD Intelligent Charging

NOTE:

- An L3D Splitter is required with this solution as there is no 'OUTPUT' on the USB end when engaged to a CMS GPO
- ** Denotes colour White (WT) or Black (BK)
- **USB power supply is only suitable for information technology equipment.**

INLINE USB-C 30W

Technical Specification

Description	Data
Input	100-240V AC
USB outlets	1 x USB-C - Qualcomm® & PD Intelligent Charging
	1 x USB-A standard charge
Standby power	<0.15W
Over voltage protection	20-24V
Overcurrent protection	4.3-5.5A
Short circuit protection	USB will shut down if short circuit detected and will recover once short circuit removed.
Over power protection	70W
Operating temperature range	0-40C
Compliance	AS/NZS 60950.1
	CISPR32:2015
Qualcomm® Quick Charge™ Specification	
Quick Charge™ 2.0 Enabled Devices	2A @ 9V DC
	1.5A @ 12V DC
Quick Charge™ 3.0 Enabled Devices	3A @ 3.6 - 6.5V DC
	2A @ 6.5 - 9.V DC
	1.5A @ 9 - 12V DC
Charging indication	Blue LED
No charging	LED off
Qualcomm® Quick Charge™ compatible devices	refer www.qualcomm.com/quickcharge
PD Specification	
Max standard output with no connected devices in Port 2	1.5A @ 20V / 2A @15V / 3A @ 9V
Max output with USB-A Port 2 engaged (higher than 500mA)	0.75A@20V / 1A@15V / 1.5A@9V
Charging indication	Blue LED
No charging	LED off
USB-A port 2	
Max standard output with no connected devices in Port 1	2.1A @ 5V DC
Max output when QC port output exceeds 1.5A	1A @ 5V DC
Max output when QC port output lower than 1.5A	2.1A @ 5V DC
Charging indication	Green LED
No charging	LED off