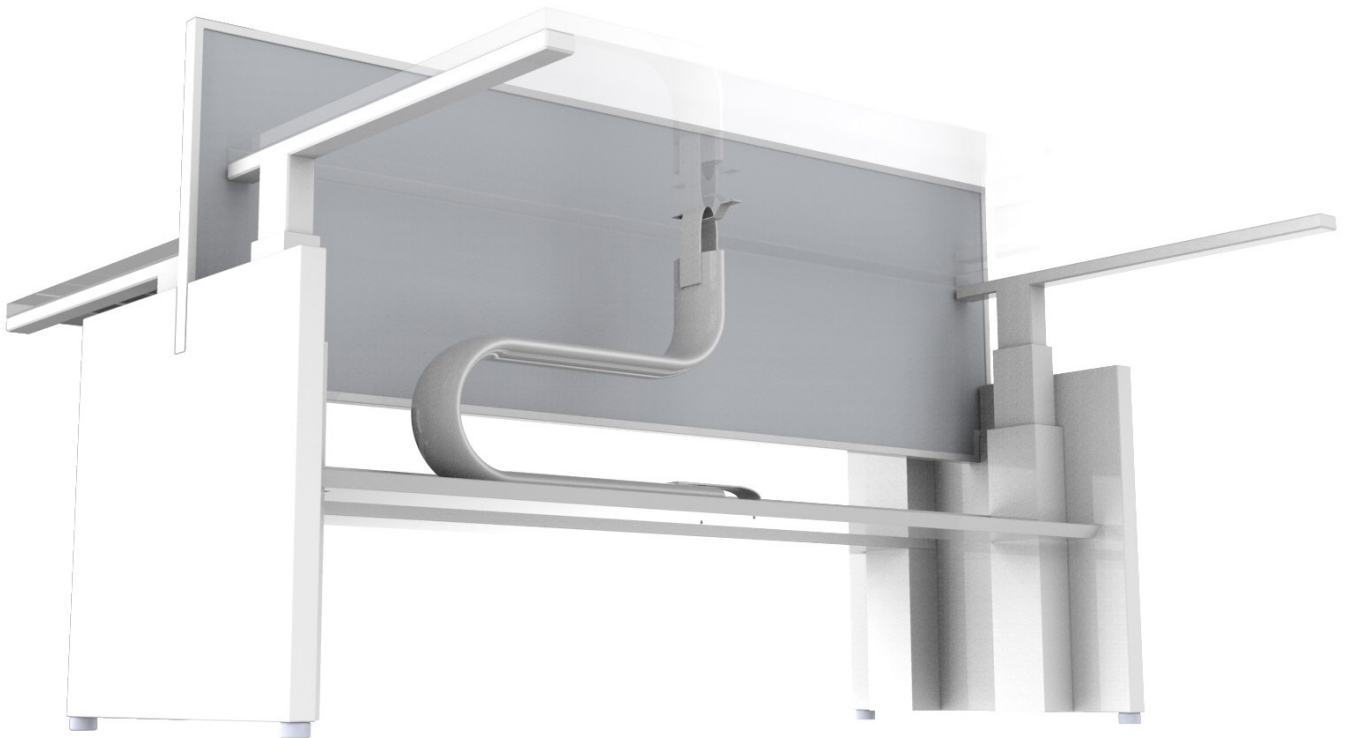


# CABLE SHUTE

## Static Cable Management

Cable Shute series cable management is specifically designed to protect and organise power and data cables in a height adjustable or static table application. Cable Shute features two internal velcro-release partitions for separation of power and data. All components attach together simply and on-site adjustment made easy by adjustable velcro straps.



## Colors Available

White  Black

## Key Features

- » 2 internal velcro-release pockets for separation of cables
- » Adjustable Velcro top and bottom straps allow for adjustment in length.
- » Zip fastening for easy access.
- » Standard colors Black and White. Alternative colors and lengths available (MOQ and POA apply).
- » 2 lengths and widths to suit static and dynamic workstations.

## Product Details

### Cable Shute

|                  |  |
|------------------|--|
| <b>CSFD75*/#</b> | Cable Shute - Floor To Desk Kit Complete With Mounting Foot For Desk Mounting (CST) & Round Disk Floor Base (CSG#) 750mm long x 120mm wide |
| <b>CSFD97*/#</b> | Cable Shute - Floor To Desk Kit Complete With Mounting Foot For Desk Mounting (CST) & Round Disk Floor Base (CSG#) 975mm long x 80mm wide  |
| <b>CSH75*/#</b>  | Cable Shute - Height Adjustable Kit Desk Complete With 2x Desk-Mounted Fixing Bracket (CST) 750mm long x 120mm wide                        |
| <b>CSH97*/#</b>  | Cable Shute - Height Adjustable Desk Kit Complete with 2 x Desk-Mounted Fixing Bracket (CST) 975mm long x 80mm wide                        |
| <b>CS0897**</b>  | Cable Shute - 975 mm long x 80mm wide - Floor To Desk Workstation Cable Shute.   |
| <b>CS1275**</b>  | Cable Shute—750mm long x 120mm wide - Floor To Desk Workstation Cable Shute.   |
| <b>CST#</b>      | Desk Mounting Fixing Bracket For Under Desk To Hang Cable Shute.   |
| <b>CSG#</b>      | Umbilical Round Disk Floor Base c/w Handle Joiner And Locking Pins   |