

CENTRA

In Desk Solutions

CMS Centra Series in-desk module effectively incorporates power, fast-charge USB/transfer, data and AV into any flat desktop or vertical surface.

Centra Series modular design allows any configuration of services, making it an ideal solution for workstations, meeting and conference tables, collaborative and public spaces, as well as vertical surfaces including screens, walls or soft furniture.

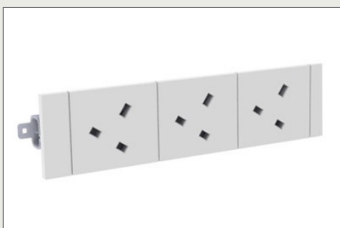
Colours Available

White Black

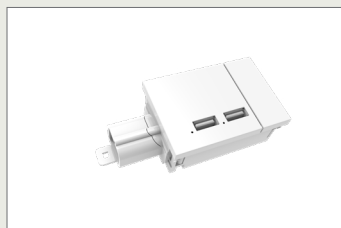
Key Features

- » Innovative rotating outlet covers recess cleanly on the table surface.
- » Quick and easy to install.
- » Auto-clamping paddles enable easy top-side installation.

Configures with:



Auto Switched Power Module



Inline USB Charging Modules

Product Details

NKCE0202C10**	2x Power Modules and Provision for 2x Data, 1000mm Lead, C Series Plug
NKCE02AA3C10**	2x Power Modules, 1x Inline USB A/A PD Fast Charge Module (30W shared), 1000mm Lead, C Series Plug
NKCE02UAC3C10**	2x Power Modules, 1x Inline USB A/C PD Fast Charge Module (30W shared), 1000mm Lead, C Series Plug
NKCE0402C10**	4x Power Modules and Provision for 2x Data, 1000mm Lead, C Series Plug
NKCE04UAA3C10**	4x Power Modules, 1x Inline USB A/A Fast Charge Module (30W shared), 1000mm Lead, C Series Plug

Notes:

- Denotes standard colours White (WT) or Black (BK).
- The rotated cover GPO must be used when the product is installed into flat surfaces.
- For use with IT equipment only.
- Use of cleaning agents: Please ensure cleaning agents are compatible for use on moulded polycarbonate surfaces. Should any sign of degradation, cracking or discolouration be present or occur, immediately discontinue the use of the cleaning agent.
- International socket outlet version available to be specified