

# Data & AV Modules

## Data & Communications

Compatible with NB series brackets and Accede boxes.



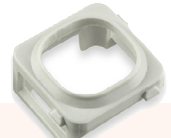
**BPM**  
Data blanking plug



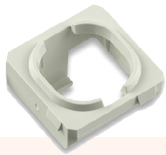
**BEZG**  
Bezel



**BPG**  
Bezel Plug Grommet



**BEZK**  
Keysytone adaptor clip



**BEZPD**  
Panduit Adaptor clip



**BEZSMC**  
Data Adaptor Clip

## Product Details

<b>BPM**</b>	Blanking Plug
<b>DB1703A**</b>	Triple data plate to suit thin panel mounting up to 2mm thick (SUITABLE FOR CLIPSAL)
<b>BEZG**</b>	Bezel
<b>BZG-10**</b>	Bezel Plug Grommet (pack of 10)
<b>BEZK**</b>	Keysytone adaptor clip
<b>BEZPD**</b>	*Panduit adaptor clip

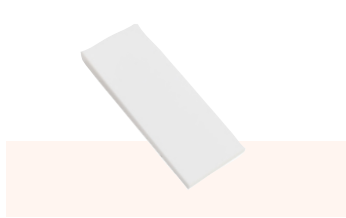
\*\*Denotes Socket Colour: Black (BK), White (WT)

## Key Features

- » Available in 1,2,3 or 4 outlet data configuration, also available as a blank for future provision.
- » SW18A-C series requires no tools for mounting. Standard module will snap into panel up to 2mm thick.
- » SW181 module with thick panel bracket requires no tools for mounting and will snap into panel greater than 2mm thick.

# SW Series Tiles

## Data & Communications



**SWQ18A**  
18mm Blank plate



**SWQ18B**  
25mm Blank plate



**SWQ18B-1**  
25mm Single data plate



**SWQ18B1K**  
25mm Single plate



**SWQ18C45D**  
50mm Tile c/w 45 Degree deep  
data tile

## Product Details

<b>SWQ18A**</b>	18mm Blank plate to suit thin panel mounting up to 2mm thick
<b>SWQ18B**</b>	25mm Blank plate to suit thin panel mounting up to 2mm thick
<b>SWQ18B1**</b>	25mm Single plate to suit thin panel mounting up to 2mm thick
<b>SWQ18B1K**</b>	25mm Single plate to suit thin panel mounting up to 2mm thick - to suit Keystone data
<b>SWQ18C45D**</b>	50mm Tile c/w 45 Degree deep data tile

\*\*Denotes Socket Colour: Black (BK), White (WT)