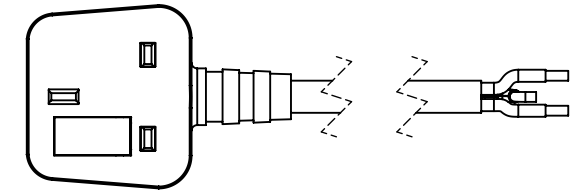
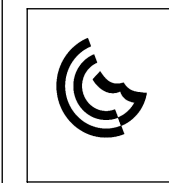


NOTE:



CABLE TYPE: 3 CORE x 1.5 x 0.5MM²
 DESCRIPTION: XIONGRUN STARTER LEAD
 BS PLUG 13 AMP
 LENGTH: 500MM UNLESS OTHERWISE STATED

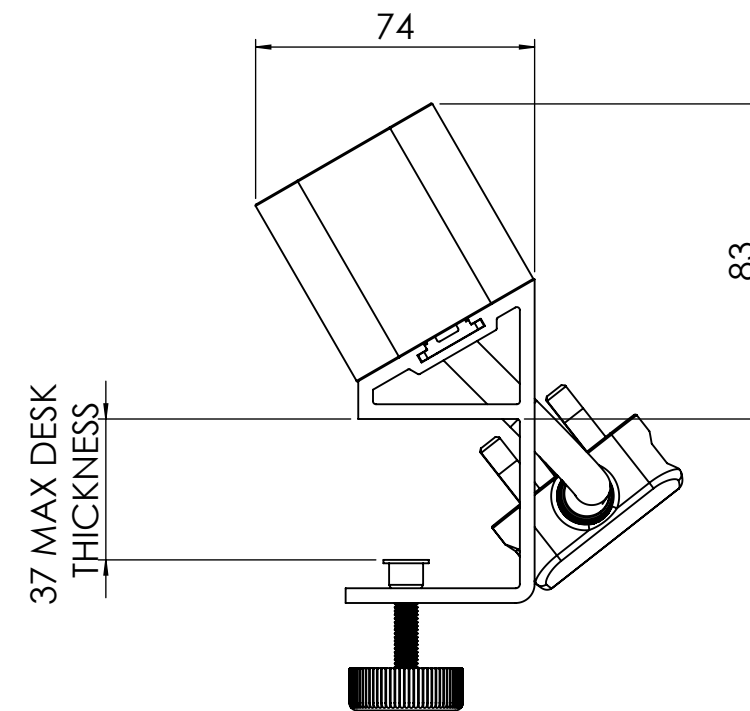
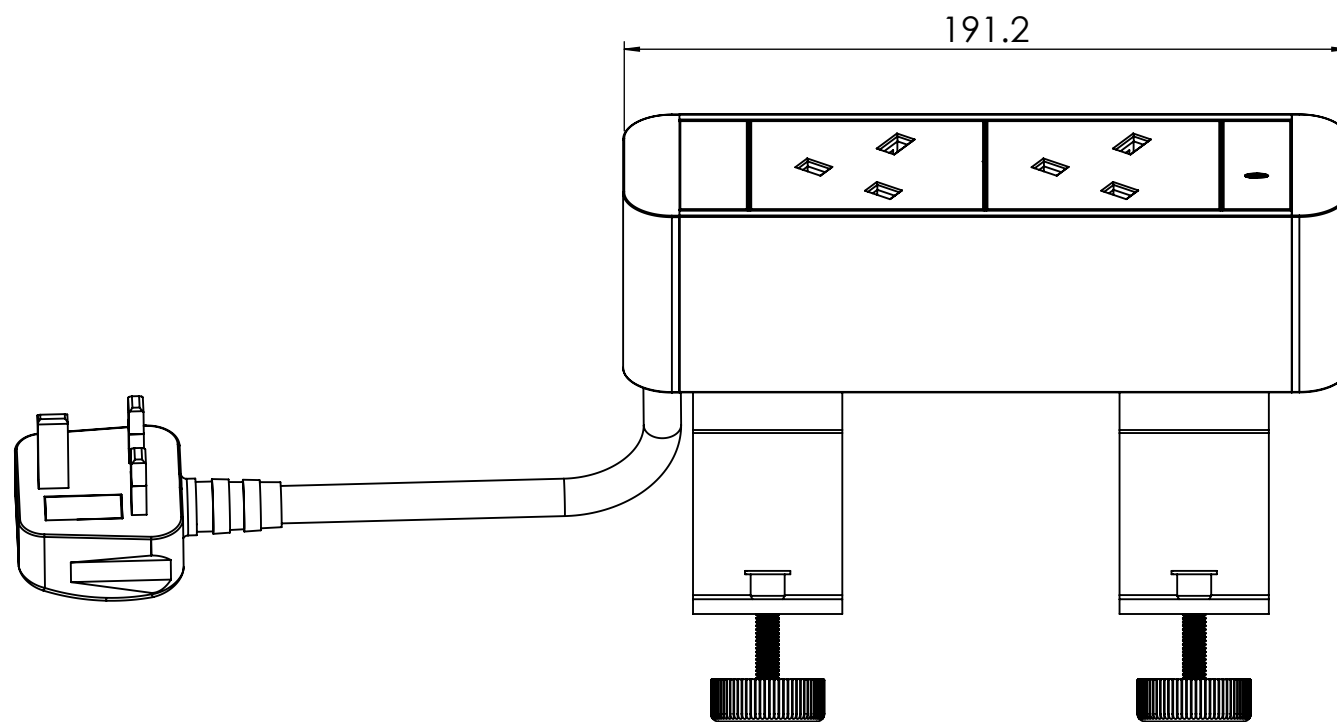
LABEL DETAIL:



CATALOGUE NUMBER:

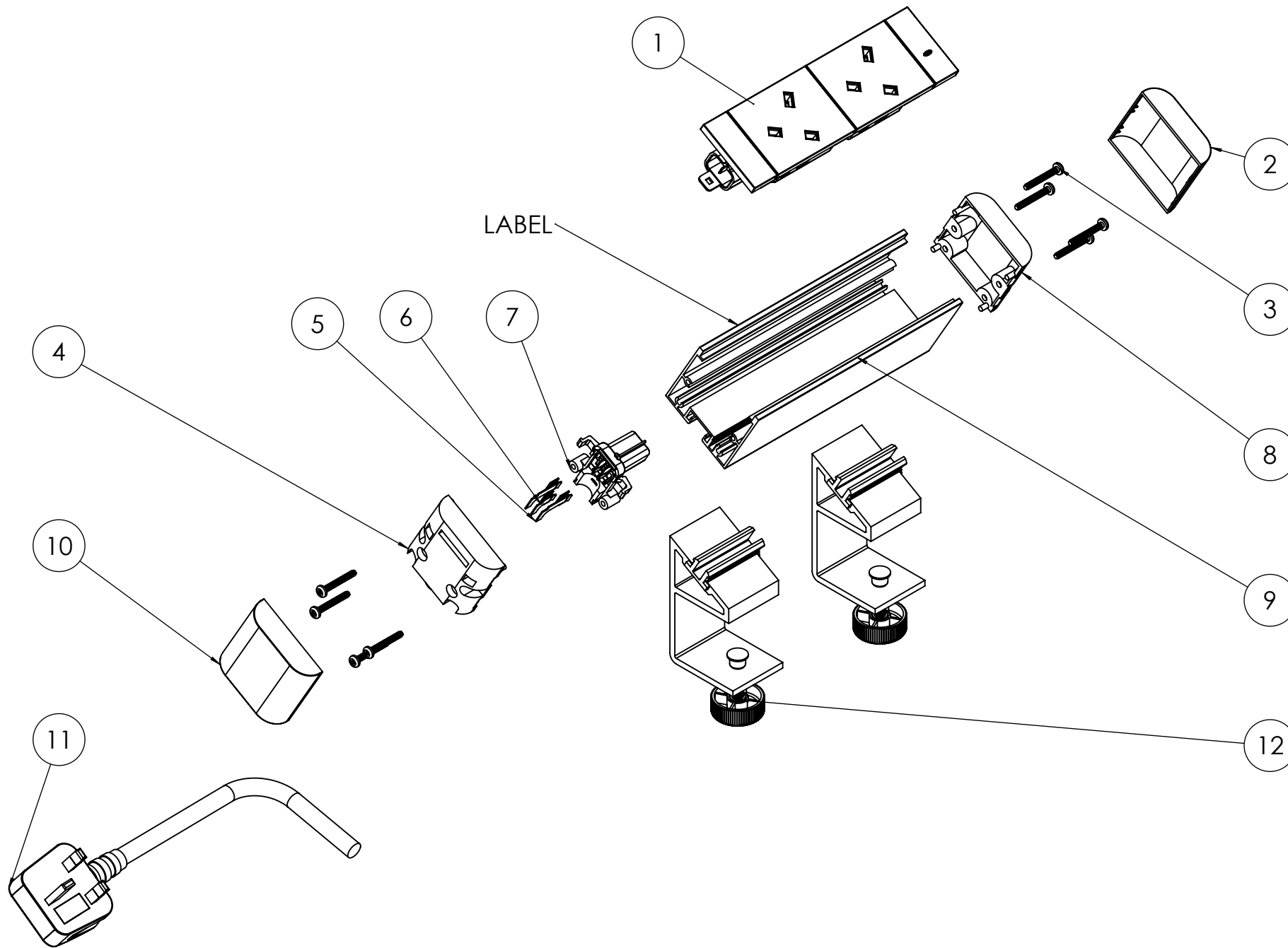


0000 000 000000

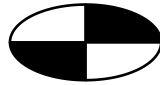
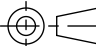


| | | | | |
|--|--|---|--|------------------|
| MATERIAL: AS PER COMPONENT DRAWING | | TOLERANCES UNLESS OTHERWISE STATED: X ±0.5 X.X ±0.2 X.XX ±0.1 X.XXX ±0.05 ANG ±0.5° | CMS Electracom COPYRIGHT © 2015 | |
| FINISH: AS PER COMPONENT DRAWING | | | TITLE: ZEUS POWER RAIL WITH UK1802 | |
| COLOUR: AS PER COMPONENT DRAWING | | | DRAWING: LU18606 | REV: 1 |
| THIS DRAWING & ASSOCIATED CAD FILES ARE ISSUED IN THE STRICTEST CONFIDENCE AND ARE ONLY TO BE USED IN THE COMMERCIAL INTERESTS OF CMS ELECTRACOM PTY LTD | | DRAWN IN mm TO AS1100 DO NOT SCALE | A3 | |
| SCALE 1:2 | | SHEET 1 OF 2 | | |

| | | | | |
|-----------|---------------------------------|------------|------|------|
| 1 | ISSUED FOR TESTING AND APPROVAL | 14/11/2016 | KP | |
| REV | DESCRIPTION | DATE | DRWN | APPV |
| REVISIONS | | | | |



| ITEM NO. | DRAWING NUMBER | DESCRIPTION | ITMS NUMBER | QTY. |
|----------|--------------------------------------|--|-------------|------|
| 1 | NK1802 | DUAL POWER MODULE | NK1802WT | 1 |
| 2 | Zeus right hand cap | Zeus right hand cap | 5055104WT | 1 |
| 3 | 6G x 1" pan head screw blind | 6G x 1" Pan Head Self Tapping Screw | 7025608 | 8 |
| 4 | Zeus Endcap Inner LHS | Zeus Endcap Inner LHS | 5055204WT | 1 |
| 5 | sc_cms25_69 Contact Spring | Spring Contact | ---- | 2 |
| 6 | sc_cms25_69 Contact Spring | Spring Contact | ---- | 1 |
| 7 | Coromal Power Connector | Coromal Power Connector (Zeus) | 5055352 | 1 |
| 8 | Zeus container cap without outlet | Zeus container cap without outlet | 5055104WT | 1 |
| 9 | 162mm | Zeus Extrusion - Cut to length - machined cable exit | 50550011 | 1 |
| 10 | Zeus left hand cap | Zeus left hand cap | 5055204WT | 1 |
| 11 | LEAD - 500MM UNLESS OTHERWISE STATED | 3 CORE x 1.5 x 0.5MM ² WITH BRITISH PLUG - 13 AMP | ---- | 1 |
| 12 | Zeus bracket complete assembly | Zeus bracket complete assembly | MDCZWT | 2 |
| 14 | LABEL | REFER TO LABEL DETAIL - STUCK TO BACK OF EXTRUSION | ---- | 1 |

| | | | | |
|---|--|---|---|--|
| MATERIAL: AS PER COMPONENT DRAWING | | TOLERANCES UNLESS OTHERWISE STATED: X ±0.5 X.X ±0.2 X.XX ±0.1 X.XXX ±0.05 ANG ±0.5° |  CMS Electracom <small>COPYRIGHT © 2015</small> | |
| FINISH: AS PER COMPONENT DRAWING | | | | |
| COLOUR: AS PER COMPONENT DRAWING | | | DRAWING: LU18606 | |
| <small>THIS DRAWING & ASSOCIATED CAD FILES ARE ISSUED IN THE STRICTEST CONFIDENCE AND ARE ONLY TO BE USED IN THE COMMERCIAL INTERESTS OF CMS ELECTRACOM PTY LTD</small> | | <small>DRAWN IN mm TO AS1100 DO NOT SCALE</small>  | A3 | |
| | | | SCALE 1:3 SHEET 2 OF 2 | |