

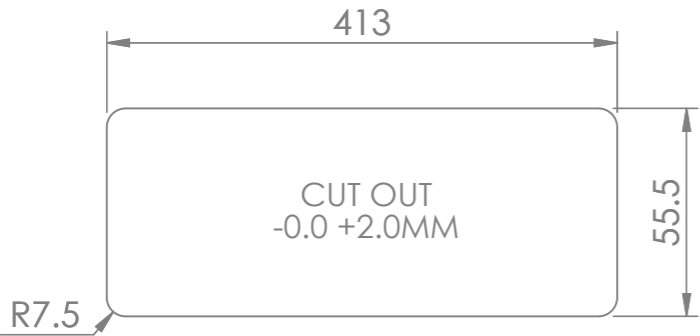
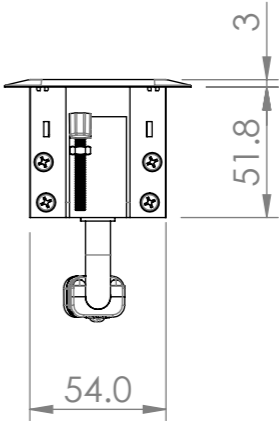
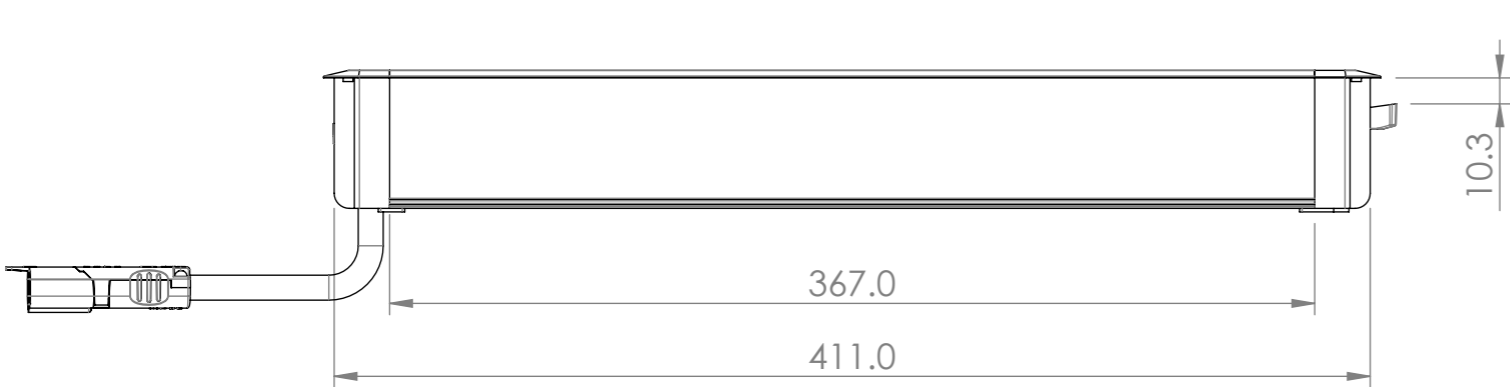
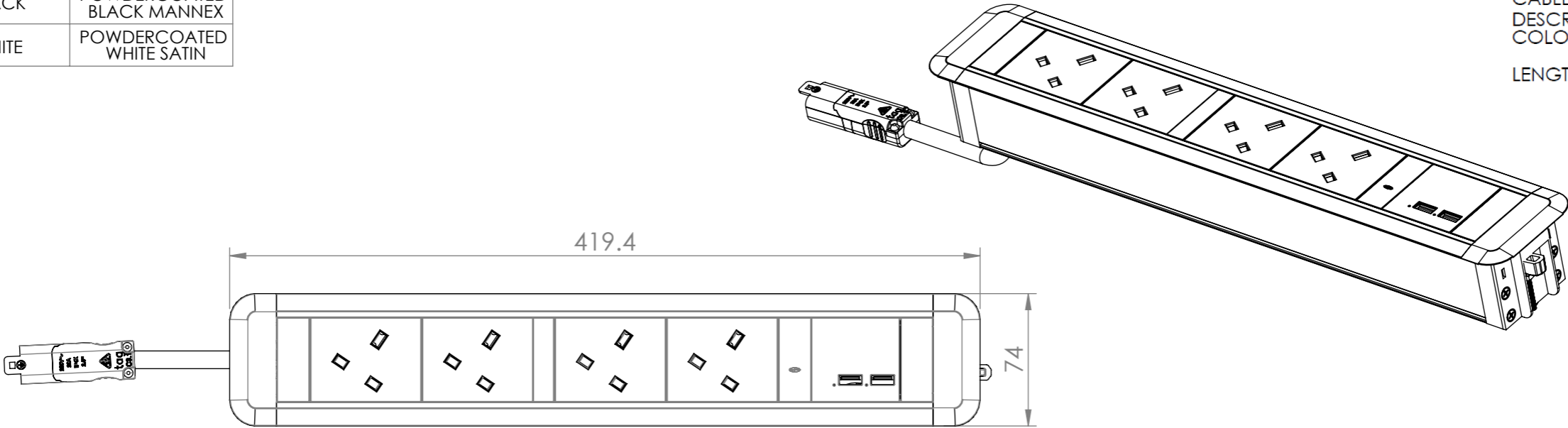
COLOUR VARIATIONS		
PART NUMBER	PLASTIC COMPONENTS	EXTRUSION
WT	WHITE	ANODISED SILVER
BK	BLACK	ANODISED SILVER
BK/BK	BLACK	POWDERCOATED BLACK MANNEX
WT/WT	WHITE	POWDERCOATED WHITE SATIN

NOTE:





CABLE TYPE: 3 CORE x 1.5mm<sup>2</sup>  
DESCRIPTION: C-CONNECTOR LEAD  
COLOUR: WHITE OR BLACK  
(REFER TO PURCHASE ORDER)

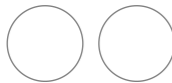
LENGTH (mm):	xx	LENGTH (mm)
	05	500
	10	1000
	15	1500
	20	2000
	25	2500
	30	3000
	35	3500
	40	4000
	45	4500
	50	5000



**PART NUMBER:** NKCE04UAA3CxxXX  
NOTE - xx - LENGTH - 05 / 10 / 15 / 20 / 25 / 30 / 35 / 40 / 45 / 50  
XX - COLOUR - WT / BK / (BK/BK) / (WT/WT)

<b>CUSTOMER SIGNATURE:</b>		<b>TOLERANCES UNLESS OTHERWISE STATED:</b>		 <b>CMS Electracom</b> <small>COPYRIGHT © 2015</small>	
<b>MATERIAL:</b> POLYCARBONATE / ALUMINIUM		X ±0.5 X.X ±0.2 X.XX ±0.1 X.XXX ±0.05 ANG ±0.5°		<b>TITLE:</b> CENTRA WITH NK1804 + NK18UAA3	
<b>FINISH:</b> FINE EDM / ANODISED (POWDER COAT)		<b>COLOUR:</b> REFER TABLE		<b>DRAWING:</b> LU41728	
THIS DRAWING & ASSOCIATED CAD FILES ARE ISSUED IN THE STRICTEST CONFIDENCE AND ARE ONLY TO BE USED IN THE COMMERCIAL INTERESTS OF CMS ELECTRACOM PTY LTD		DRAWN IN mm TO AS1100 DO NOT SCALE 		<b>REV:</b> 1	<b>A3</b>
REVISIONS		SCALE 1:3		SHEET 1 OF 2	

1	RELEASED FOR PRODUCTION	19/1/2023	JB	RG
REV	DESCRIPTION	DATE	DRWN	APPV



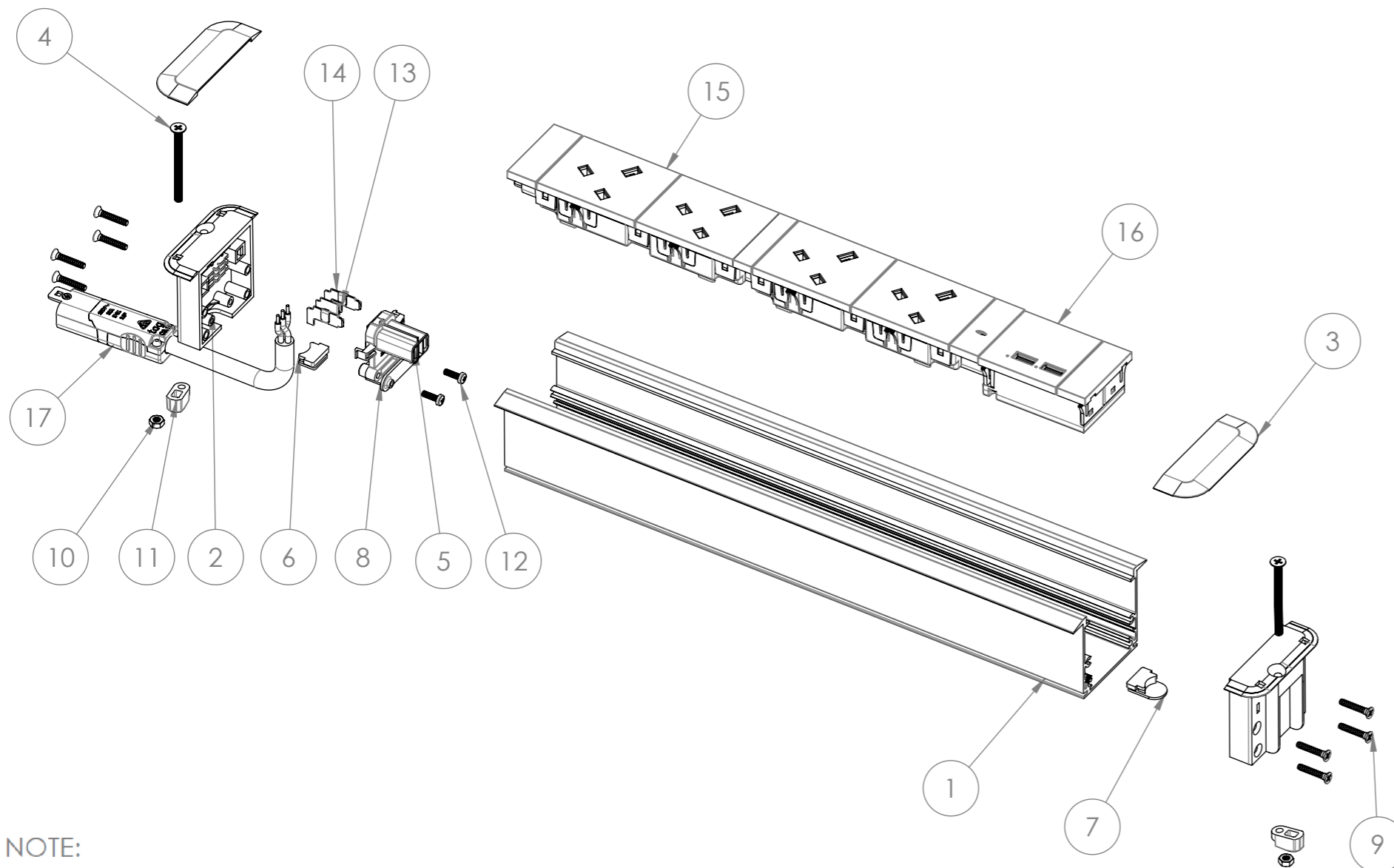
JOB NUMBER  
PART NUMBER

**CMS** Electracom  
cmselectra.com

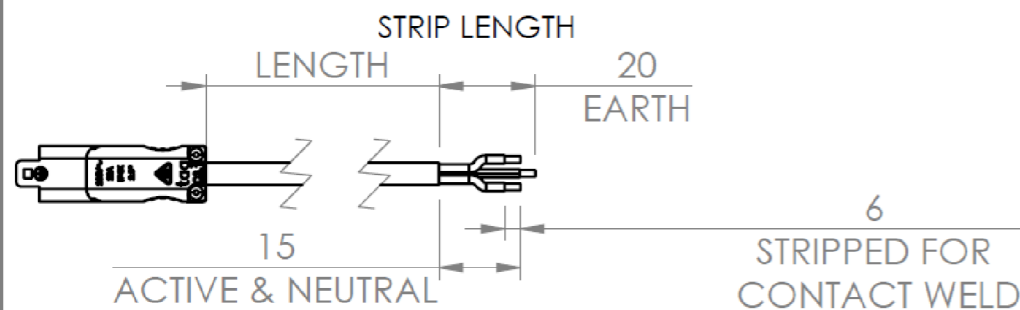
Max rated output: 13A, 250V~, 50Hz  
BS1363, SS145, MS1144

USB input (if fitted): 0.8 - 1.0A  
max output 1: 5V/3A  
max output 2: 5V/2.4A  
power supply is only suitable for IT equipment

UK CE



NOTE:



CABLE TYPE: 3 CORE x 1.5mm<sup>2</sup>  
DESCRIPTION: C CONNECTOR TO ENDCAP CONNECTOR  
LENGTH: REFER TO PURCHASE ORDER  
COLOUR: WHITE OR BLACK (REFER TO PURCHASE ORDER)

ITEM NO.	PART NUMBER	DESCRIPTION	QTY.
1	LU7626	367.0mm CENTRA EXTRUSION	1
2	LU7895	NETBOX ENDCAP	2
3	LU7896	NETBOX ENDCAP COVER	2
4	-	M4 X 50 CSK MACHINE SCREW	2
5	93948	WIRE CLAMP	1
6	LU8338	CABLE SUPPORT	1
7	LU8339	CABLE HOLE PLUG	1
8	LU16790	ZEUS COROMAL CONNECTOR	1
9	-	6G X 3/4" CSK SELF TAPPING SCREW	8
10	-	M4 HEX NUT	2
11	LU8672	KONEXUS ASM CLAMP FOOT	2
12	-	M3 X 10 PAN HEAD MACHINE SCREW	2
13	LU15229	CONTACT SPRING	1
14	LU16776	SOCKET CONTACT ASSY	2
15	LU17120	NK1804	1
16	LU20387	30W APE USB UK SQUARE EDGE CHARGER	1
17	LEAD	REFER NOTE	1

CUSTOMER SIGNATURE:
MATERIAL: POLYCARBONATE / ALUMINIUM
FINISH: FINE EDM / ANODISED (POWDER COAT)
COLOUR: REFER TABLE
THIS DRAWING & ASSOCIATED CAD FILES ARE ISSUED IN THE STRICTEST CONFIDENCE AND ARE ONLY TO BE USED IN THE COMMERCIAL INTERESTS OF CMS ELECTRACOM PTY LTD

TOLERANCES UNLESS OTHERWISE STATED:

X ±0.5  
X.X ±0.2  
X.XX ±0.1  
X.XXX ±0.05  
ANG ±0.5°

DRAWN IN mm TO AS1100 DO NOT SCALE



**CMS Electracom** COPYRIGHT © 2015

TITLE:

CENTRA WITH NK1804 + NK18UAA3

DRAWING:

LU41728

REV:

1

A3

SCALE 1:4

SHEET 2 OF 2