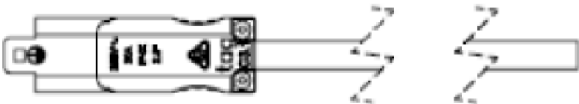


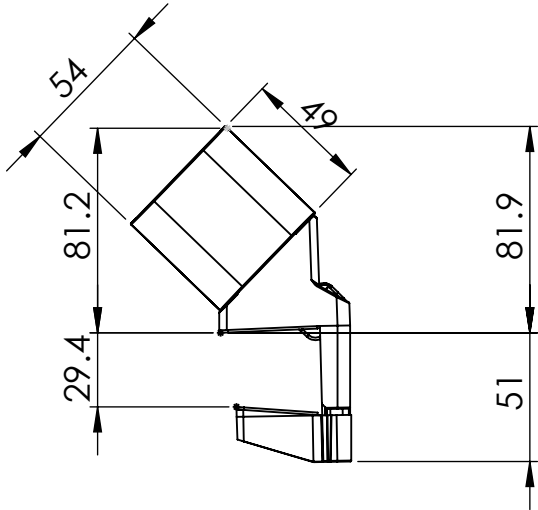
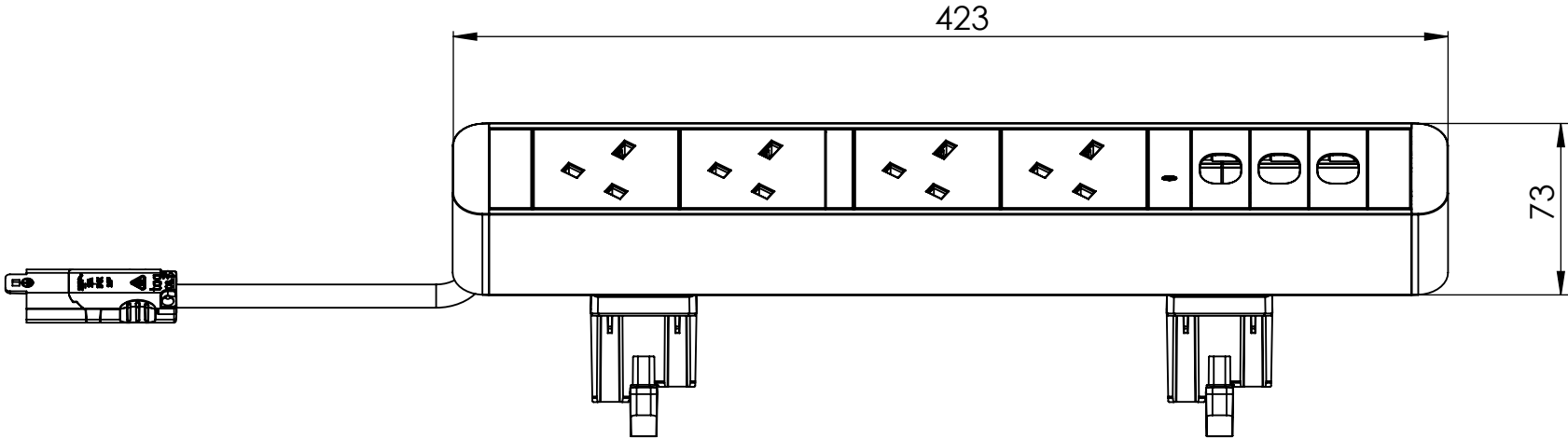
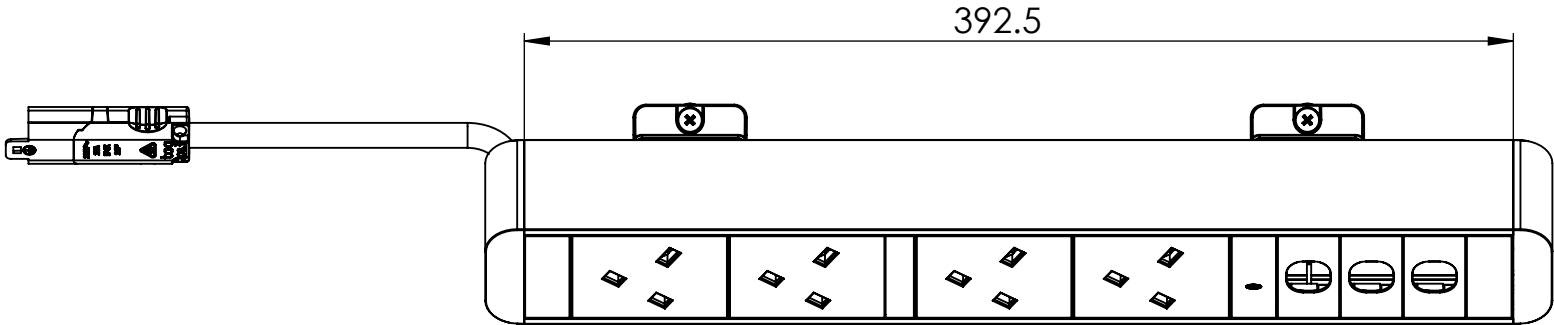
COLOUR VARIATIONS		
PART NUMBER	PLASTIC COMPONENTS	EXTRUSION
WT	WHITE	ANODISED SILVER
BK	BLACK	ANODISED SILVER
BK/BK	BLACK	POWDERCOATED BLACK MANNEX
WT/WT	WHITE	POWDERCOATED WHITE SATIN
WT/WM	WHITE	POWDERCOATED WHITE MANNEX

NOTE:




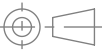
CABLE TYPE: 3 CORE x 1.5mm²
DESCRIPTION: C-CONNECTOR LEAD
COLOUR: WHITE OR BLACK
(REFER TO PURCHASE ORDER)

LENGTH (mm):	xx	LENGTH (mm)
	05	500
	10	1000
	15	1500
	20	2000
	25	2500
	30	3000
	35	3500
	40	4000
	45	4500
	50	5000



PART NUMBER: NKZN0403CxxXX
NOTE - xx - LENGTH - 05 / 10 / 15 / 20 / 25 / 30 / 35 / 40 / 45 / 50
XX - COLOUR - WT / BK / (BK/BK) / (WT/WT)

1	RELEASED FOR PRODUCTION	25/09/2023	GC	JB
REV	DESCRIPTION	DATE	DRWN	APPV
REVISIONS				

CUSTOMER SIGNATURE:		TOLERANCES UNLESS OTHERWISE STATED:		 CMS Electracom <small>COPYRIGHT © 2015</small>	
MATERIAL: POLYCARBONATE / ALUMINIUM		X ±0.5 X.X ±0.2 X.XX ±0.1 X.XXX ±0.05 ANG ±0.5°		TITLE: ZEUS 2 WITH NK1804+3 SWQ18B1	
FINISH: FINE EDM / ANODISED (POWDERCOAT)		COLOUR: REFER TO TABLE		DRAWING: LU44136	
THIS DRAWING & ASSOCIATED CAD FILES ARE ISSUED IN THE STRICTEST CONFIDENCE AND ARE ONLY TO BE USED IN THE COMMERCIAL INTERESTS OF CMS ELECTRACOM PTY LTD		DRAWN IN mm TO AS1100 DO NOT SCALE 		REV: 1	A3
		SCALE 1:3		SHEET 1 OF 2	