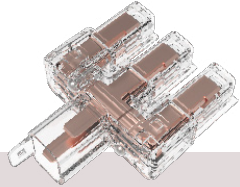


Softwiring Leads

Starter Sockets & Adaptors



C3D
1 in / 2 out



C3E
1 in / 3 out



CC84002

Leads



Interconnecting Lead



British Starter Lead



US Starter Lead



Schuko Starter Lead



Indian Starter Lead

Product Details

Adapters & Interconnecting Leads

CC84002**	"C" Series Universal Starter
C3D**	Double Adaptor 1 In 2 Out
C3E**	Triple Adaptor 1 In 3 Out
C1502**	200mm 16A Interconnecting Lead
C1505**	500mm 16A Interconnecting Lead
C1510**	1000mm 16A Interconnecting Lead
C1515**	1500mm 16A Interconnecting Lead
C1520**	2000mm 16A Interconnecting Lead
C1525**	2500mm 16A Interconnecting Lead
C1530**	3000mm 16A Interconnecting Lead
C1540**	4000mm 16A Interconnecting Lead

Starter Leads

CG55120**	2000mm Starter lead (13A plug)
CG55125**	2500mm Starter lead (13A plug)
CG55130**	3000mm Starter lead (13A plug)
CG55140**	4000mm Starter lead (13A plug)
CG55150**	5000mm Starter lead (13A plug)

Please note:

British 13A Plug (CG at beginning of part code)

- The same as ordinary duty cables except they are terminated with a female socket 'CMS' AS/NZ61535.1 connector at one end and a 13amp UK 3 Pin Male Plug

US Type B (CB at beginning of part code)

- The same as ordinary duty cables except they are terminated with a female socket 'CMS' AS/NZ61535.1 connector at one end and a 13amp UK 3 Pin Male Plug
- Comes with Thermal Overload

Schuko Type F (CF at beginning of part code)

- Can be supplied with Thermal Overload

Indian Type D (CD at beginning of part code)