

C SERIES

Caravan Power, Data & AV



Power Sockets



C16.1WT
Switched GPO - single - softwired



C17.1 + USB AA**
Single switch 10A GPO with 2x
USB A outlets – 4A shared



C17.1 + USB A/C**
Single switch 10A GPO with 1x
USB A/C outlets – 4A shared



C17.2C**
C17 series Dual 10A switched GPO



C17.2WT
Switched GPO - dual - softwired

Outlets & Inlets



COL10**
External Socket Outlet



CIL15**
External Socket Inlet



MILCB
Single 15A autoswitch inlet plug
with RCD switch – IP 44



RVCASE
RCD Enclosure IP44



RVCB
RCD Switch with Enclosure IP44



CILCB
Single 15A autoswitch inlet plug
with RCD switch – IP 44



CTV
TV Outlet



JTVA
TV Inlet

Provision Switch Plates



CSA0BG
Architrave switch - blank



C1CSA1
Architrave switch - single



CSA2**
Architrave switch - Dual



CSW1**
Switch plate - single



CSW2**
Switch plate - dual



CSW3**
Switch plate - triple



CSW4**
Switch plate - quad



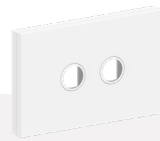
CSW0**
Switch plate - blank



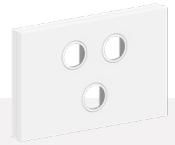
C17SW0**
C series blank wall plate



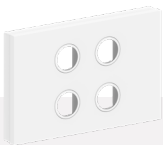
C17SW1**
C series single provision wall plate



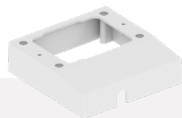
C17SW2**
EC series double provision wall platelet



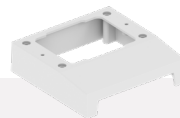
C17SW3**
C series triple provision wall plate



C17SW4**
C series quad provision wall plate



CMB-M**
Mounting block with small cut out



CMB-P**
Mounting Block/Spacer suit GPO wall plate (Punched)

Hardwired Power Outlets



C16H.1WT
Single 10A, GPO switched
hardwired



C16H.2WT
Double 10A, GPO switched
hardwired

Leads & MISC



C25WT**
3m, 3.6m, 4.2m, 4.8m Leads ROHS



C3R**
Right Angle Connector



C3D**
1 in / 2 out



C3E**
1 in / 3 out



iC10
Switch 10amp, 250volt
with looping terminal



iC10A
Switch 10amp, 250volt
with 2 way looping terminal

Product Details

Power Sockets

C16.1**	Switched GPO - single - softwired
C17.1 + USB AA	Single switch 10A GPO with 2x USB A outlets – 4A shared (12V DC supply)
C17.1 + USB A/C	Single switch 10A GPO with 1x USB A and 1x USB C outlets – 4A shared (12V DC supply)
C17.2C	C17 series Dual 10A switched GPO
C17.2	Switched GPO - dual - softwired

Outlets & Power

COL10	External Socket Outlet
CIL15	External Socket Inlet
MILCB	Single 15A autoswitch inlet plug with RCD switch – IP 44
RVCASE	RCD Enclosure IP44
RVCB	RCD Switch with Enclosure IP44
CILCB	Single 15A autoswitch inlet plug with RCD switch – IP 44
CTV**	TV Outlet
JTVA**	TV Inlet

Provision Switch Plate

CSA0**	Architrave switch - blank
CSA1**	Architrave switch - single
CSA2**	Architrave switch - Dual
CSW1**	Switch plate - single
CSW2**	Switch plate - dual
CSW3**	Switch plate - triple
CSW4**	Switch plate - quad
CSW0**	Switch plate - blank
C17SW1	C series single provision wall plate
C17SW2	C series double provision wall plate
C17SW3	C series triple provision wall plate
C17SW4	C series quad provision wall plate
CMB-M	Mounting block with small cut out
CMB-P	Mounting Block/Spacer suit GPO wall plate (Punched)

Product Details

Hardwired Power Outlets

C16H.1WT	Single 10amp GPO switched - hardwired
C16H.2WT	Double 10amp GPO switched - hardwired

Leads & MISC

C3D**	1 in / 2 out
C3R	Right Angle Connector
C3E	1 in / 3 out
iC10	Switch 10amp, 250volt with looping terminal - with indicator (not to be used as a 2 way switch)
iC10A	Switch 10amp, 250volt 2 way with looping terminal - without indicator
CC06E**	600mm Lead ROHS
CC12E**	1200mm Lead ROHS
CC24E**	2400mm Lead ROHS
CC30E**	3000mm Lead ROHS
CC36E**	3600mm Lead ROHS
CC42E**	4200mm Lead ROHS
CC48E**	4800mm Lead ROHS