

<b>CUSTOMER SIGNATURE:</b>
<b>MATERIAL:</b> P.C / ALUMINIUM
<b>FINISH:</b> TEXTURED / ANODISED
<b>COLOUR:</b> WHITE / SILVER

**TOLERANCES UNLESS OTHERWISE STATED:**

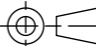
X ±0.5  
 X.X ±0.2  
 X.XX ±0.1  
 X.XXX ±0.05  
 ANG ±0.5°

 **CMS Electracom** COPYRIGHT © 2015

**TITLE:**  
CERC0202

<b>DRAWING:</b> LU9204	<b>REV:</b> 1	<b>A3</b>
---------------------------	------------------	-----------

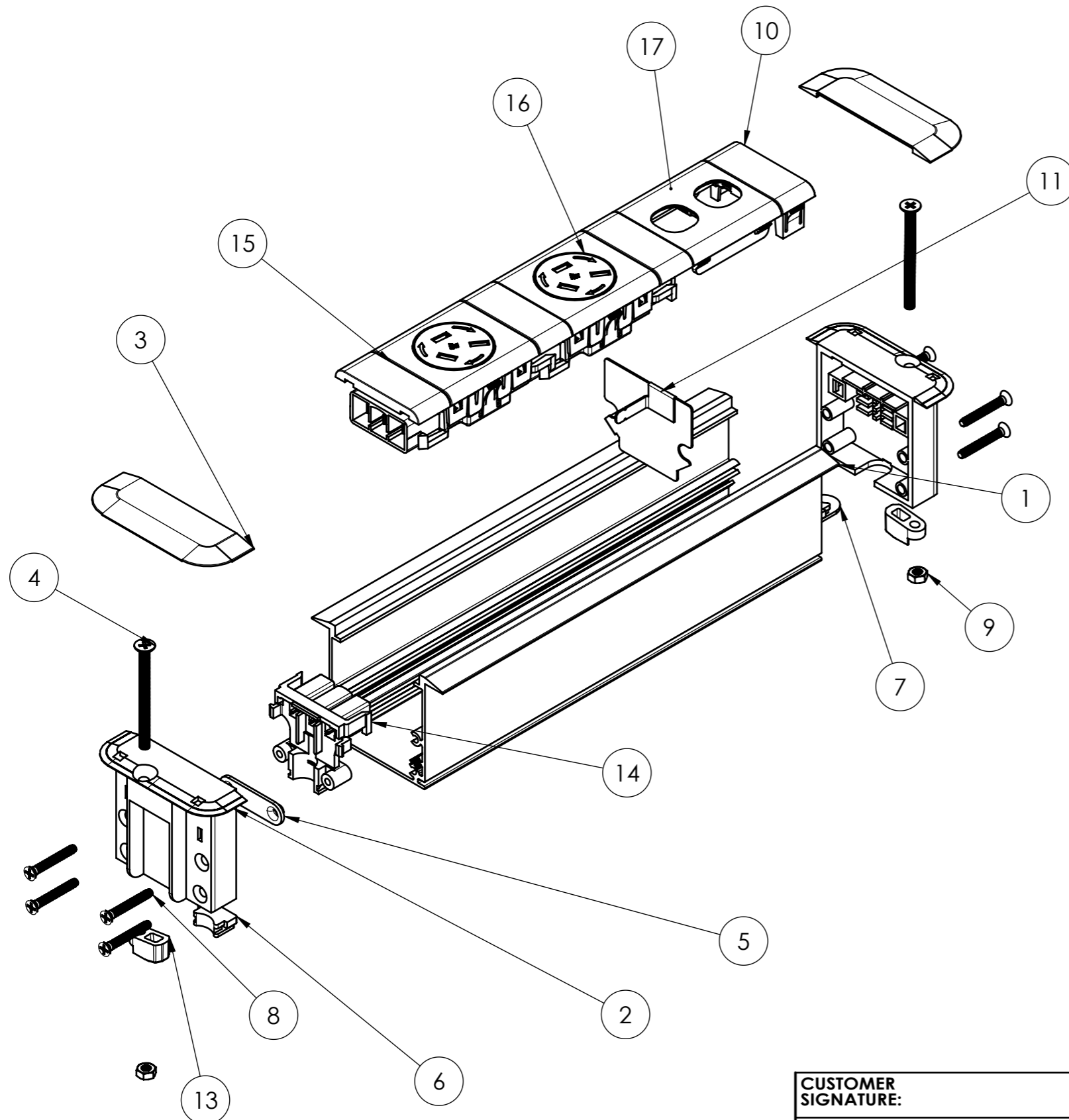
THIS DRAWING & ASSOCIATED CAD FILES ARE ISSUED IN THE STRICTEST CONFIDENCE AND ARE ONLY TO BE USED IN THE COMMERCIAL INTERESTS OF CMS ELECTRACOM PTY LTD

DRAWN IN mm TO AS1100 DO NOT SCALE 

SCALE 1:2

SHEET 1 OF 2

1	RELEASED	10/11/2016	JC	
REV	DESCRIPTION	DATE	DRWN	APPV
	REVISIONS			



ITEM NO.	PART NUMBER	QTY.
1	224mm Inline extrusion.	1
2	LU7895	2
3	LU7896	2
4	M4 x 50 CSK Machine Screw	2
5	93948 WIRE CLAMP	1
6	LU8338	1
7	LU8339	1
8	6G x 1" CSK screw blind	8
9	M4 hex nut	2
10	SW18A-WT	1
11	LU13019	1
12	M4 x 6 pan head machine screw	1
13	LU8672 Konexus ASM clamp foot	2
14	Zeus SW18 Connector	1
15	NW18RC01	1
16	NW18RCS01	1
17	SW18C-2WT	1

**CUSTOMER SIGNATURE:**

**MATERIAL:**  
P.C / ALUMINIUM

**FINISH:**  
TEXTURED / ANODISED

**COLOUR:**  
WHITE / SILVER

THIS DRAWING & ASSOCIATED CAD FILES ARE ISSUED IN THE STRICTEST CONFIDENCE AND ARE ONLY TO BE USED IN THE COMMERCIAL INTERESTS OF CMS ELECTRACOM PTY LTD

**TOLERANCES UNLESS OTHERWISE STATED:**

X ±0.5  
 X.X ±0.2  
 X.XX ±0.1  
 X.XXX ±0.05  
 ANG ±0.5°



**CMS Electracom** COPYRIGHT © 2015

**TITLE:**  
CERC0202

**DRAWING:** LU9204 **REV:** 1 **A3**

SCALE 1:2

SHEET 2 OF 2

DRAWN IN mm TO AS1100 DO NOT SCALE

