

| REVISION HISTORY |          | UNLESS OTHERWISE SPECIFIED:<br>DIMENSIONS ARE IN MILLIMETERS |  | DO NOT SCALE DRAWING   |  | REVISION   |  |
|------------------|----------|--|--|--|--|--|--|
| N.               | DATE     | MODIFICATIONS  |  | TOLERANCES   |  | 3  |  |
| 1                | 13/03/11 | ISSUED FOR MANUFACTURING                                     |  | 0.00 ± 0.02 ANGULAR ± 0.5°   |  |  |  |
| 2                | 15/03/11 | MODIFIED PLATES  |  | 0.0 ± 0.1  |  |  |  |
| 3                | 27/07/11 | MODIFIED UNDERCARRIAGE                                       |  | 0 ± 0.5  |  |  |  |
| 4                |          |  |  | DEBUR AND BREAK SHARP EDGES  |  |  |  |
| 5                |          |  |  | THE MATERIAL CONTAINED HEREIN IS THE SOLE PROPERTY OF CMS ELECTRA.COM. ANY UNAUTHORIZED REPRODUCTIONS, MODIFICATIONS AND / OR DISTRIBUTION IS STRICTLY PROHIBITED. |  | TITLE:<br>CMS floor box 60mm large assembly          |  |
| 6                |          |  |  | NAME   |  | DATE   |  |
| 7                |          |  |  | LUCKY  |  | 27/07/11   |  |
| 8                |          |  |  | MATERIAL:  |  | X  |  |
| 9                |          |  |  | FINISH:  |  | X  |  |
| 10               |          |  |  | FILE ON SHARED\CAD:  |  | H:\Melbourne\CAD\Other drawings\Production\Floor box |  |
| 11               |          |  |  | FILE ON NAS:   |  | Z:\Work files\Floor boxes\CMS Floorbox\60mm\Large    |  |
| 12               |          |  |  | DWG NO.  |  | LU-1727  |  |
| 13               |          |  |  | PART NO.   |  | TBC  |  |
|                  |          |  |  | SCALE  |  | 1:2  |  |
|                  |          |  |  | SHEET  |  | 1 OF 2   |  |
|                  |          |  |  |  |  | A3   |  |



CMS floor box 60mm large assembly

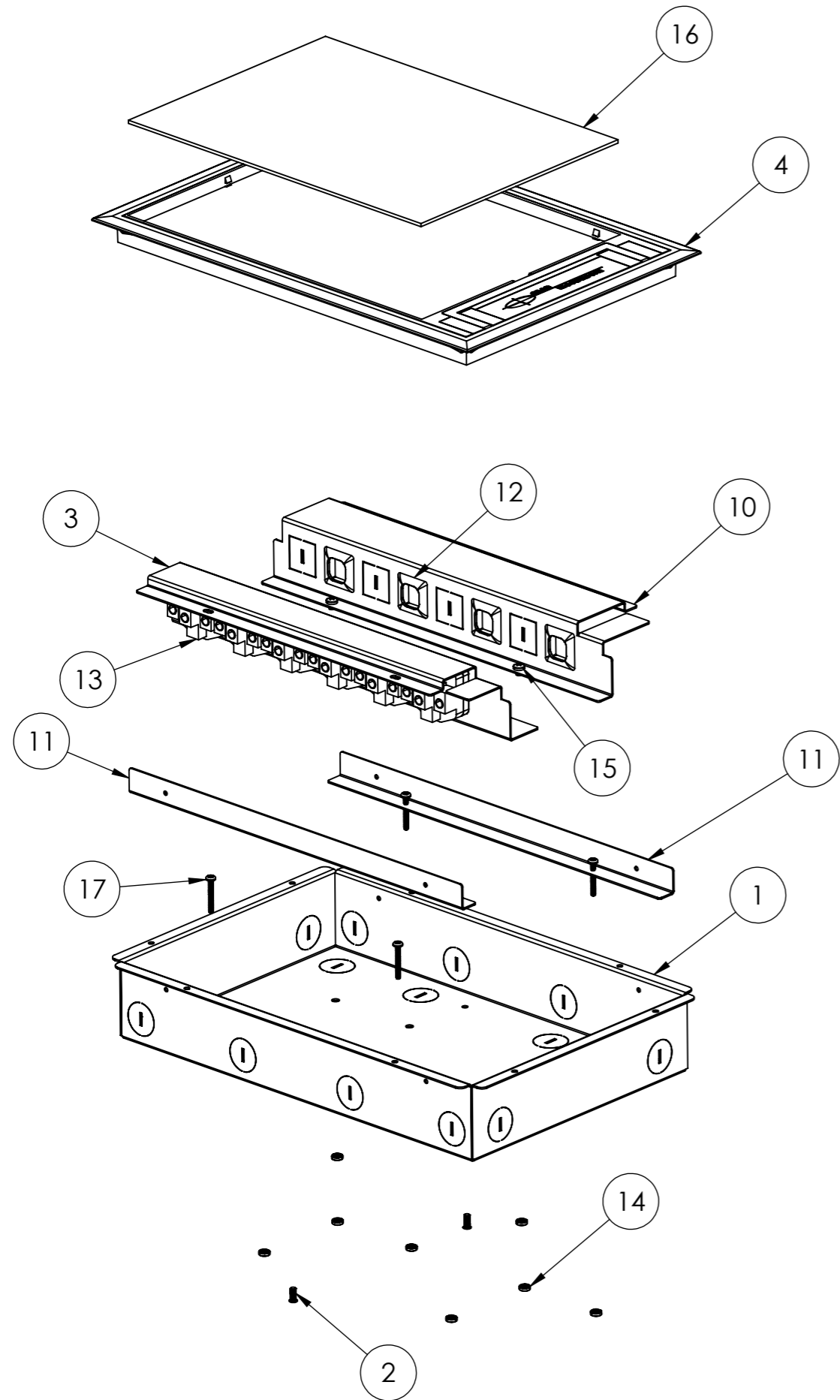
DWG NO. LU-1727

PART NO. TBC


SCALE 1:2

SHEET 1 OF 2

A3



| ITEM NO. | PART NUMBER  | QTY. |
|----------|--|------|
| 1        | LU1709_V2_CMS floor box 60mm large undercarriage                 | 1    |
| 2        | PEM 4 x 10 flush head threaded stud                              | 2    |
| 3        | LU1710_V2_CMS floor box 60mm large undercarriage plate           | 1    |
| 4        | CMS large floor box lid  | 1    |
| 10       | LU1711_V2_CMS floor box 60mm large undercarriage plate mirror    | 1    |
| 11       | LU1712_V1_CMS floor box 60mm large undercarriage support bracket | 2    |
| 12       | BEZBK  | 4    |
| 13       | 10a round GPO black  | 6    |
| 14       | PEM M4 clinch nut  | 8    |
| 15       | M4 x 6 pan head machine screw                                    | 4    |
| 16       | LU1345_V1_Large gal insert                                       | 1    |
| 17       | 6G x 1" pan head machine screw                                   | 4    |

| REVISION HISTORY |          | UNLESS OTHERWISE SPECIFIED:<br>DIMENSIONS ARE IN MILLIMETERS |  | DO NOT SCALE DRAWING  |  | REVISION 3  |  |
|------------------|----------|--|--|---|--|---|--|
| N.               | DATE     | MODIFICATIONS  |  | TOLERANCES  |  | TITLE:  |  |
| 1                | 13/03/11 | ISSUED FOR MANUFACTURING                                     |  | 0.00 ± 0.02 ANGULAR ± 0.5°  |  | <br><b>CMS floor box 60mm large assembly</b> |  |
| 2                | 15/03/11 | MODIFIED PLATES  |  | 0.0 ± 0.1   |  |   |  |
| 3                | 27/07/11 | MODIFIED UNDERCARRIAGE                                       |  | 0 ± 0.5   |  | DWG NO. LU-1727   |  |
| 4                |          |  |  | DEBUR AND BREAK SHARP EDGES   |  | PART NO. TBC  |  |
| 5                |          |  |  | THE MATERIAL CONTAINED HEREIN IS THE SOLE PROPERTY OF CMS ELECTRACOM. ANY UNAUTHORIZED REPRODUCTIONS, MODIFICATIONS AND / OR DISTRIBUTION IS STRICTLY PROHIBITED. |  | SCALE N/A SHEET 2 OF 2  |  |
| 6                |          |  |  | NAME DATE   |  | A3  |  |
| 7                |          |  |  | LUCKY 27/07/11  |  |   |  |
| 8                |          |  |  | MATERIAL: X   |  |   |  |
| 9                |          |  |  | FINISH: X   |  |   |  |
| 10               |          |  |  | FILE ON SHARED\CAD:   |  |   |  |
| 11               |          |  |  | H:\Melbourne\CAD\Other drawings\Production\Floor box  |  |   |  |
| 12               |          |  |  | FILE ON NAS:  |  |   |  |
| 13               |          |  |  | Z:\Work files\Floor boxes\CMS Floorbox\60mm\Large   |  |   |  |