

# SW17 Series

## Softwired GPO

The SW17 series is a 10amp auto switched power module that offers significant installation benefits as no tools are required for thin or thick panel mounting.

The installation efficiency of this product offers excellent labour savings.

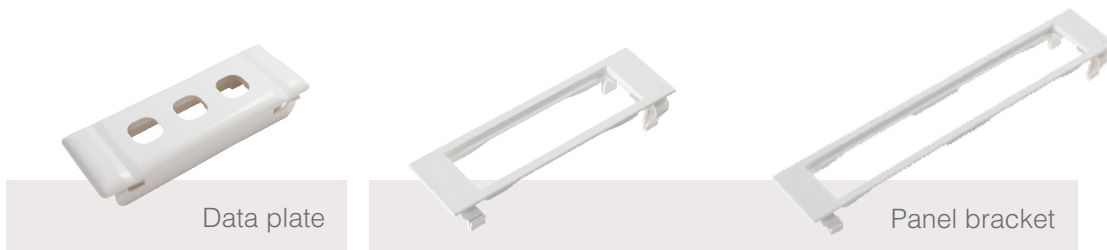
## Auto Switched



SW1702  
Dual GPO

SW1704  
Quad GPO

## Data & Panel Brackets



DB1703A  
Data & communications

FM2A  
Thick panel bracket (2-12mm)

FM4A  
Thick panel bracket (2-12mm)

## Colours Available

● Black ○ White ● Silver ● Red

More colour options available on request (minimum order quantity applies)

## Key Features

- » No tools required to install in duct or panel mount.
- » Slim and compact socket outlet design (only 18.5mm from under face plate)
- » Integral soft wiring connectors complete with moulded latches.
- » Mounting options include: thin panel (up to 2mm thick), thick panel (greater than 2mm thick), dinrail mounting, duct mounting or free standing.
- » Module will snap directly into panel cut-out up to 2mm thick.

## Product Details

### Auto Switched GPO

<b>SW1702**</b>	Dual auto switched power module Cut out size: 130.5 x 41.5mm
<b>SW1712**</b>	Dual auto switched power module mounted in thick panel bracket Cut out size: 190.5 x 55.5mm
<b>SW1704**</b>	Quad auto switched power module Cut out size: 230.5mm x 41.5mm
<b>SW1714**</b>	Quad auto switched power module mounted in thick panel bracket Cut out size: 290.5 x 55.5mm

### Data Plate

<b>DB1703A**</b>	Triple data plate to suit thin panel mounting up to 2mm thick includes 2 x blanking plugs (Krone/Clipsal data bezel) Cut out size: 130.5 x 41.5mm
------------------	---

### Thick Panel Bracket

<b>FM2A#</b>	Thick panel bracket for SW1702 power module 2-12mm
<b>FM4A#</b>	Thick panel bracket for SW1702 power module 2-12mm