

# Totem

## Power Poles

This stylish new round Totem pole is a simple cable protection solution specifically designed for bringing power and data cables from the floor, ceiling or the workstation. The Totem by CMS includes an access floor mounting kit and a dividing plate creating two compartments to retain segregation between services.



### Colour / Finish

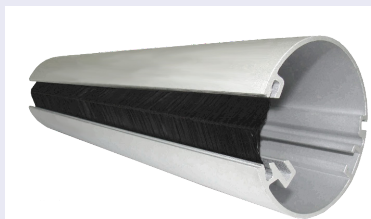
- Natural Anodised Silver
- Powder-Coated White
- Powder-Coated Black

### Key Features

- » Unique profile
- » Available in 4 lengths 670mm, 2.1m, 2.8m and 3.3m
- » Floor and desk mounting kit included
- » Segregation plate included
- » Stylish anodised finish
- » Available with access door or brush strips.



Access door

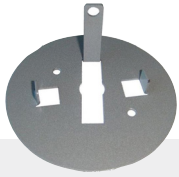


Brush strip



Segregation plate

## Components



**SPTFB**  
Floor mounting bracket



**AXC**  
Ceiling flange



**AXCD**  
In-Desk Flange



**SPTDB**  
Under desk mounting bracket



**SPLID02**  
Precut cover - 200mm



**SPTB28**  
Bush strip - 2.8m

## Product Details

### Pre Configured Kits

<b>SPT06**</b>	<ul style="list-style-type: none"> <li>1 x Power Pole - 670mm</li> <li>1 x Floor mounting bracket</li> <li>1 x Desk mounting bracket</li> <li>1 x Cover</li> </ul>
<b>SPT21**</b>	<ul style="list-style-type: none"> <li>1 x Desk to ceiling Power Pole - 2.1m</li> <li>1 x Ceiling kit</li> <li>1 x Under desk mounting bracket</li> <li>1 x Desk grommet</li> <li>1 x Cover</li> </ul>
<b>SPT28**</b>	<ul style="list-style-type: none"> <li>1 x Power Pole - 2.8m</li> <li>1 x Ceiling kit</li> <li>1 x Floor bracket</li> <li>1 x Cover</li> </ul>
<b>SPT33**</b>	<ul style="list-style-type: none"> <li>1 x Power Pole - 3.3m</li> <li>1 x Ceiling kit</li> <li>1 x Floor bracket</li> <li>1 x Cover</li> </ul>

### Components

<b>SPTFB</b>	Floor mounting bracket
<b>AXC</b>	Ceiling flange
<b>AXCD</b>	Floor access grommet
<b>SPTDB</b>	Under desk mounting bracket
<b>SPTLID02</b>	Pre cut cover - 200mm
<b>SPTB28</b>	Brush strip - 2.8m

#### NOTE:

\*\* Denotes standard colour finishes Anodised Silver (AN), Powder-coated White (WT), Powder-coated Black (BK)

Disclaimer: CMS has made every attempt to ensure the accuracy and reliability of the information provided in this document are correct. All information contained in this document is to be used for general guidance only. CMS reserves the right to change, delete or modify the information without notice.

© CMS Electracom 2023