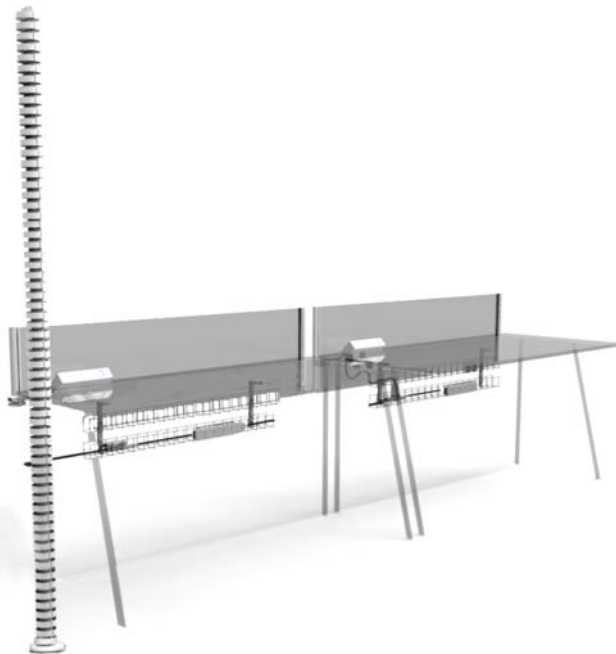


# CIRQLON

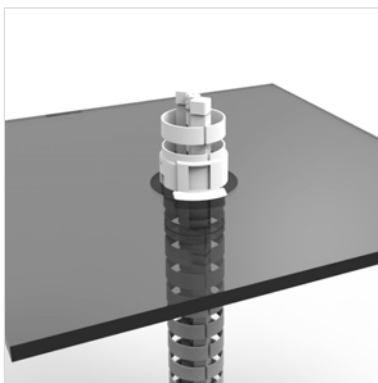
## Rigid Cable Umbilical



*Cirqlon cross-section section showing aluminium rigid extrusion (CNRK3)*

### ALIGNMENT CONSISTENCY FROM THE CEILING

Cirqlon Rigid series delivers the ability to run straight-line cable distribution from the ceiling to the floor or desk. Cirqlon features twin aluminium extrusions through the centre of the umbilical, together with snap-locking components to secure rigidity.



*Cirqlon shown with ceiling flange (CNC) and top-cap (CNTCWT)*

### PRODUCT FEATURES

- Increased rigidity with dual structural extrusion throughout the umbilical.
- 2 compartment design for power & data segregation.
- Suits fit-outs where ceiling multiple cable drops are required.
- Ceiling to Floor kit has all the necessary components required.
- Available in White, Black and Clear to blend discretely into any fit-out.

### ORDERING INFORMATION

PART NO.	DESCRIPTION
CNFC1*R/#	Cirqlon 3000mm long, complete with Ceiling flange (CNC), Top Cap (CNTCCL), 4pcs aluminium rigid extrusion (CNRK3), round disk base with fixing base plate (CNG)

**PLEASE CALL US FOR THE MOST UP TO DATE SPECIFICATIONS AND PRICING**

#### Notes:

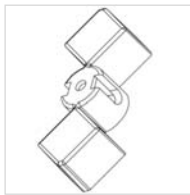
- \*Denotes umbilical colour BK (black), WT (white), CL (clear).
- #Denotes base colour BK (black), WT (white), CL (clear).

# CIRQLON

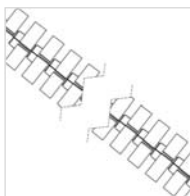
## Component List



ORDERING INFORMATION	
PART NO.	DESCRIPTION
CNCWT	Cirqlon Ceiling Flange - 80mm



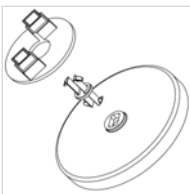
ORDERING INFORMATION	
PART NO.	DESCRIPTION
CNTCCL	Cirqlon Top Cover.



ORDERING INFORMATION	
PART NO.	DESCRIPTION
CN60**	Cirqlon 605mm section



ORDERING INFORMATION	
PART NO.	DESCRIPTION
CNRK3	Cirqlon 10mm Aluminium Square Rod Kit, 3000mm length. (2 x 2010mm, 2 x 1010mm)
CNR2	Single aluminium rigid extrusion—2000mm
CNR1	Single aluminium rigid extrusion—1000mm



ORDERING INFORMATION	
PART NO.	DESCRIPTION
CNG**	Umbilical round disk floor base with fixing base plate and top cap (CNTCCL)

*Notes:*

- \*Denotes umbilical colour BK (black), WT (white), CL (clear),
- #Denotes base colour; WT (white), BK (black), SL (silver)