

C SERIES

Caravan Power, Data & AV



Power Sockets



C16.1WT
Switched GPO - single - softwired



C17.1 + USB AA**
Single switch 10A GPO with 2x
USB A outlets – 4A shared



C17.1 + USB A/C**
Single switch 10A GPO with 1x
USB A/C outlets – 4A shared



C17.2C**
C17 series Dual 10A switched GPO



C17.2WT
Switched GPO - dual - softwired

Outlets & Inlets



COL10**
External Socket Outlet



CIL15**
External Socket Inlet



RVCB
RCD Switch with Enclosure IP44



RVCASE
RCD Enclosure IP44



CILCB
Single 15A autoswitch inlet plug
with RCD switch – IP 44



CTV
TV Outlet



JTVA
TV Inlet

Provision Switch Plates



CSA0BG
Architrave switch - blank



C1CSA1
Architrave switch - single



CSA2**
Architrave switch - Dual



CSW1**
Switch plate - single



CSW2**
Switch plate - dual



CSW3**
Switch plate - triple



CSW4**
Switch plate - quad



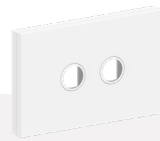
CSW0**
Switch plate - blank



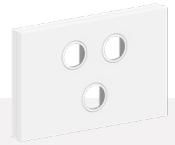
C17SW0**
C series blank wall plate



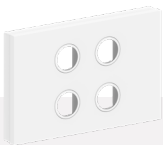
C17SW1**
C series single provision wall plate



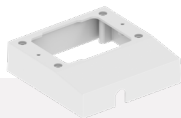
C17SW2**
EC series double provision wall platelet



C17SW3**
C series triple provision wall plate



C17SW4**
C series quad provision wall plate



CMB-M**
Mounting block with small cut out



CMB-P**
Mounting Block/Spacer suit GPO wall plate (Punched)

Hardwired Power Outlets



C16H.1WT
Single 10A, GPO switched
hardwired



C16H.2WT
Double 10A, GPO switched
hardwired

Leads & MISC



C25WT**
3m, 3.6m, 4.2m, 4.8m Leads ROHS



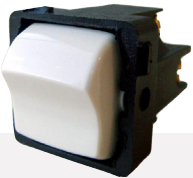
C3R**
Right Angle Connector



C3D**
1 in / 2 out



C3E**
1 in / 3 out



iC10
Switch 10amp, 250volt
with looping terminal



iC10A
Switch 10amp, 250volt
with 2 way looping terminal

Product Details

Power Sockets

| | |
|------------------------|--|
| C16.1** | Switched GPO - single - softwired |
| C17.1 + USB AA | Single switch 10A GPO with 2x USB A outlets – 4A shared (12V DC supply) |
| C17.1 + USB A/C | Single switch 10A GPO with 1x USBA and 1x USBC outlets – 4A shared (12V DC supply) |
| C17.2C | C17 series Dual 10A switched GPO |
| C17.2 | Switched GPO - dual - softwired |

Outlets & Power

| | |
|---------------|--|
| COL10 | External Socket Outlet |
| CIL15 | External Socket Inlet |
| RVCASE | RCD Enclosure IP44 |
| RVCB | RCD Switch with Enclosure IP44 |
| CILCB | Single 15A autoswitch inlet plug with RCD switch – IP 44 |
| CTV** | TV Outlet |
| JTVA** | TV Inlet |

Provision Switch Plate

| | |
|---------------|---|
| CSA0** | Architrave switch - blank |
| CSA1** | Architrave switch - single |
| CSA2** | Architrave switch - Dual |
| CSW1** | Switch plate - single |
| CSW2** | Switch plate - dual |
| CSW3** | Switch plate - triple |
| CSW4** | Switch plate - quad |
| CSW0** | Switch plate - blank |
| C17SW1 | C series single provision wall plate |
| C17SW2 | C series double provision wall plate |
| C17SW3 | C series triple provision wall plate |
| C17SW4 | C series quad provision wall plate |
| CMB-M | Mounting block with small cut out |
| CMB-P | Mounting Block/Spacer suit GPO wall plate (Punched) |

Product Details

Hardwired Power Outlets

| | |
|-----------------|---------------------------------------|
| C16H.1WT | Single 10amp GPO switched - hardwired |
| C16H.2WT | Double 10amp GPO switched - hardwired |

Leads & MISC

| | |
|----------------|---|
| C3D** | 1 in / 2 out |
| C3R | Right Angle Connector |
| C3E | 1 in / 3 out |
| iC10 | Switch 10amp, 250volt with looping terminal - with indicator (not to be used as a 2 way switch) |
| iC10A | Switch 10amp, 250volt 2 way with looping terminal - without indicator |
| CC06E** | 600mm Lead ROHS |
| CC12E** | 1200mm Lead ROHS |
| CC24E** | 2400mm Lead ROHS |
| CC30E** | 3000mm Lead ROHS |
| CC36E** | 3600mm Lead ROHS |
| CC42E** | 4200mm Lead ROHS |
| CC48E** | 4800mm Lead ROHS |