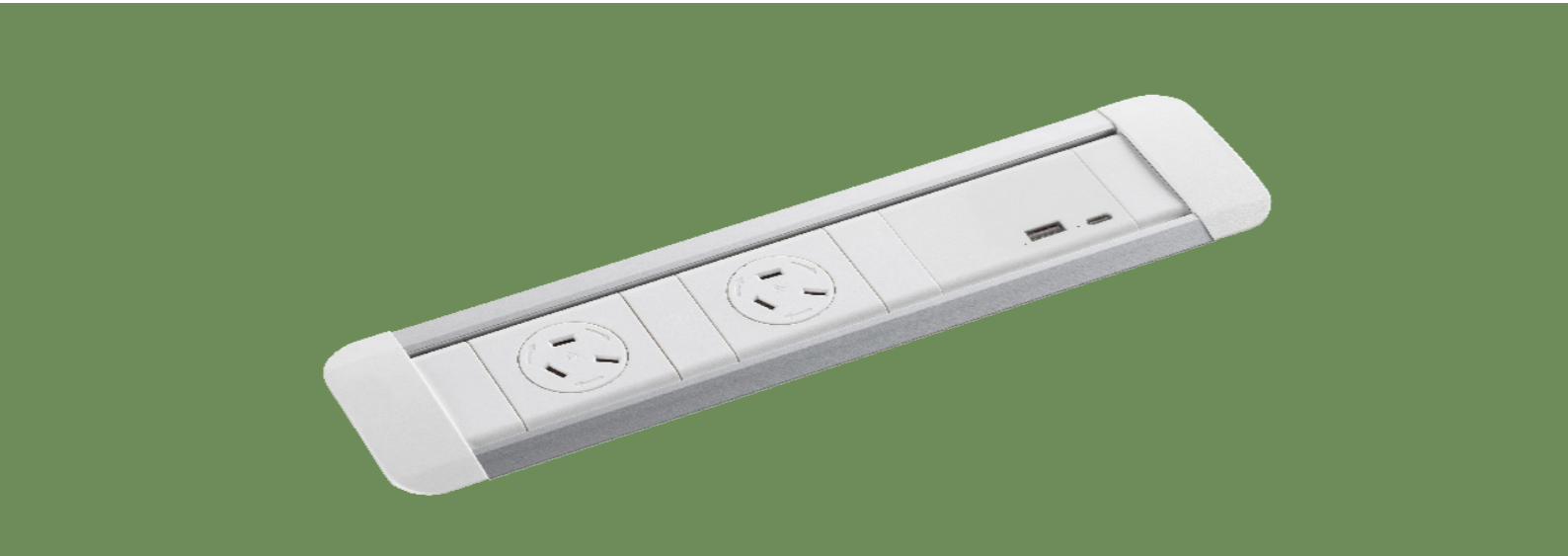


CENTRA

In-Desk Module





CENTRA

In Desk Module

CMS Centra Series in-desk module effectively incorporates power, fast-charge USB/transfer, data and AV into any flat desktop or vertical surface.

Centra Series modular design allows any configuration of services, making it an ideal solution for workstations, meeting and conference tables, collaborative and public spaces, as well as vertical surfaces including screens, walls or soft furniture.

Colours Available

● Black ○ White

Key Features

- » Innovative rotating outlet covers recess cleanly on the table surface.
- » Quick and easy to install.
- » Auto-clamping paddles enable easy top-side installation.

Configures with:



GPO
Auto Switched Power Module



USB Charging
USB Inline Charging Modules



Data
Thin Panel Mounting Data Plates

Product Details

CERC020210D**	Centra in-desk unit c/w 2x GPO with rotating cover, 2 x Data Provision - 1000mm TAG Lead, L3D Splitter
CERC02U10D**	Centra in-desk unit c/w 2x GPO with rotating cover, 1x USB A/A (30W) - 1000mm TAG Lead, L3D Splitter
CERC02UAC10D**	Centra in-desk unit c/w 2x GPO with rotating cover, 1x USB A/C (30W) - 1000mm TAG Lead, L3D Splitter
CERC02UAC6510D**	Centra in-desk unit c/w 2x GPO with rotating cover, 1x USB A/C (65W) - 1000mm TAG Lead, L3D Splitter
CERC040210D**	Centra in-desk unit c/w 4x GPO with rotating cover, 2x Data Provision, 1000mm TAG Lead
CERC04U10D**	Centra in-desk unit c/w Quad GPO with rotating cover & 1x USB A/A (30W), 1000mm Tag Plug Lead, L3D Splitter
CERC04UAC10D**	Centra in-desk unit c/w Quad GPO with rotating cover & 1x USB A/C (30W), 1000mm Tag Plug Lead, L3D Splitter
CERC04UAC6510D**	Centra in-desk unit c/w Quad GPO with rotating cover & 1x USB A/C (65W), 1000mm Tag Plug Lead, L3D Splitter

Notes:

- Denotes Standard Colours: Black (BK), White (WT)
- The rotated cover GPO must be used when the product is installed into flat surfaces.
- For use with IT equipment only.
- Use of cleaning agents: Please ensure cleaning agents are compatible for use on moulded polycarbonate surfaces. Should any sign of degradation, cracking or discolouration be present or occur, immediately discontinue the use of the cleaning agent.

Disclaimer: CMS has made every attempt to ensure the accuracy and reliability of the information provided in this document are correct. All information contained in this document is to be used for general guidance only. CMS reserves the right to change, delete or modify the information without notice. .
© CMS Electracom 2023