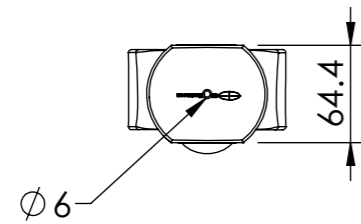
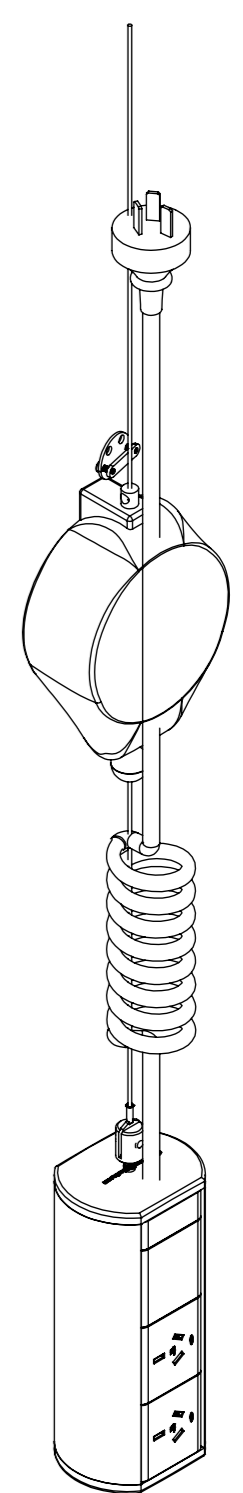
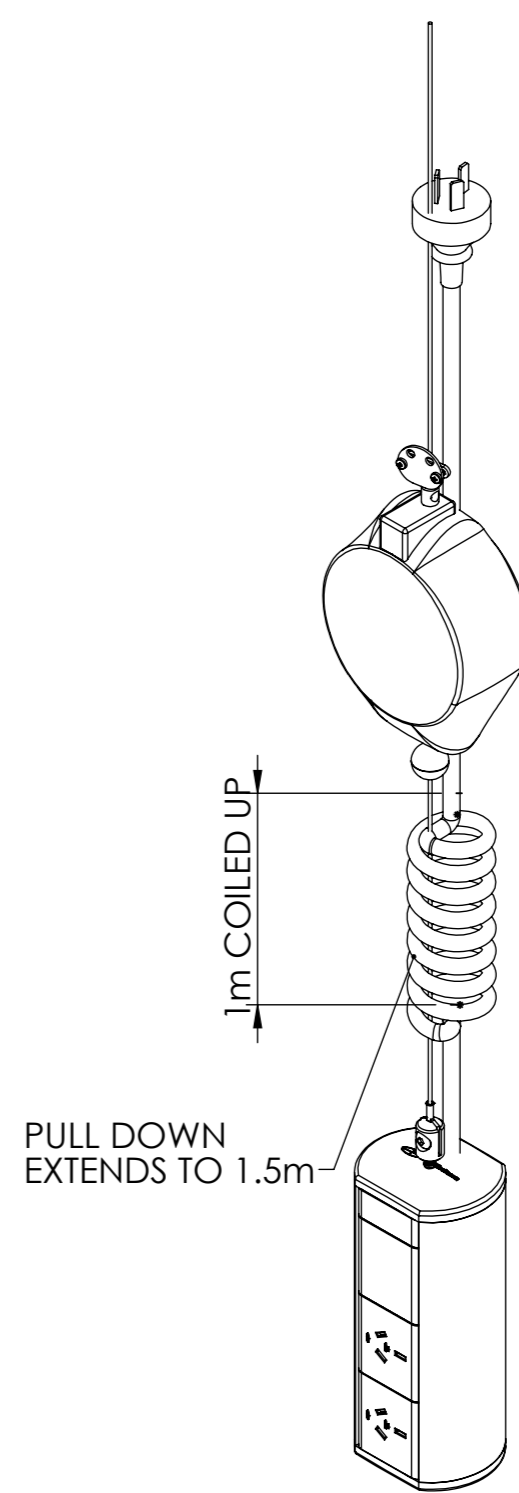
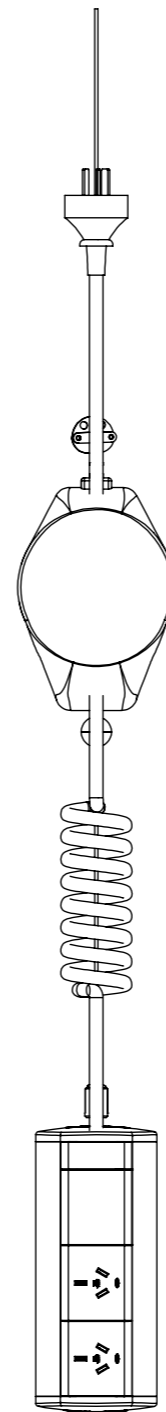
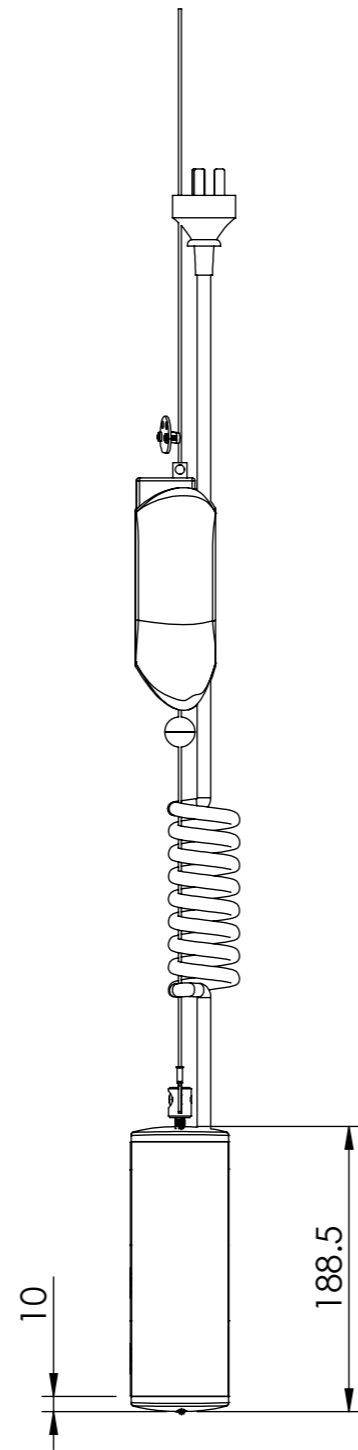
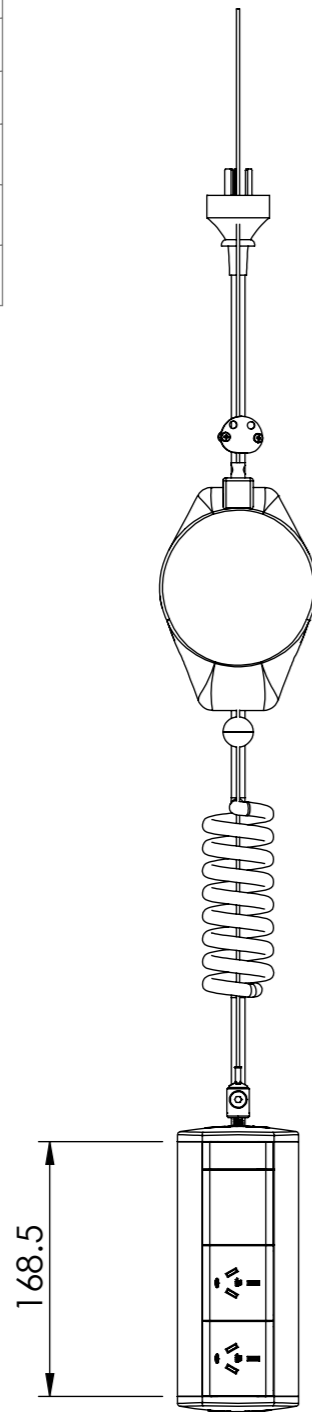


COLOUR VARIATIONS		
PART NUMBER	PLASTIC COMPONENT	EXTRUSION
WT	WHITE	ANODISED SILVER
BK	BLACK	ANODISED SILVER
BK/BK	BLACK	POWDERCOATED BLACK MANNEX
WT/WT	WHITE	POWDERCOATED WHITE SATIN
WT/WM	WHITE	POWDERCOATED WHITE MANNEX



**PART NUMBER:** ELM04lxxXX

NOTE - xx - LENGTH - 05 / 10 / 15 / 20 / 25 / 30 / 35 / 40 / 45 / 50  
 XX - COLOUR - WT / BK / (BK/BK) / (WT/WT) / (WT/WM)

REV	DESCRIPTION	DATE	DRWN	APPV
7	UPDATED RETRACTOR SYSTEM	25/11/2025	SP	AP
6	UPDATED BOM WITH PART CODES	27/03/2024	GC	AP
5	ADDED 18mm TILE/CHANGED STRAIN RELIEF	22/01/2024	GC	AP
4	UPDATED CABLE STRAIN MECHANISM	5/10/2023	GC	AP
3	UPDATED BOM	26/09/2023	GC	AP
2	ADDED STRIP LENGTHS/INTERCONNECT GPOS WITH 1mm CABLE	27/06/2023	GC	AP
1	RELEASED FOR SALES NOT FOR PRODUCTION	20/06/2023	GC	AP
REVISIONS				

<b>CUSTOMER SIGNATURE:</b>	<b>TOLERANCES UNLESS OTHERWISE STATED:</b>
<b>MATERIAL:</b> POLYCARBONATE / ALUMINIUM	X ±0.5 X.X ±0.2 X.XX ±0.1 X.XXX ±0.05 ANG ±0.5°
<b>FINISH:</b> FINE EDM / ANODISED (POWDER COAT)	
<b>COLOUR:</b> REFER TABLE	
THIS DRAWING & ASSOCIATED CAD FILES ARE ISSUED IN THE STRICTEST CONFIDENCE AND ARE ONLY TO BE USED IN THE COMMERCIAL INTERESTS OF CMS ELECTRACOM PTY LTD	

<b>DRAWING:</b> LU43408	<b>REV:</b> 7	<b>A3</b>
SCALE 1:10	SHEET 1 OF 3	



**TITLE:** POWER POLE WITH CURLY CORD RETRACTOR+4 GPO

DRAWN IN mm TO AS1100 DO NOT SCALE