

C SERIES

Caravan Power, Data & AV



Hardwired Power Outlets



C16H.1WT
Single 10A, GPO switched
hardwired



C16H.2WT
Double 10A, GPO switched
hardwired

Provision Switch Plates



CSA0
Architrave switch - blank



C1CSA1
Architrave switch - single



CSA2
Architrave switch - Dual



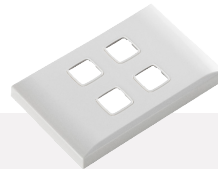
CSW1
Switch plate - single



CSW2
Switch plate - dual



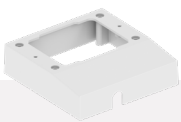
CSW3
Switch plate - triple



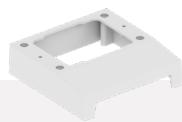
CSW4
Switch plate - quad



CSW0
Switch plate - blank



CMB-M
Mounting block with small cut out



CMB-P
Mounting Block/Spacer suit GPO
wall plate (Punched)

Outlets & Power



COL10
External Socket Outlet



CIL15
External Socket Inlet



MILCB
Single 15A autoswitch inlet plug
with RCD switch – IP 44



RVCASE
RCD Enclosure IP44



RVCB
RCD Switch with Enclosure IP44



CILCB
Single 15A autoswitch inlet plug
with RCD switch – IP 44



C16.1
Switched GPO - single - softwired



C17.1 + USB AA
Single switch 10A GPO with 2x
USB A outlets – 4A shared



C17.1 + USB A/C
Single switch 10A GPO with 1x
USB A/C outlets – 4A shared



C17.2J
C17 series Dual 10A switched GPO
with J coupler



C17.2C
C17 series Dual 10A switched GPO



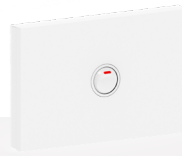
C17.2M
C17 series Dual 10A switched GPO
with M coupler



C17.2
Switched GPO - dual - softwired



C17SW0
C series blank wall plate



C17SW1
C series single provision wall plate



C17SW2
EC series double provision wall
plate



C17SW3
C series triple provision wall plate



C17SW4
C series quad provision wall plate

AV & TV Outlets



CTV
TV Outlet



JTVA
TV Inlet

ROHS Leads & MISC



CC30E / CC36E /
CC42E / CC48E
3m, 3.6m, 4.2m, 4.8m Leads ROHS



CC06E / CC12E / CC24E
600mm, 1.2m & 2.4m Leads ROHS



C3R
Right Angle Connector



C3D
1 in / 2 out



C3E
1 in / 3 out



iC10
Switch 10amp, 250volt
with looping terminal



iC10A
Switch 10amp, 250volt
with 2 way looping terminal

Product Details

Data Connectors & Mounting Block

C16H.1WT	Single 10amp GPO switched - hardwired
C16H.2WT	Double 10amp GPO switched - hardwired

Provison Switch Plate

CSA0**	Architrave switch - blank
CSA1**	Architrave switch - single
CSA2**	Architrave switch - Dual
CSW1**	Switch plate - single
CSW2**	Switch plate - dual
CSW3**	Switch plate - triple
CSW4**	Switch plate - quad
CSW0**	Switch plate - blank
CMB-M	Mounting block with small cut out
CMB-P	Mounting Block/Spacer suit GPO wall plate (Punched)

Outlets & Power

COL10	External Socket Outlet
CIL15	External Socket Inlet
MILCB	Single 15A autoswitch inlet plug with RCD switch – IP 44
RVCASE	RCD Enclosure IP44
RVCB	RCD Switch with Enclosure IP44
CILCB	Single 15A autoswitch inlet plug with RCD switch – IP 44
J17M	
C16.1**	Switched GPO - single - softwired
C17.1 + USB AA	Single switch 10A GPO with 2x USB A outlets – 4A shared (12V DC supply)
C17.1 + USB A/C	Single switch 10A GPO with 1x USBA and 1x USBC outlets – 4A shared (12V DC supply)
C17.2J	C17 series Dual 10A switched GPO with J coupler
C17.2C	C17 series Dual 10A switched GPO
C17.2M	C17 series Dual 10A switched GPO with M coupler
C17.2	Switched GPO - dual - softwired
C17SW0	C series blank wall plate
C17SW1	C series single provision wall plate
C17SW2	C series double provision wall plate
C17SW3	C series triple provision wall plate
C17SW4	C series quad provision wall plate

Product Details

AV & TV Outlets

CTV**	TV Outlet
JTVA**	TV Inlet

ROHS Leads & MISC

C3D**	1 in / 2 out
C3R	Right Angle Connector
C3E	1 in / 3 out
iC10	Switch 10amp, 250volt with looping terminal - with indicator (not to be used as a 2 way switch)
iC10A	Switch 10amp, 250volt 2 way with looping terminal - without indicator
CC06E**	600mm Lead ROHS
CC12E**	1200mm Lead ROHS
CC24E**	2400mm Lead ROHS
CC30E**	3000mm Lead ROHS
CC36E**	3600mm Lead ROHS
CC42E**	4200mm Lead ROHS
CC48E**	4800mm Lead ROHS