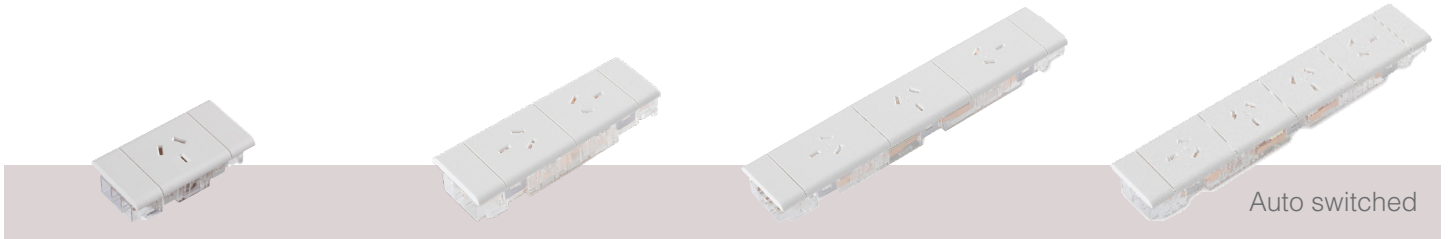


# NW18 Series - Detachable Fascia

## Softwired GPO

The NW18 series GPO represents the next generation in softwiring, allowing both designers and installers to benefit from its intuitive and practical design. Developed for the designer the unique NW Series GPO features a detachable faceplate which empowers designers to create endless combinations of fascia colour and design to suit any application Ideal for the installer.



### NW1801

Single auto switched power module

### NW1802

Dual rotated auto switched power module

### NW1803R

Triple rotated auto switched power module

### NW1804R

Quad rotated auto switched power module



Round earth

### NW1801A

Single auto switched power module with round earth-pin fascia

## Colours Available

Black
  White
  Silver
  Red

More colour options available on request (minimum order quantity applies)

## Key Features

- » The detachable fascia and revised GPO body also offers added flexibility to installers.
- » Rear clip-in access for pre-configured and cable duct/tray in-screen installations.
- » Concealed screw-mount holes for surface-mount applications.

## Product Details

### Auto switched GPO

<b>NW1801</b>	Single auto switched power module Cut out size: 81 x 41.5mm
<b>NW18S01</b>	Single auto switched power module with short facia Cut out size: 81 x 41.5mm
<b>NW1802R</b>	Dual rotated auto switched power module Cut out size: 130.5mm x 41.5mm
<b>NW1803R</b>	Triple rotated auto switched power module Cut out size: 230.5 x 41.5mm
<b>NW1804R</b>	Quad rotated auto switched power module Cut out size: 230.5mm x 41.5mm

### Round earth GPO

<b>NW1801A</b>	Single auto switched round Earth Pin power module Cut out size: 81mm x 41.5mm
<b>NW1802RA</b>	Dual rotated auto switched round Earth Pin power module Cut out size: 130.5mm x 41.5mm
<b>NW1803RA</b>	Triple rotated auto switched round Earth Pin power module Cut out size: 230.5 x 41.5mm
<b>NW1804RA</b>	Quad rotated auto switched round Earth Pin power module Cut out size: 230.5mm x 41.5mm



#### **Customised options available**

For more information please contact your CMS sales representative