

Mini 3

Softwired Cabling System



QUICK FLEX



Quick Flex Mini 3

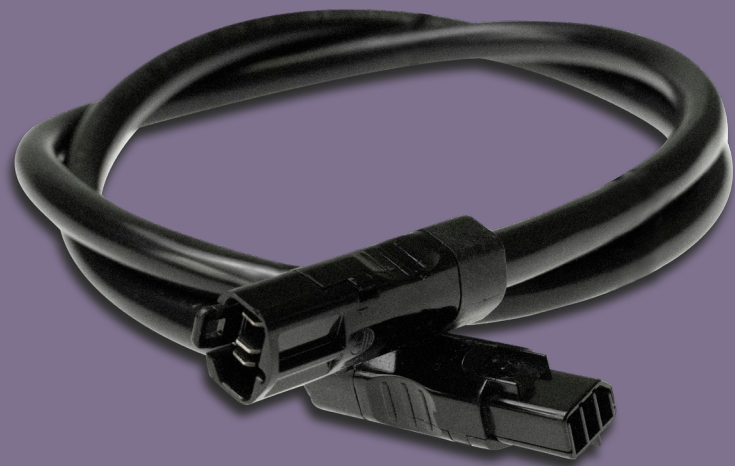
A New Frontier in Softwiring

CMS Quick Flex Mini 3 series is the culmination of industry-leading expertise in developing application-specific softwiring systems for the commercial sector.

The benefits of softwiring structured cabling have led it to become industry standard within commercial, residential and healthcare buildings, from lighting to workstation cluster cabling, both of which CMS has been at the forefront. By using CMS Mini 3 connectors, labour costs, on-site faults and excess material wastes are eliminated.

The Quick Flex Mini 3 extends its connections all the way back to the switchboard meaning all key terminations are done within the control of the switchboard manufacturer, eliminating the cost and time of terminations completed on-site by the electrician.

Uniquely, Mini 3 addresses all electrical facets of the building, from Power, Lighting and Switching, all softwired from the switchboard. Mini 3's connector footprint fits within 25mm conduit, making it our most compact structured cabling solution to date.



Mini 3 Features

End to end solution

Designed from the switchboard out, Mini 3 is a single softwired solution from the switchboard, wall-outlet, lighting and switching.

Fit for purpose

Mini 3 works on-site as you assume it would, it's minimal connector footprint is developed to fit easily within 25mm conduit.

Unrivalled support

Place your project in the best possible hands with our world-class sales, engineering and production teams backed by the widest support and distribution network.

Connect with confidence

Mini 3 softwiring features unique keyways and coloured connectors to prevent connection errors between power, lighting and switching circuits.



Why Choose CMS

Our Mission

is to enhance our clients experience ensuring all interactions within our products and services at CMS provide:

- » Confidence
- » Improved productivity
- » Convenience
- » A memorable experience

Our Vision

Commitment

Our clients are our most important asset. As a team we are dedicated to providing well crafted products made with passion.

Innovation

We are passionate about innovative design and pride ourselves at being the forefront of technology and creating value for our clients to pass onto the end user.

Growth

As a market leader with over 40 years of experience in power solutions our commitment is to collaboratively work with our clients to achieve mutually beneficial outcomes.



The CMS Turnkey Solution

Our 5 Easy Steps

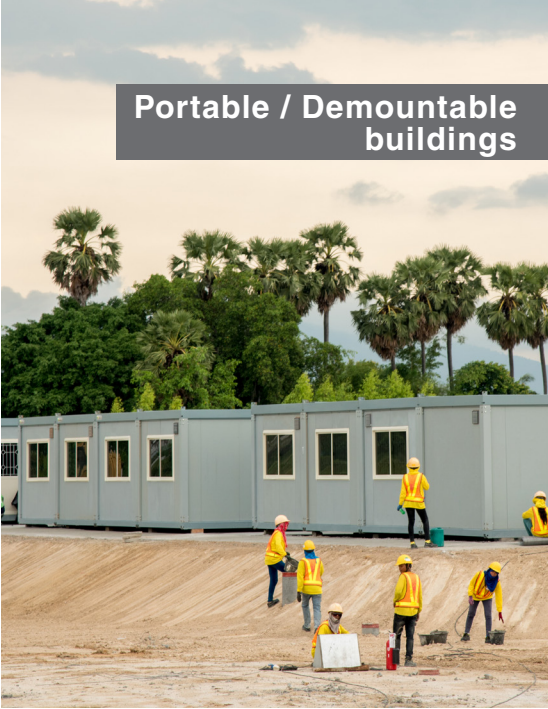


By choosing the CMS Mini 3 Quickflex Series Softwiring System you will receive a turnkey solution including consultation, makes up drawings, delivery and ongoing support.

The product is easy and fast to install with minimal parts to ensure simplicity, reduce on-site labour resulting in faster installations and cost savings.

The system is environmentally friendly with zero waste on-site and offers total flexibility for the future. All products are factory tested in a quality controlled environment not only ensuring electrical safety, this also minimises the need for skilled labour and future maintenance.

Portable / Demountable buildings



Hotel accommodation



SUITABLE APPLICATIONS

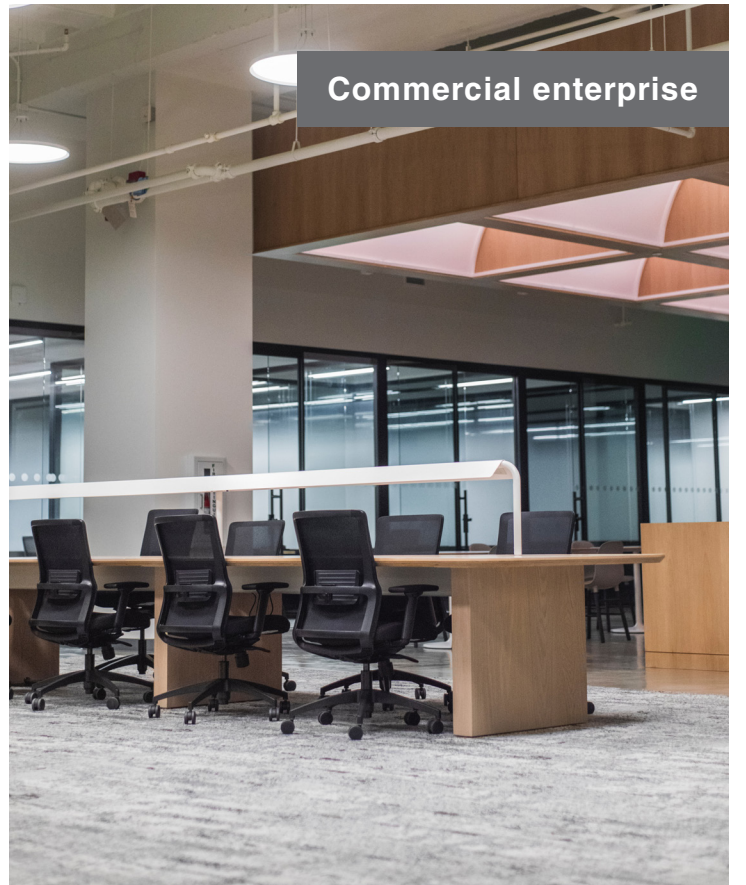
Hospital & Aged care accommodation



Student accommodation



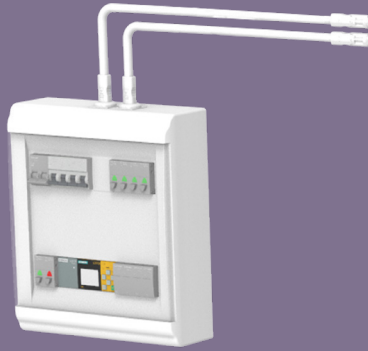
Commercial enterprise



High-density residential

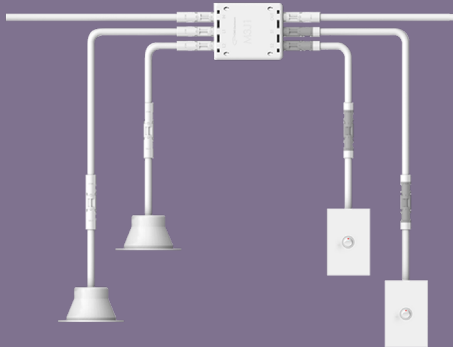


The Mini 3 Features



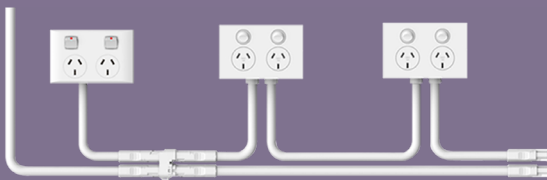
From the switchboard

Mini 3's panel mount connector is designed to be installed at the switchboard, effectively eliminating on-site terminations.



Switching and lighting

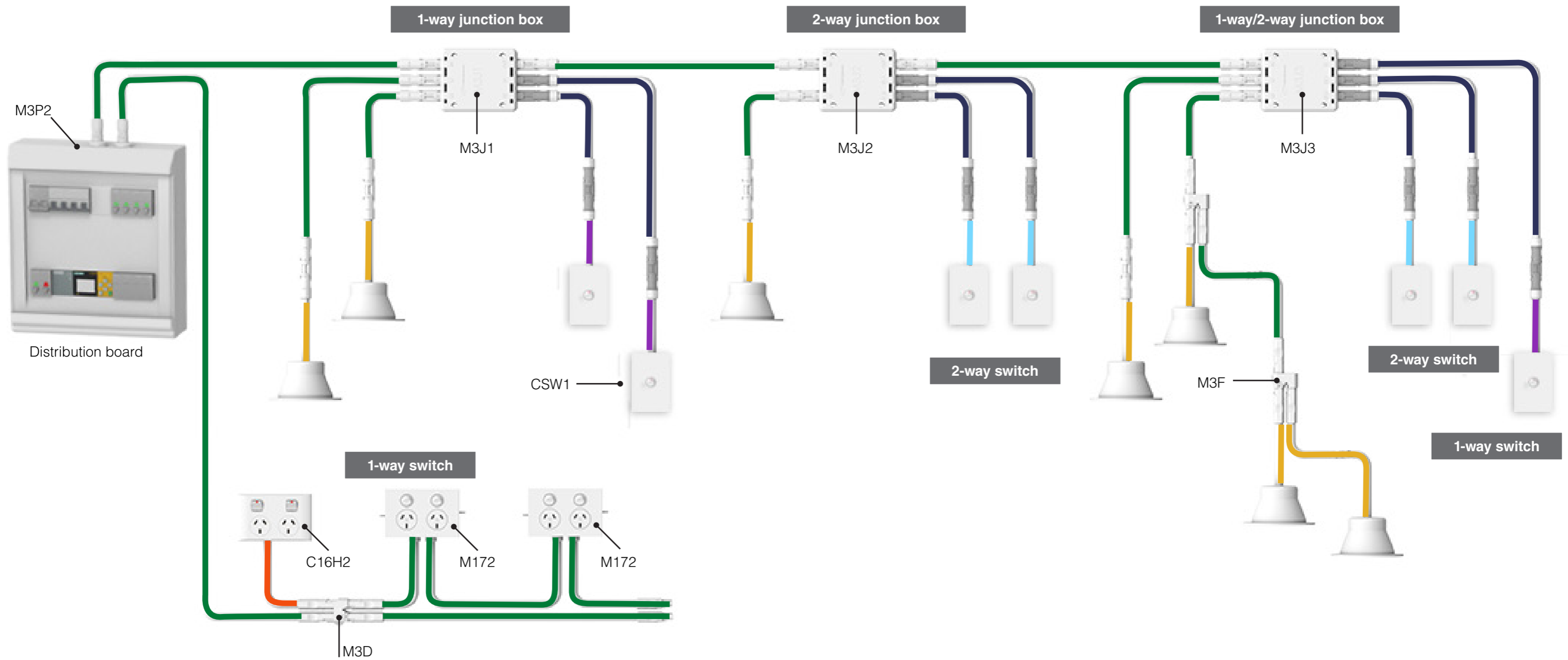
Utilising our expertise from modular housing and caravans, Mini 3 features a configurable 1, 2 or 3 way switching box with softwired structured cabling between switching and lighting.



Softwired power

Mini 3 enables the daisy chaining of wall power-outlets, directly from the switchboard, eliminating terminations, reducing cable waste and more accurate material projections.

The Mini 3 System



Key

- M32B power interconnecting lead, 3-core, 2.5mm²
- M33B1 male power coupler to free-end lead, 3-core, 2.5mm²
- M32E switching interconnecting lead, 3-core, 1.5mm²
- M33E1 male switching coupler to free-end lead, 3-core, 1.5mm²
- M33C1 male lighting coupler to free-end lead, 3-core 1.0mm²
- M33G1 male switching coupler to free-end lead, 2-core, 1.5mm²

Product Line up

Panel Mount Starter



M3P2
Panel mount connector - female

Wall Plates



M172
Softwired wall plate
2 x 10a switched GPO



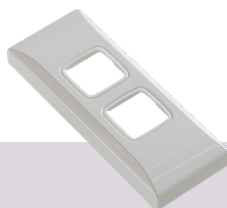
C16H1
C Series hardwired wall plate
single GPO



C16H2
C Series hardwired wall plate
double GPO



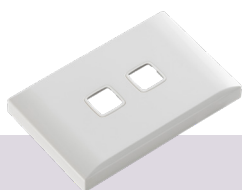
CSA1
C Series single switch plate



CSA2
C Series double switch plate



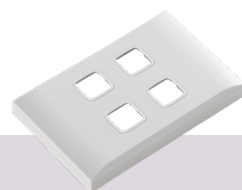
CSW1
C Series single provision wall plate



CSW2
C Series dual provision wall plate



CSW3
C Series triple provision wall plate



CSW4
C Series quad provision wall plate

Adaptors



M3D
1-in-3-out adaptor



M3F
1-in-2-out adaptor

Switch Boxes



M3J1
Switch box in-out with
2 x 1-way switch



M3J2
Switch box in-out with
1 x 2-way switch



M3J3
Switch box in-only with
1 x 1-way & 1 x 2-way switch

Product Line up

Power 3-core



2.5mm²

M33B1
Male coupler to free-end lead
3-core power, 2.5mm²
(200mm & 1-5m lengths as standard)

M32B
Interconnecting lead
3-core power, 2.5mm²
(1-10m lengths as standard)

Lighting 3-core



M33C1
Male coupler to free-end lead
3-core power, 1.0mm²
(200mm & 1-5m lengths as standard)

M32B
Interconnecting lead
3-core power, 2.5mm²
(1-10m lengths as standard)

Switching (2-way) 3-core



1.5mm²

M33E1
Male coupler to free-end lead
2-way switching, 3-core, 1.5mm²
(200mm & 1-5m lengths as standard)

M32E
Interconnecting lead
2-way switching, 3-core, 1.5mm²
(1-10m lengths as standard)



2.5mm²

M33D1
Male coupler to free-end lead
2-way switching, 3-core, 2.5mm²
(200mm & 1-5m lengths as standard)

M32D
Interconnecting lead
2-way switching, 3-core, 2.5mm²
(1-10m lengths as standard)

Switching (1-way) 2-core



1.5mm²

M33G1

Male coupler to free-end lead
1-way switching, 2-core, 1.5mm²
(200mm & 1-5m lengths as standard)

M32E

Interconnecting lead
2-way switching, 3-core, 1.5mm²
(1-10m lengths as standard)



2.5mm²

M33F1

Male coupler to free-end lead
1-way switching, 2-core, 2.5mm²
(200mm & 1-5m lengths as standard)

M32D

Interconnecting lead
2-way switching, 3-core, 2.5mm²
(1-10m lengths as standard)

REGIONAL OFFICES

Australia	1300 159 159
New Zealand	+64 (0) 9 582 0776
Singapore	+65 9006 0767
Malaysia	+60 162 077 106
United Kingdom	+44 (0) 7531 162 631
United States	+1 214 238 8296

SALES & TECHNICAL SUPPORT

Sales sales@cmselectra.com

Estimating estimating@cmselectra.com

Connect with us



www.cmselectra.com

Disclaimer:

CMS has made every attempt to ensure the accuracy and reliability of the information provided in this document are correct. All information contained in this document is to be used for general guidance only. CMS reserves the right to change, delete or modify the information without notice.

Created: March 2021.

