

# Audio-Visual Range

**APPLICATION BROCHURE**

# Audio-Visual

All companies require AV products in some form whether it be data transfer, HDMI or VGA. CMS provides AV provisional products to suit all areas of the workplace whether it be a workstation, floor box or inside a TV bracket.

Our Audio/Visual range can be used in our modular wiring systems, including meeting tables, moveable walls and flush floor boxes.



**APPLICATION BROCHURE**


**SW18BF**  
25mm Tile f/w through 'F' connector (Pay TV)



**SW18BVV**  
25mm Tile f/w VGA socket



**SW18BRCA**  
25mm Tile f/w 3 x RCA socket with solder tabs



**SW18BSJ3**  
25mm Tile f/w 3.5mm Stereo Jack



**SW18BSJ6**  
25mm Tile f/w 6.5mm Stereo Jack



**SW18BX3**  
25mm Tile f/w Mini XLR 3pin plug with solder cups



**SW18BX4**  
25mm Tile f/w Mini XLR 4pin plug with solder cups



**SW18USB32**  
SW18 25mm Tile f/w Dual USB3 Port, 1500mm Leads



**SW18CVV**  
SW18C Fitted with VGA-VGA Mini



**SW18CDVI**  
50mm Data Tile - f/w DVI Female Barrel connector



**SW18CV1**  
50mm Tile f/w VGA high density - Cut out only



**SW18CLXLR**  
50mm Tile c/w large XLR Connector



**USB3CLIPSS**  
USB Single inline adaptor to suit CMS Standard data 100mm lead



**USB3CLIP15**  
USB Single inline adaptor to suit CMS Standard data 1500mm lead



**HDMICLIP**  
Single inline adaptor for CMS Standard data 100mm lead



**USB3AA20WT**  
USB3 Type 'A' Plug to type 'A' Plug 2000mm - White



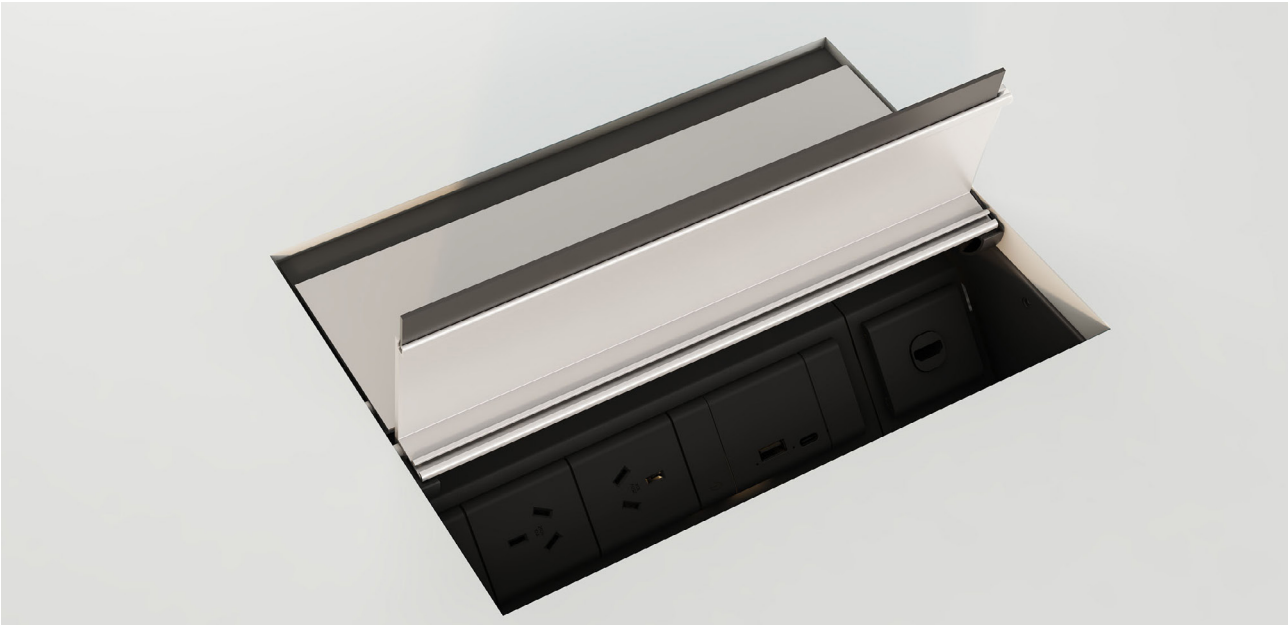
**USB2AM15BK**  
USB2 Type A to Mini 1500mm



**USB2AB18BK**  
USB2 lead Type A to B 1800mm



**USB3AAA**  
USB3 Adaptor Type 'A' to type 'A' Plug

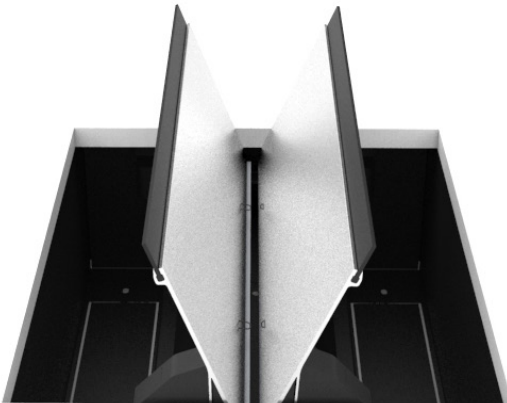


# EXECUTIVE BOX

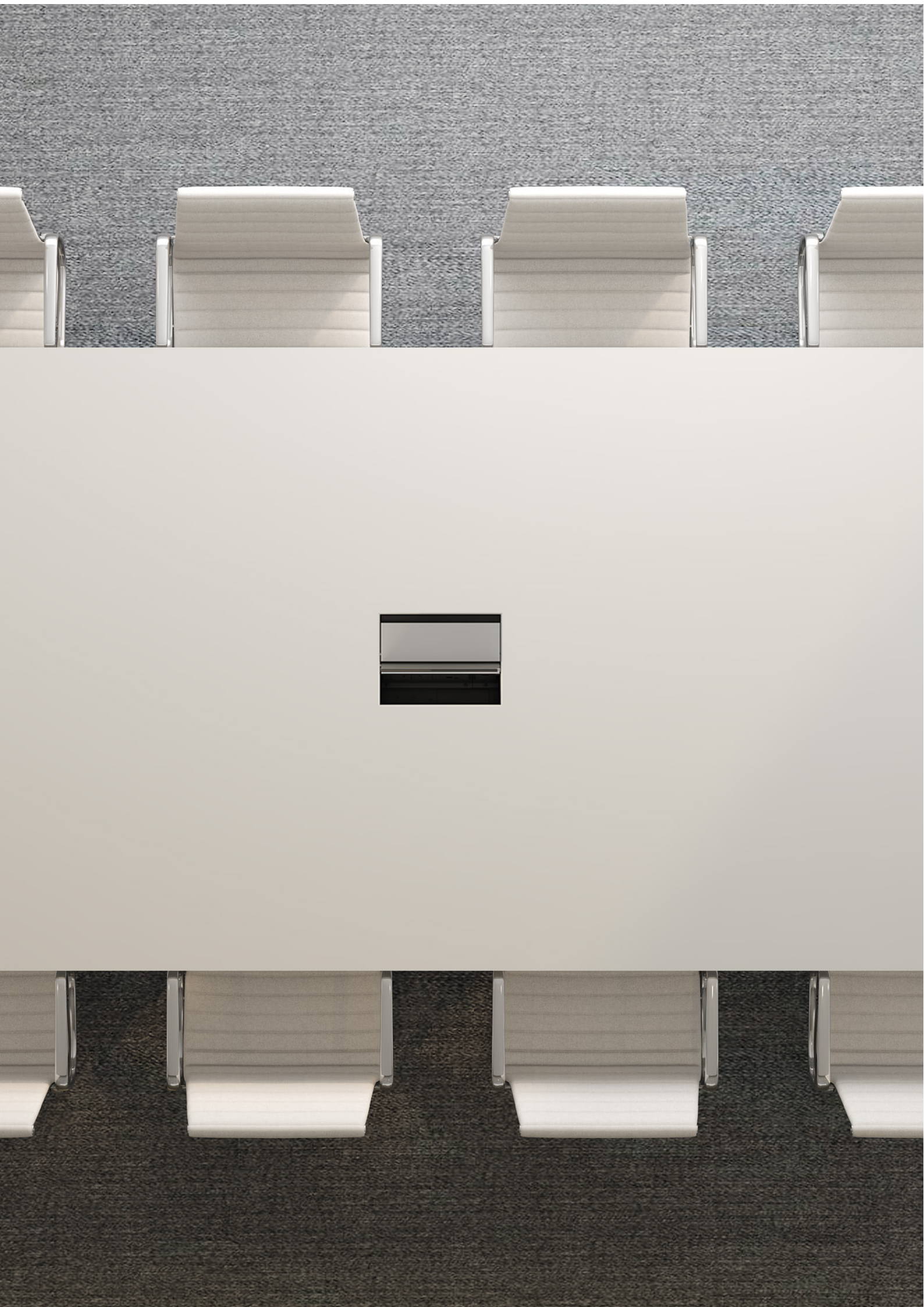
---

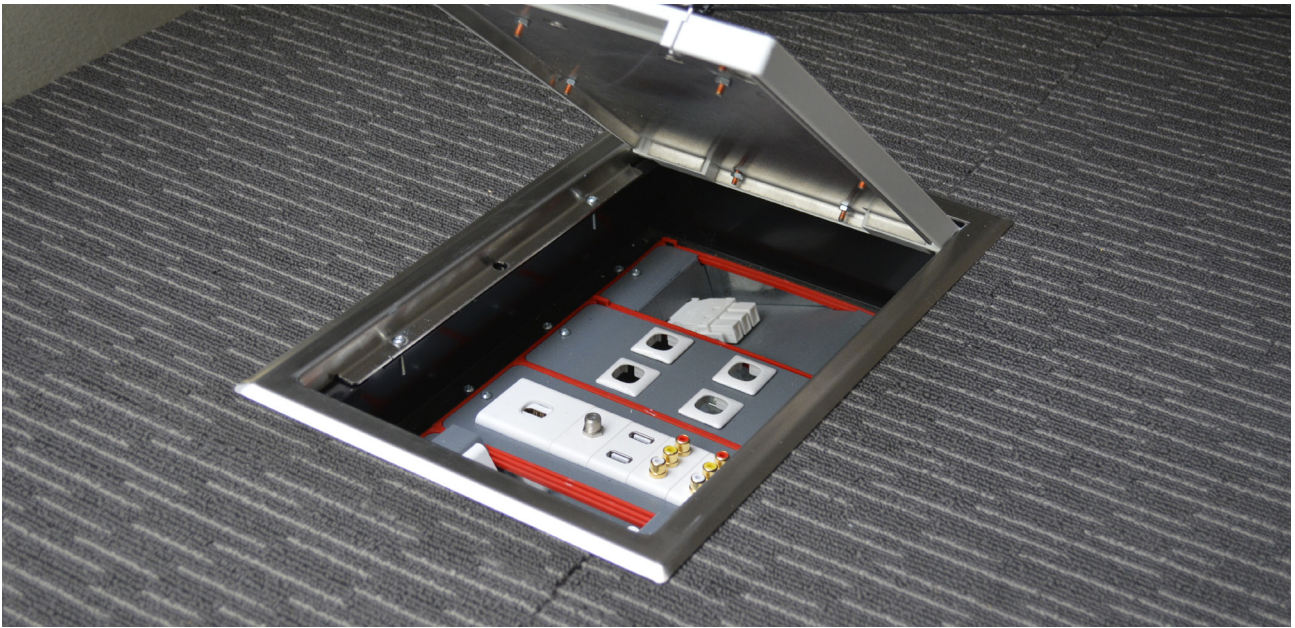
## BORDERLESS ELEGANCE

The CMS Executive in-desk box provides an effective way of supplying power and communications connections within a boardroom, conference or meeting table. It enables all services to be connected within the work surface with easy access to power and data through the stylish bead blasted anodised lid & brush strips.









# TITAN FLOORBOX

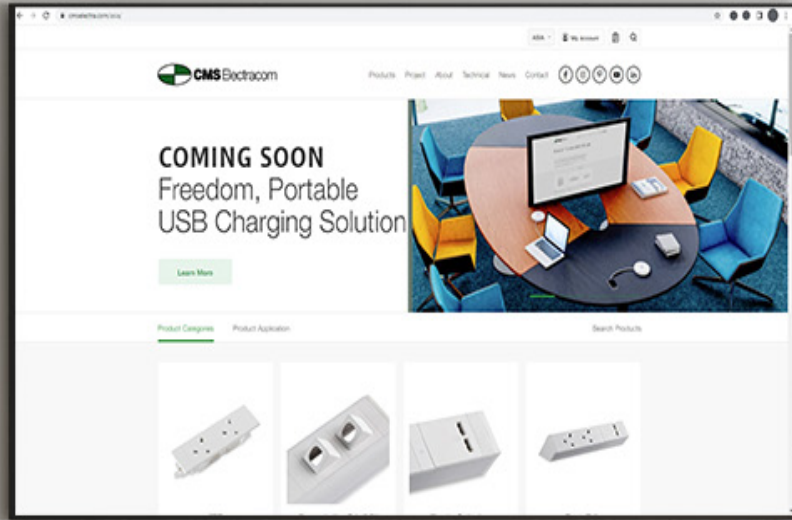
## Enterprise AV & Technology

The Titan Floor Box series is designed for maximum flexibility and safety, incorporating a soft-close lid with slow-sliding hinges while housing power, data and AV to suit any requirement.

The Soft Close lid features an easy-lift handle, oversized cable exit cap with soft close dampeners for protection from accidental closures during handling. Whichever AV requirement you need whether it be HDMI, VGA or USB, our Titan floor box has the capability to have it fitted.









# ECHO

## Minimalistic Surface Design

CMS Echo delivers the latest charging technology to empower engaging and connected spaces within the commercial workplace, integrating easily into moveable walls.

It can be equipped with any combination of USB C+A Charging, HDMI and Standard Power. Available in 3 shell sizes; Single, Duo and Trio, with a shallow depth of 46mm, it will fit perfectly into your AV set up.









## IN-WALL BRACKET

---

### Powerfully Minimal

The CMS In-Wall Bracket recesses easily into the wall, providing storage for media peripherals and allowing the display to be mounted flat against the wall.

A stand out advantage is that the bracket has been designed to protect your room acoustics (rated Rw59).

Able to accommodate up to an 82-inch display (LED, LCD or Plasma), while also integrating power, data and AV, it is perfect for any meeting room.









## REGIONAL OFFICES

Australia	1300 159 159
New Zealand	+64 (09) 582 0776
Singapore	+65 9006 0767
Malaysia	+60 162 077 106
United Kingdom	+44 (0) 7531 162 631
United States	+1 214 238 8296

## SALES & TECHNICAL SUPPORT

Sales: [sales@cmselectra.com](mailto:sales@cmselectra.com)

Estimating: [estimating@cmselectra.com](mailto:estimating@cmselectra.com)

Connect with us



[www.cmselectra.com](http://www.cmselectra.com)

### Disclaimer:

CMS has made every attempt to ensure the accuracy and reliability of the information provided in this document are correct. All information contained in this document is to be used for general guidance only. CMS reserves the right to change, delete or modify the information without notice.  
© CMS Electracom 2022