

Conferencing Solutions

APPLICATION BROCHURE

Small Conferencing Spaces

Loosely defined to seat approximately 6-10 people at around 9m², small meeting rooms are ideal for small department meetings, interviews, or video meetings. Small conference spaces greatly benefit from power and technology, keeping mobile and laptop devices charged for extended video conferences and collaborative sessions.

Konexus

All-in-one



Blinky

Multi-directional Power



Echo Series - Single & Trio

Powerfully minimal



100W USB-C Under-Desk Module

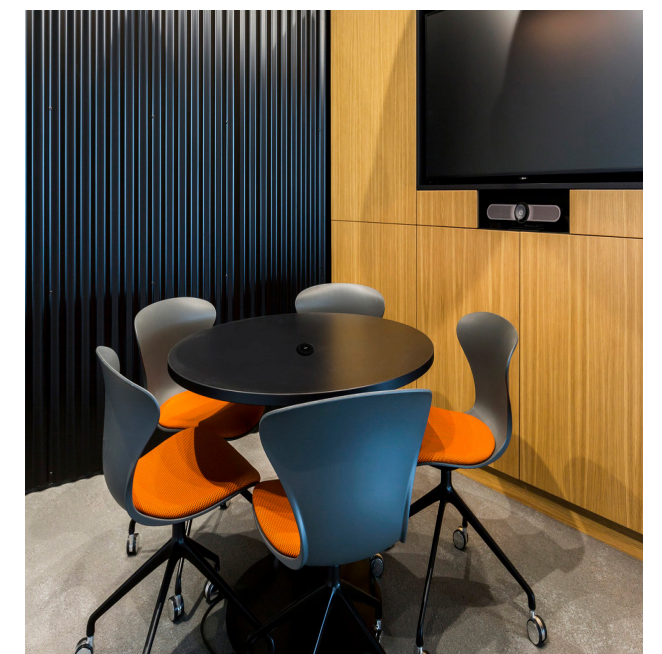
Charging power within reach



Product Highlights:

- Integrate Power and Charging technology to take your space to the next level.
- Specify up to 100W of USB-C PD charging power.
- Modules feature push-shuttered power outlets to prevent dust and build-up.
- Multi-directional modules deliver seamless access to charging ports and power.
- Flush-fitting or concealed-lid options to provide the perfect finish.





Medium Conferencing Spaces

Designed for approximately 10-16 people and around 16-20m², designed to accommodate large single or multiple department meetings. At this size, power per-person considerations adjust slightly with individual power and charging requirements being addressed with different options. CMS offer a range of concealed lid options with surface matching to suit various boardroom table finishes.

Products:

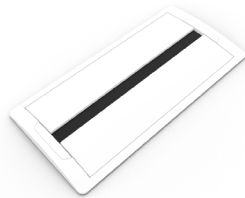
Executive

Borderless elegance



Accede

Single & dual lid



100W USB-C Clip-in Bezel

Energised soft seating & table box integration



Echo Trio

Effortless integration



Bilinky

Multi-directional convenience



Product Highlights:

- Integrate Power and Charging technology to take your space to the next level.
- Specify up to 100W of USB-C PD charging power.
- Modules feature push-shuttered power outlets to prevent dust and build-up.
- Multi-directional modules deliver seamless access to charging ports and power.
- Flush-fitting or concealed-lid options to provide the perfect finish.





Large Conference Spaces

For spaces beyond 16 people and around 20m², designed to accommodate delegations or seminars and beyond. Boardroom tables of this size are usually finished to an exceptional standard as the highlight of the room with special consideration to integration of power and charging services. CMS have consulted with industry leaders in design and manufacturing to bring to market technology integration that compliments the silhouette of the table.

Products:

Executive

Borderless elegance



Accede

Brilliantly finished integration



Bilinky

Multi-directional convenience



Konexus

All-in-one service module



100W USB-C Clip-in Bezel

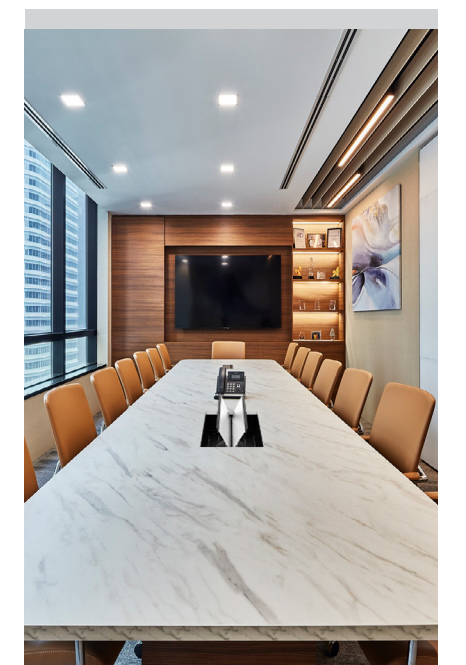
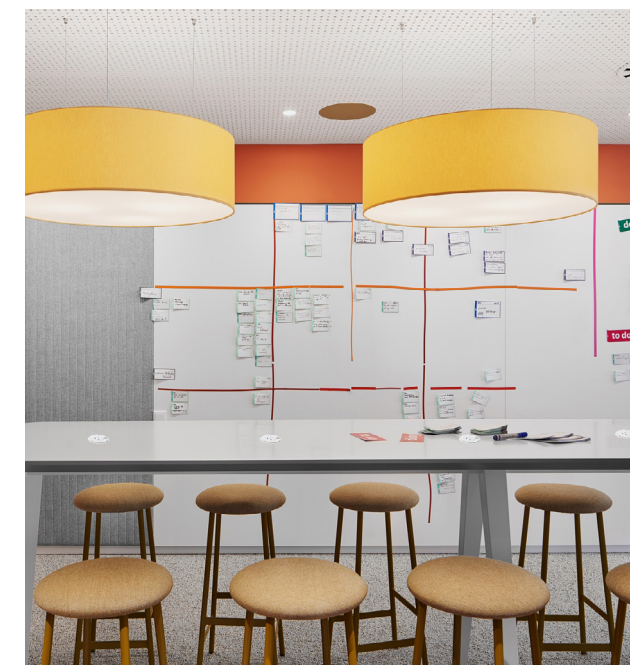
Energised soft seating & table box integration



Product Highlights:

- Integrate Power and Charging technology to take your space to the next level.
- Specify up to 100W of USB-C PD charging power.
- Modules feature push-shuttered power outlets to prevent dust and build-up.
- Multi-directional modules deliver seamless access to charging ports and power.
- Flush-fitting or concealed-lid options to provide the perfect finish.
- KonexUS combines Power and USB-C services together.





REGIONAL OFFICES

Australia	1300 159 159
New Zealand	+64 (09) 582 0776
Singapore	+65 9006 0767
Malaysia	+60 162 077 106
United Kingdom	+44 (0) 7531 162 631
United States	+1 214 238 8296

SALES & TECHNICAL SUPPORT

Sales: sales@cmselectra.com

Estimating: estimating@cmselectra.com

Connect with us



www.cmselectra.com

Disclaimer:

CMS has made every attempt to ensure the accuracy and reliability of the information provided in this document are correct. All information contained in this document is to be used for general guidance only. CMS reserves the right to change, delete or modify the information without notice.
© CMS Electracom 2022