

# Mini 3

## Quick Flex - Softwired Cabling System



# Quick Flex Mini 3

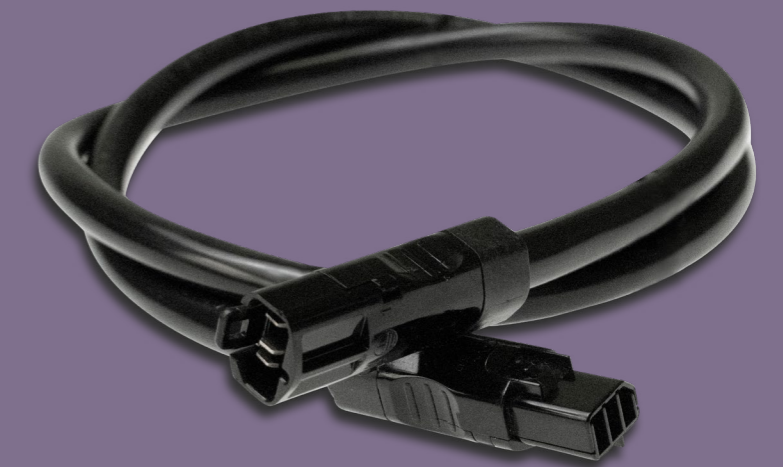
## A New Frontier in Softwiring

CMS Quick Flex Mini 3 series is the culmination of industry-leading expertise in developing application-specific softwiring systems for the commercial sector.

The benefits of softwiring structured cabling have led it to become industry standard within commercial, residential and healthcare buildings, from lighting to workstation cluster cabling, both of which CMS has been at the forefront. By using CMS Mini 3 connectors, labour costs, on-site faults and excess material wastes are eliminated.

The Quick Flex Mini 3 extends its connections all the way back to the switchboard meaning all key terminations are done within the control of the switchboard manufacturer, eliminating the cost and time of terminations completed on-site by the electrician.

Uniquely, Mini 3 addresses all electrical facets of the building, from Power, Lighting and Switching, all softwired from the switchboard. Mini 3's connector footprint fits within 25mm conduit, making it our most compact structured cabling solution to date.



## Mini 3 Features

### End to end solution

Designed from the switchboard out, Mini 3 is a single softwired solution from the switchboard, wall-outlet, lighting and switching.

### Fit for purpose

Mini 3 works on-site as you assume it would, it's minimal connector footprint is developed to fit easily within 25mm conduit.

### Unrivalled support

Place your project in the best possible hands with our world-class sales, engineering and production teams backed by the widest support and distribution network.

### Connect with confidence

Mini 3 softwiring features unique keyways and coloured connectors to prevent connection errors between power, lighting and switching circuits.



# Why Choose CMS

## Our Mission

is to enhance our clients experience ensuring all interactions within our products and services at CMS provide:

- » Confidence
- » Improved productivity
- » Convenience
- » A memorable experience

## Our Vision

### Commitment

Our clients are our most important asset. As a team we are dedicated to providing well crafted products made with passion.

### Innovation

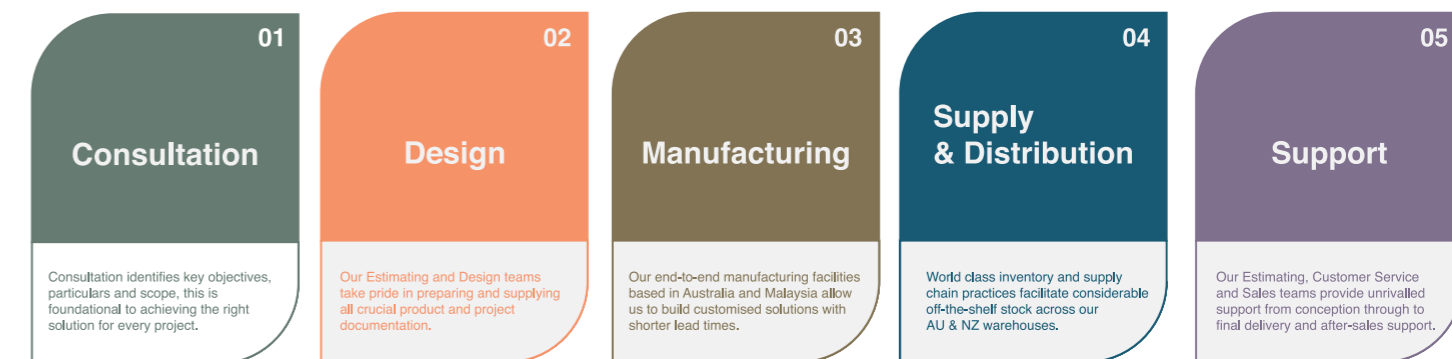
We are passionate about innovative design and pride ourselves at being the forefront of technology and creating value for our clients to pass onto the end user.

### Growth

As a market leader with over 40 years of experience in power solutions our commitment is to collaboratively work with our clients to achieve mutually beneficial outcomes.

# The CMS Turnkey Solution

## Our 5 Easy Steps

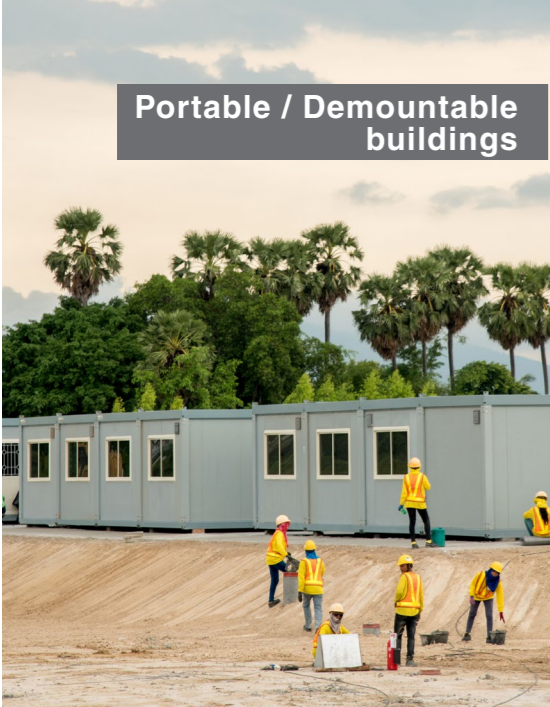


By choosing the CMS Mini 3 Quickflex Series Softwiring System you will receive a turnkey solution including consultation, makes up drawings, delivery and ongoing support.

The product is easy and fast to install with minimal parts to ensure simplicity, reduce on-site labour resulting in faster installations and cost savings.

The system is environmentally friendly with zero waste on-site and offers total flexibility for the future. All products are factory tested in a quality controlled environment not only ensuring electrical safety, this also minimises the need for skilled labour and future maintenance.

Portable / Demountable buildings



Hotel accommodation



# SUITABLE APPLICATIONS

Hospital & Aged care accommodation



Student accommodation



Commercial enterprise



High-density residential

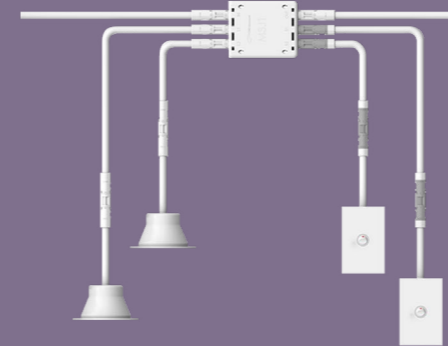


## The Mini 3 Features



### From the switchboard

Mini 3's panel mount connector is designed to be installed at the switchboard, effectively eliminating on-site terminations.



### Switching and lighting

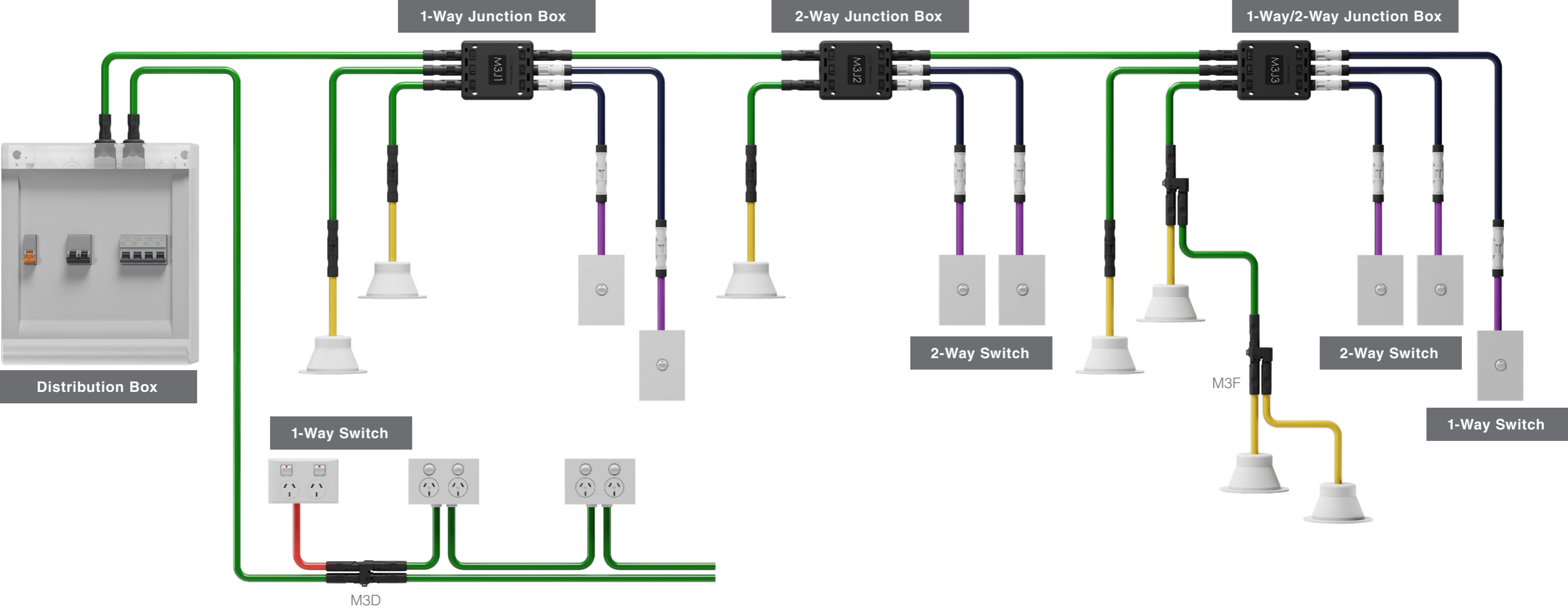
Utilising our expertise from modular housing and caravans, Mini 3 features a configurable 1, 2 or 3 way switching box with softwired structured cabling between switching and lighting.



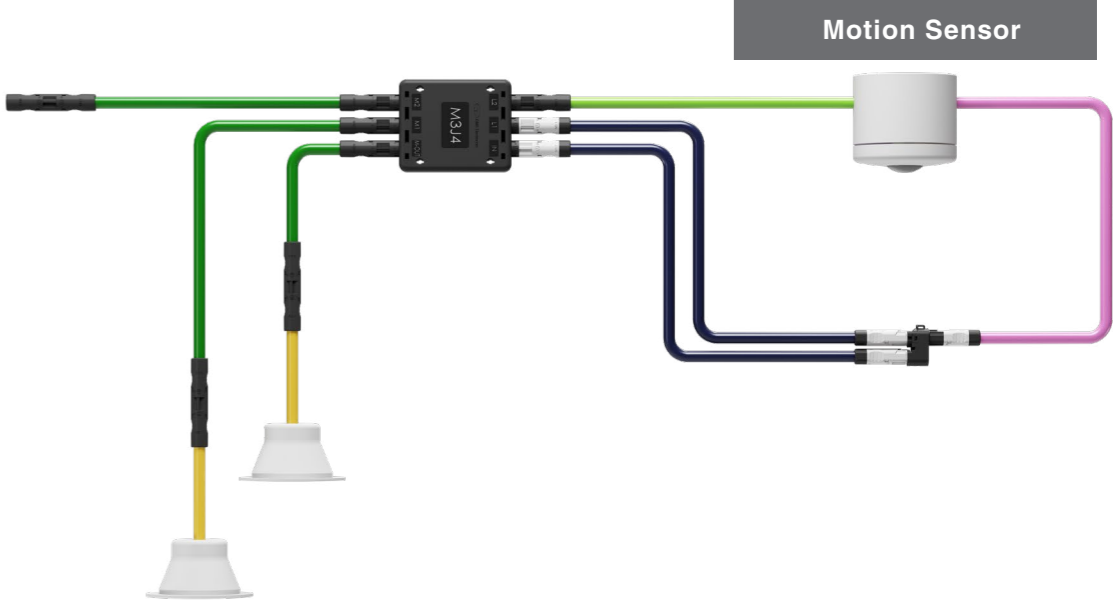
### Softwired power

Mini 3 enables the daisy chaining of wall power-outlets, directly from the switchboard, eliminating terminations, reducing cable waste and more accurate material projections.

# The Mini 3 System - Traditional False Ceiling



- Key**
- M32B power interconnecting lead, 3-core, 2.5mm<sup>2</sup>
  - M33B1 male power coupler to free-end lead, 3-core, 2.5mm<sup>2</sup>
  - M32D switching interconnecting lead, 3-core, 2.5mm<sup>2</sup>
  - M33C1 male lighting coupler to free-end lead, 3-core 1.0mm<sup>2</sup>
  - M33D1 male switching coupler to free-end lead, 3-core, 2.5mm<sup>2</sup>
  - M33H1 Male Power Coupler to free-end lead, 2-core, 2.5mm<sup>2</sup>
  - M33I2 Female Switching Coupler to free-end lead, 1-core, 2.5mm<sup>2</sup>





# Product Line up

## Panel Mount Starter



M3P.2BK  
Panel mount connector - female

## Power Sockets & Provision Plates



M17.2WT  
Softwired wall plate  
2 x 10a switched GPO



C16H.1WT  
C Series hardwired wall plate  
single GPO



C16H.2WT  
C Series hardwired wall plate  
double GPO



CSA1\*\*  
C Series single provision switch plate



CSA2\*\*  
C Series double provision switch plate



CSW1\*\*  
C Series single provision wall plate



CSW2\*\*  
C Series dual provision wall plate



CSW3\*\*  
C Series triple provision wall plate



CSW4\*\*  
C Series quad provision wall plate

## Switches for Provision Plates



iC10WT  
2-Way Switch 10amp, 250volt  
with looping terminal



iC10AWT  
Switch 10amp, 250volt  
with 2 way looping terminal

Please Note: iC10 & iC10A is used with the CS provision plates

## Adaptors



M3D\*\*  
1-in-3-out adaptor



M3F\*\*  
1-in-2-out adaptor

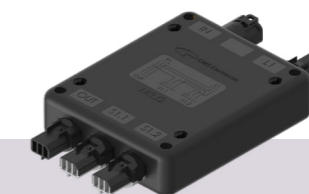


M3J3  
Switch box in-only with  
1 x 1-way & 1 x 2-way switch

## Switch Boxes



M3J1BK  
Switch box in-out with 2 x 1-way switch



M3J2BK  
Switch box in-out with 1 x 2-way switch



M3J3BK  
Switch box in-only with 1 x 1-way &  
1x 2-way switch



M3J4BK  
Switch box in-only with 1 x Motion Sensor

# Product Line up

## Switch Boxes (For Downlight Holes)



M3J5  
Switch box in-out with 1 x 2-way switch



M3J6  
Switch box in-out with 2 x 1-way switch



M3J7  
Switch box in-only with 1 x Motion Sensor

## Power 3-Core Lead



M32BBK  
Interconnecting Lead (2.5mm<sup>2</sup>)  
3-Core (1m - 5m Lengths)



M33B1BK  
Plug to Free End Lead (2.5mm<sup>2</sup>)  
3-Core (300mm - 2.5m Lengths)



M33B2BK  
Socket to Free End Lead  
(2.5mm<sup>2</sup>) 3-Core (300mm - 2.5m  
Lengths)

## Lighting 3-core



M32BBK  
Interconnecting Lead (2.5mm<sup>2</sup>)  
3-Core (1m - 5m Lengths)



M33C1BK  
Plug to Free End (1.0mm<sup>2</sup>)  
3-Core (300mm - 2.5m Lengths)  
standard)



M32DBK  
Switching Interconnecting Lid  
(2.5mm<sup>2</sup>) 3-Core (1m - 5m  
Lengths)



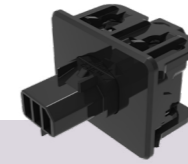
M33DBK  
Switching Plug to Free End  
(2.5mm<sup>2</sup>) 3-Core (300mm - 2.5m  
Lengths)

## Switching 3-Core

## Rewireable Connectors



M3R.1PBK  
Rewireable Connector for  
Panel Mount Starter (Male)



M3R.2PBK  
Rewireable Connector for Panel  
Mount Starter (Female)



M3R.1BK  
Rewireable Connector  
(Male)



M3R.2BK  
Rewireable Connector  
(Female)

## Leads for Motion Sensor



M33H1BK  
M3 Lead, Plug to Free End Tinned, 2 Core x  
2.5mm<sup>2</sup> - Black



M33I2BK  
Switch box in-out with 2 x 1-way switch M3  
Lead, Socket to Free End Tinned, 3 Core x  
2.5mm<sup>2</sup>

## Product Details

### Panel Mount Starter

<b>M3P2BK</b>	M3 Panel Mount Connector - Female - Black
---------------	---

### Wall Plates

<b>M17.2WT</b>	Softwired Wall Plate 2x 10a Switched GPO - White
<b>C16H.1WT</b>	C Series Hardwired Wall Plate Single GPO - White
<b>C16H.2WT</b>	C Series Hardwired Wall Plate Double GPO - White
<b>CSA1**</b>	C Series Single Switch Plate
<b>CSA2**</b>	C Series Double Switch Plate
<b>CSW1**</b>	C Series Single Provision Wall Plate
<b>CSW2**</b>	C Series Dual Provision Wall Plate
<b>CSW3**</b>	C Series Triple Provision Wall Plate
<b>CSW4**</b>	C Series Quad Provision Wall Plate

### Switches for Provision Plates

<b>iC10WT</b>	2-Way Switch 10amp, 250volt With Looping Terminal
<b>iC10AWT</b>	Switch 10amp, 250volt With 2 Way Looping Terminal

### Adaptors

<b>M3F**</b>	M3 1-in-2 Out Adaptor
<b>M3D**</b>	M3 1-in-3 Out Adaptor

### Switch Boxes

<b>M3J1BK</b>	M3 - 1 Way Junction Box - Black
<b>M3J2BK</b>	M3 - 2 Way Junction Box - Black
<b>M3J3BK</b>	M3 - 1 Way / 2 Way Junction Box - Black
<b>M3J4BK</b>	Switch box in-only with 1 x Motion Sensor

### Switch Boxes (For Downlight Holes)

<b>M3J5</b>	Switch box in-out with 1 x 2-way switch
<b>M3J6</b>	Switch box in-out with 2 x 1-way switch
<b>M3J7</b>	Description: Switch box in-only with 1 x Motion Sensor

### Rewireable Connectors

<b>M3R.1PBK</b>	M3 Rewireable Connector For Panel Mount Starter (Male)
<b>M3R.2PBK</b>	M3 Rewireable Connector For Panel Mount Starter (Female)
<b>M3R.1BK</b>	M3 Rewireable Connector (Male)
<b>M3R.2BK</b>	M3 Rewireable Connector (Female)

### Mini 3 Interconnecting Lead - 3-Core 2.5mm<sup>2</sup>

<b>M32B10BK</b>	Lead M3, 3 Core x 2.5mm, 1000mm - Black
<b>M32B15BK</b>	Lead M3, 3 Core x 2.5mm, 1500mm - Black
<b>M32B20BK</b>	Lead M3, 3 Core x 2.5mm, 2000mm - Black
<b>M32B25BK</b>	Lead M3, 3 Core x 2.5mm, 2500mm - Black
<b>M32B30BK</b>	Lead M3, 3 Core x 2.5mm, 3000mm - Black
<b>M32B40BK</b>	Lead M3, 3 Core x 2.5mm, 4000mm - Black
<b>M32B50BK</b>	Lead M3, 3 Core x 2.5mm, 5000mm - Black

### Mini 3 Interconnecting Lead - Switching 3-Core 2.5mm<sup>2</sup>

<b>M32D10BK</b>	Lead M3S, Switching 3 Core x 2.5mm, 1000mm - Black
<b>M32D15BK</b>	Lead M3S, Switching 3 Core x 2.5mm, 1500mm - Black
<b>M32D20BK</b>	Lead M3S, Switching 3 Core x 2.5mm, 2000mm - Black
<b>M32D25BK</b>	Lead M3S, Switching 3 Core x 2.5mm, 2500mm - Black
<b>M32D30BK</b>	Lead M3S, Switching 3 Core x 2.5mm, 3000mm - Black
<b>M32D40BK</b>	Lead M3S, Switching 3 Core x 2.5mm, 4000mm - Black
<b>M32D50BK</b>	Lead M3S, Switching 3 Core x 2.5mm, 5000mm - Black

### Plug To Free-End Lead - 3-Core 2.5mm<sup>2</sup>

<b>M33B103BK</b>	M3 Lead, Plug to Free End Tinned, 3 Core x 2.5mm, 300mm - Black
<b>M33B110BK</b>	M3 Lead, Plug to Free End Tinned, 3 Core x 2.5mm, 1000mm - Black
<b>M33B115BK</b>	M3 Lead, Plug to Free End Tinned, 3 Core x 2.5mm, 1500mm - Black
<b>M33B125BK</b>	M3 Lead, Plug to Free End Tinned, 3 Core x 2.5mm, 2500mm - Black

## Product Details

### Socket To Free-End Lead - 3-Core 2.5mm<sup>2</sup>

<b>M33B203BK</b>	M3 Lead, Socket to Free End Tinned, 3 Core x 2.5mm, 300mm - Black
<b>M33B210BK</b>	M3 Lead, Socket to Free End Tinned, 3 Core x 2.5mm, 1000mm - Black
<b>M33B215BK</b>	M3 Lead, Socket to Free End Tinned, 3 Core x 2.5mm, 1500mm - Black
<b>M33B225BK</b>	M3 Lead, Socket to Free End Tinned, 3 Core x 2.5mm, 2500mm - Black

### Plug To Free-End Lead - 3-Core 1.0mm<sup>2</sup>

<b>M33C103BK</b>	M3 Lead, Plug to Free End Tinned, 3 Core x 1.0mm A/N, 300mm - Black
<b>M33C110BK</b>	M3 Lead, Plug to Free End Tinned, 3 Core x 1.0mm A/N, 1000mm - Black
<b>M33C115BK</b>	M3 Lead, Plug to Free End Tinned, 3 Core x 1.0mm A/N, 1500mm - Black
<b>M33C125BK</b>	M3 Lead, Plug to Free End Tinned, 3 Core x 1.0mm A/N, 2500mm - Black

### Plug To Free-End Lead - Switching 3-Core 2.5mm<sup>2</sup>

<b>M33D103BK</b>	M3S Lead, Plug to Free End Tinned, Switching 3 Core x 2.5mm, 300mm - Black
<b>M33D110BK</b>	M3S Lead, Plug to Free End Tinned, Switching 3 Core x 2.5mm, 1000mm - Black
<b>M33D115BK</b>	M3S Lead, Plug to Free End Tinned, Switching 3 Core x 2.5mm, 1500mm - Black
<b>M33D125BK</b>	M3S Lead, Plug to Free End Tinned, Switching 3 Core x 2.5mm, 2500mm - Black

### Leads for Motion Sensor

<b>M33H103BK</b>	M3 Lead, Plug to Free End Tinned, 2 Core x 2.5mm <sup>2</sup> - 3000mm Black
<b>M33H110BK</b>	M3 Lead, Plug to Free End Tinned, 2 Core x 2.5mm <sup>2</sup> , - 1000mm Black
<b>M33H115BK</b>	M3 Lead, Plug to Free End Tinned, 2 Core x 2.5mm <sup>2</sup> , - 1500mm Black
<b>M33H125BK</b>	M3 Lead, Plug to Free End Tinned, 2 Core x 2.5mm <sup>2</sup> , - 2500mm Black
<b>M33I203BK</b>	M3 Lead, Socket to Free End Tinned, 3 Core x 2.5mm <sup>2</sup> - 3000mm Black
<b>M33I210BK</b>	M3 Lead, Socket to Free End Tinned, 3 Core x 2.5mm <sup>2</sup> - 1000mm Black
<b>M33I215BK</b>	M3 Lead, Socket to Free End Tinned, 3 Core x 2.5mm <sup>2</sup> - 1500mm Black
<b>M33I225BK</b>	M3 Lead, Socket to Free End Tinned, 3 Core x 2.5mm <sup>2</sup> - 2500mm Black

## REGIONAL OFFICES

Australia	1300 159 159
New Zealand	+64 (0) 9 582 0776
Singapore	+65 9006 0767
Malaysia	+60 162 077 106
United Kingdom	+44 (0) 7531 162 631
United States	+1 214 238 8296

## SALES & TECHNICAL SUPPORT

**Sales** [sales@cmselectra.com](mailto:sales@cmselectra.com)

**Estimating** [estimating@cmselectra.com](mailto:estimating@cmselectra.com)

Connect with us



[www.cmselectra.com](http://www.cmselectra.com)

### Disclaimer:

CMS has made every attempt to ensure the accuracy and reliability of the information provided in this document are correct. All information contained in this document is to be used for general guidance only. CMS reserves the right to change, delete or modify the information without notice. 1024

© CMS Electracom 2024

