

J SERIES

Caravan Power, Data & AV



Softwired Power Outlets & Inlets



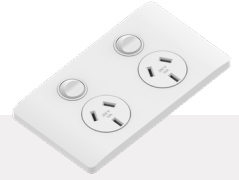
J16.1
J16 Series Single 10A switched GPO



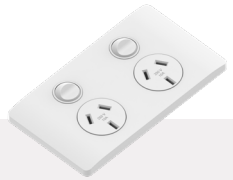
J16.2
J16 Dual Single 10A switched GPO



J17.1
J17 Series Single 10A switched GPO



J17.2
J17 Series Dual 10A switched GPO



J17.2FL
Double Socket with FL Coupler



J17.1U
Single Double Pole switch 10A socket + Dual 4A USB w/12VDC Terminal



J17.1UAC
Single Outlet with USB A/C



J17M
Single Outlet with Mounting Block FL Coupler



JOL10
Single 10amp autoswitch socket outlet IP44



JOL02
Double 10amp autoswitch socket outlet IP44



JIL15
Single 15amp autoswitch inlet plug IP44



JDC
Single 12VDC outlet - IP44



JILCB
Single 15A autoswitch inlet plug with RCD switch - IP44



JCBNW
Circuit breaker loom assembly with remote earth wire

Switch Plates, Switches & AV



JSW1A
Switch Plate Single Arch



JSW1
Switch Plate Single - NW



JSW2
Double Switch Plate



JSW3
Triple Switch Plate



JM1H
Single switch cover plate HDMI



JM2A
JSW2 + Audio Panel RCA



JM3AH
JSW3 + Audio RCA + HDMI Panel



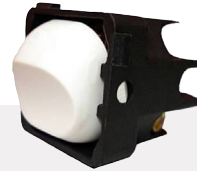
JTV
TV Inlet



JTVA
TV INLET-External unit Fitted with
TV FUNCTION (PAL to F Adapter)

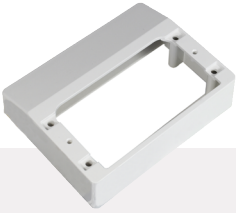


I10
Switch 10amp, 250volt with
Looping Terminal - with indicator
(not to be used as a 2 way switch)

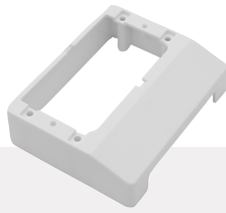


I10A
Switch 10amp, 250volt with
Looping Terminal - without indicator

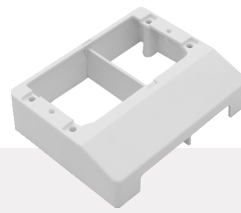
Mounting Plates & Covers



JMB
Mounting Block/Spacer suit GPO
Wall Plate



JMB-P
Mounting Block/Spacer Suit GPO
(Punched)



JMBU-P
Mounting Block/Spacer with divider,
Punched



JMB1
Mounting Block Flat - Suit switch
cover plate.



J16C
Shroud

Leads & Splitters



JL05BG
Interconnecting lead, "J"
connectors 5 meters.



J3DCL
1 in 2 out Double Adaptor



J3ECL
20amp Triple Adaptor, 1 in / 3 out

Product Details

Softwired Power Outlets & Inlets

J16.1**	Single 10amp GPO with 20amp Installation Coupler, Double Pole Switched
J16.2**	Dual 10amp GPO With 20amp Installation Coupler, Double Pole Switched
J17.1**	Single 10amp GPO With 20amp Installation Couplers, Double Pole Switched
J17.2**	Double 10amp GPO With 20amp Installation Couplers, Double Pole Switched
J17.2FL	Double Socket with FL Coupler
J17.U	Single Double Pole, Switch 10A Socket + Dual USB 4A Shared With 12VDC Supply Combo
J17.1UAC	Single Outlet with USB A/C
J17M	Single Outlet with Mounting Block FL Coupler
JOL10**	Double 10amp Pole Auto Switch Socket Outlet IP44 to J3.1 Installation Coupler
JOL02**	TWIN 10 amp Double Pole Auto Switch Socket Outlet IP44 to J3.1 Installation Coupler With Gasket
JIL15**	15amp Plug Power Inlet IP44 to J3.2 Installation Couple
JDC**	12V Power Outlet
JILCB**	Inlet Socket Outlet With RCD Switch
JCBNW	RCD Loom Assy With 250mm Tag In/out Lead

Switch Plates, Switches & AV

JSW1A	Switch Surface Mount
JSW1	12V Power Outlet
JSW2	Double Switch Plate (Extra Low Voltage Only, Not For 240Volt)
JSW3	Triple Switch Plate (Extra Low Voltage Only, Not For 240Volt)
JM1H	HDMI Panel
JM2A	Audio RCA Panel
JM3AH	Audio RCA & HDMI Panel
JTV	TV Outlet
JTVA	TV Inlet
I10	Switch 10amp, 250volt With Looping Terminal - With Indicator (Not To Be Used As A 2 Way Switch)
I10A	Switch 10amp, 250volt With Looping Terminal - Without Indicator

Product Details

Mounting Plates & Covers

JMB	Mounting Block
JMB-P	Mounting Block/Spacer Suit GPO (Punched)
JMBU-P**	Mounting Block/Spacer With Divider, Punched. To Be Used In Junction with J17.U
JMB1**	Mounting Block Flat Suit Data
J16C	Shroud

Leads & Splitters

JL05BG	500mm Interconnecting Cable, 20amp, 2.5mm
J3DCL	1 in 2 Out Double Adapter
J3ECL	20 amp Triple Adaptor 1 in / 3 Out