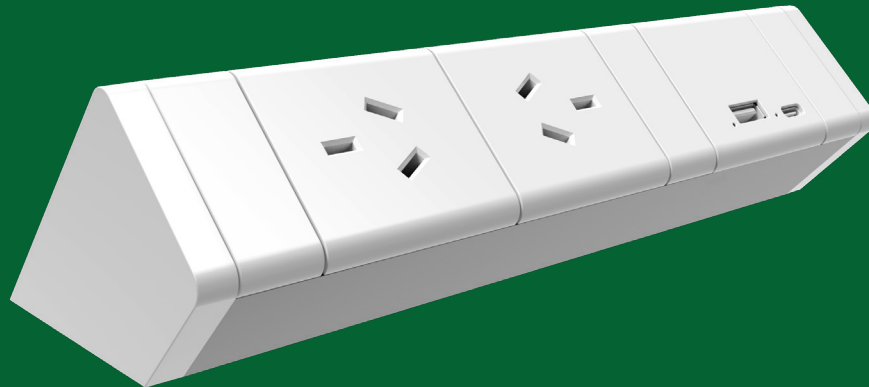


# ATHENA

## Above Desk Power Rail





# ATHENA

## Above Desk Power Rail

Our Athena Power Rails are stylish yet timelessly designed and have been part of the CMS range for over a decade while currently still holding its place as our #1 selling power rail. It's the ideal solution to a clutter-free workspace while also offering easy access to power and charging technology

### Colours Available

-  Aluminum finish / White
-  Aluminum finish / Black

## Key Features

- » Standard configurations and made to order options are available
- » The standard Athena rail comes in a natural anodised finish with black or white end caps and sockets.
- » Athena comes with an easy above desk screw clamp to secure the power rail to back edge of desktop.



Quick-fit desk-clamps  
Features self-fastening paddles  
for easy top-side mounting.



Helistand 15W Integrated  
Wireless Charger

Compatible with:



Inline USB Charging Modules.



### Customised options available

For more information please contact your CMS sales representative to discuss made to order options.

## Product Specifications

### Power Only, Power + Data

<b>AN02R0010D**</b>	2x Rotated GPO, L3D Splitter, 1000mm TAG Lead	<b>AN02R02**</b>	2x Rotated GPO, 2x Data Provision, L3D Splitter, 1000mm TAG Lead
---------------------	---	------------------	--

### Power + USB Charging

<b>AN01U10D**</b>	1x GPO, USB A/A Fast-Charge Module (30W Shared), L3D Splitter, 1000mm TAG Lead	<b>AN01RUAC310D**</b>	1x Rotated GPO, USB A/C Fast-Charge Module (30W Shared), L3D Splitter, 1000mm TAG Lead
<b>AN01UAC6510D**</b>	1x GPO, USB A/C Fast-Charge Module (65W Shared), L3D Splitter, 1000mm TAG Lead	<b>AN01UCC310D**</b>	1x GPO, USB C/C Fast-Charge Module (30W Shared), L3D Splitter, 1000mm TAG Lead
<b>AN02RUA10D**</b>	2x Rotated GPO, USB A/A Fast-Charge Module (30W Shared), L3D Splitter, 1000mm TAG Lead	<b>AN02RUA15D**</b>	2x Rotated GPO, USB A/A Fast-Charge Module (30W Shared), L3D Splitter, 1500mm TAG Lead
<b>AN02RUAC310D**</b>	2x Rotated GPO, USB A/C Fast-Charge Module (30W Shared), L3D Splitter, 1000mm TAG Lead	<b>AN02RUAC315D**</b>	2x Rotated GPO, USB A/C Fast-Charge Module (30W Shared), L3D Splitter, 1500mm TAG Lead
<b>AN02UAC6510D**</b>	2x GPO, USB A/C Fast-Charge Module (65W Shared), L3D Splitter, 1000mm TAG Lead	<b>AN02RUCC310D**</b>	2x Rotated GPO, USB C/C Fast-Charge Module (65W Shared), L3D Splitter, 1000mm TAG Lead

### Power + USB Wireless Charging

<b>AN01HSUAC310D**</b>	1x GPO, Helistand (15W) Wireless Charger, USB A/C Fast-Charge Module (30W Shared), L3D Splitter, 1000mm TAG Lead	<b>AN01HSUAC910D**</b>	1x GPO, Helistand (15W) Wireless Charger, USB A/C Fast-Charge Module (100W Shared), L3D Splitter, 1000mm TAG Lead
<b>AN02HSUAC310D**</b>	2x GPO, Helistand (15W) Wireless Charger, USB A/C Fast-Charge Module (30W Shared), L3D Splitter, 1000mm TAG Lead	<b>AN02HSUAC910D**</b>	2x GPO, Helistand (15W) Wireless Charger, USB A/C Fast-Charge Module (100W Shared), L3D Splitter, 1000mm TAG Lead

### Notes:

- Standard finish is anodised aluminium body
- \*\*Denotes End Cap, Clamp & Socket Colour: Black (BK), White (WT)
- USB Chargers are for use with IT/AV equipemnt only
- Please call for alternative colours & configurations
- Use of cleaning agents: Please ensure cleaning agents are compatible for use on moulded polycarbonate surfaces. Should any sign of degradation, cracking or discolouration be present or occur, immediately discontinue the use of the cleaning agent.
- Avoid phone cases with a metal strip when charging your phone wirelessly as the metal strip can cause damage to your phone or the wireless charging unit.