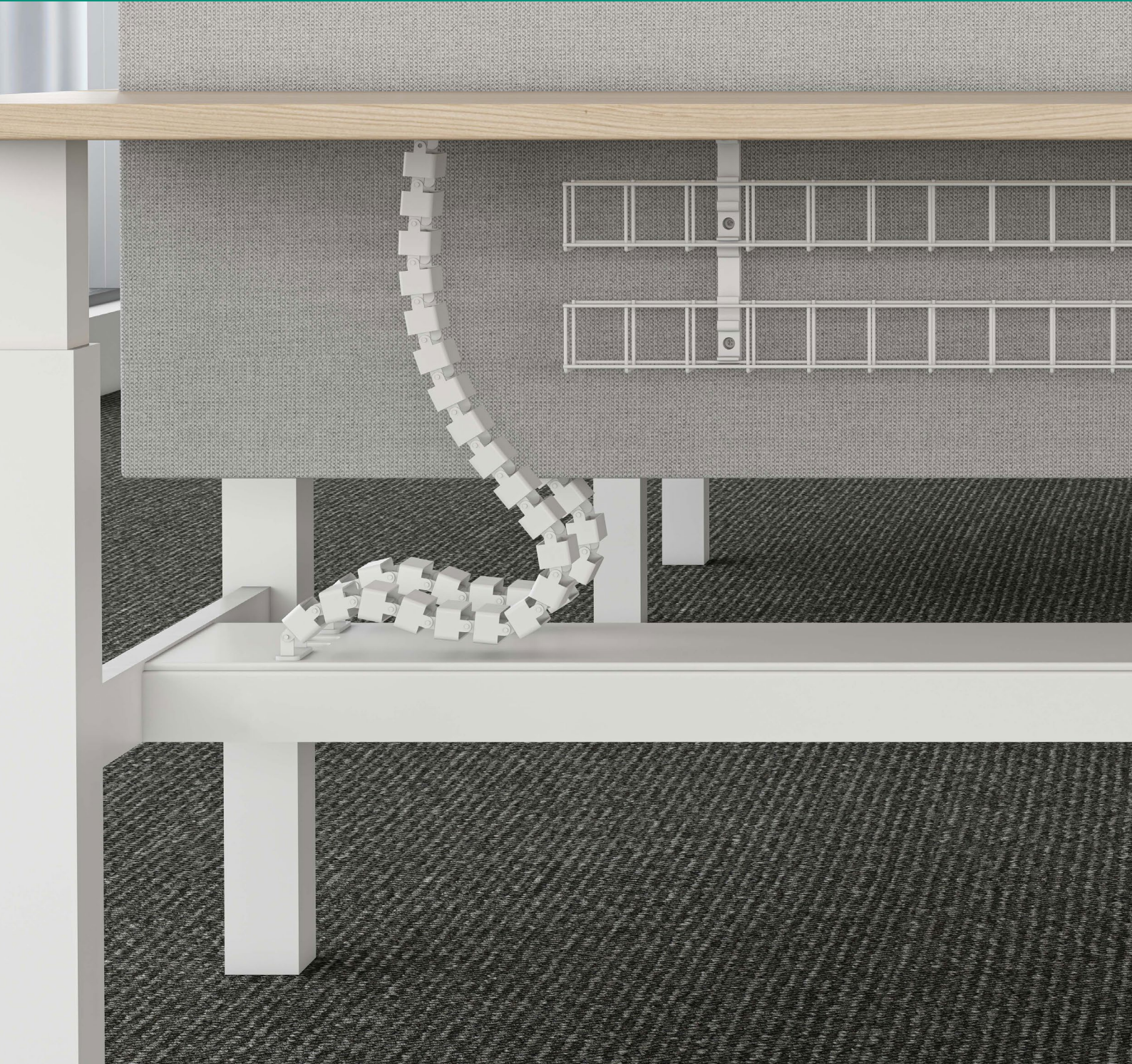


# TRAX

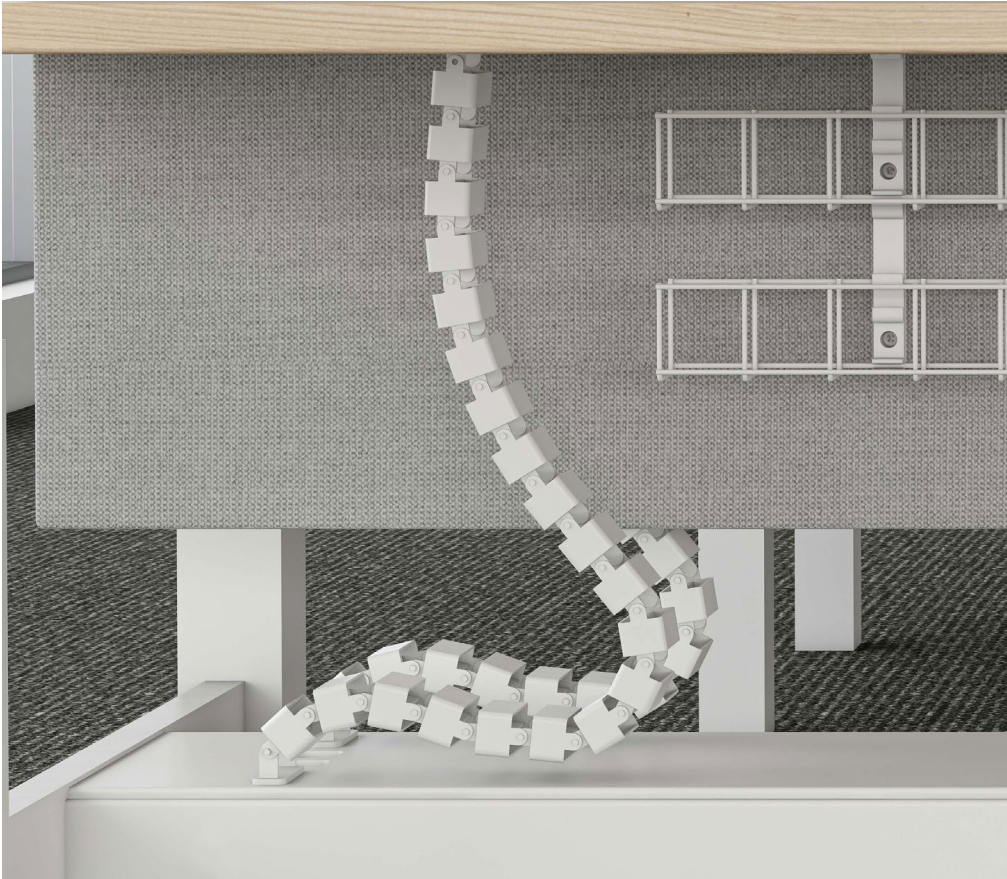
## Umbilical - Height Adjustable Cable Management



# TRAX

## Umbilical - Height Adjustable Cable Management

CMS Trax umbilical is specifically designed for cable protection when bringing power and data cables in a height adjustable table application. Trax features either single or dual compartment for cable distribution allowing power and data cabling to be run separate or simultaneously when using conduit.



### Colours Available

White  Black

### Key Features

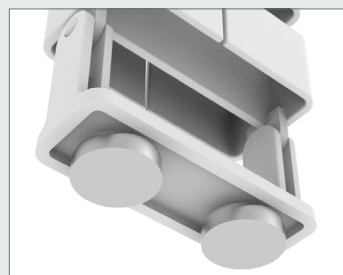
- » Trax is designed for height adjustable workstations
- » Fitted with brackets to connect to the underside of the desk and back to the fixed cable tray below.
- » A magnet set can fit the cable-tray bracket (sold separately)



Single Compartment (TRS60)



Dual Compartment (TRD60)



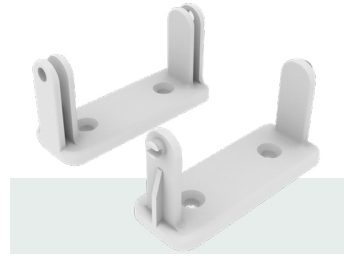
Magnet Set (TRMGK)



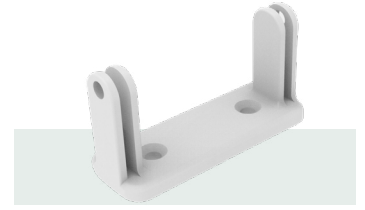
TRS60\*\*  
Trax single compartment 600mm



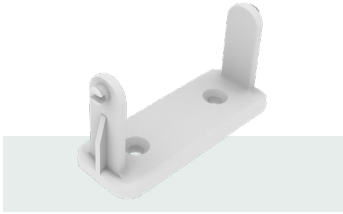
TRD60\*\*  
Trax dual compartment 600mm



TRMK\*\*  
Mounting kit



TRD\*\*  
Under-desk mounting bracket





TRB\*\*  
Mounting bracket.



TRMGK  
Magnet set for mounting  
base fixing.

## Product Specifications

	<b>TRSH12**</b>	1x Trax Single Compartment Umbilical Kit - 1200mm 1x Cable Tray Base Fixing (TRB) 1x Under-desk bracket (TRD)
	<b>TRDH12**</b>	1x Trax Dual Compartment Umbilical Kit - 1200mm 1x Cable Tray Base Fixing (TRB) 1x Under-Desk Bracket (TRD)

### Accessories

<b>TRS60**</b>	Trax Single Compartment 600mm
<b>TRD60**</b>	Trax Dual Compartment 600mm
<b>TRMK**</b>	Trax Series Mounting Kit - Under-Desk Bracket And Cable Tray Base Fixing
<b>TRD**</b>	Trax Under-Desk Mounting Bracket Only
<b>TRB**</b>	Trax Cable Tray Mounting Bracket Only
<b>TRMGK</b>	Trax Series Magnet Set For Mounting Base Fixing

#### Notes:

- \*\* Umbilical Colour: Black (BK), White (WT)
- TRMGK will only fix to steel surfaces