
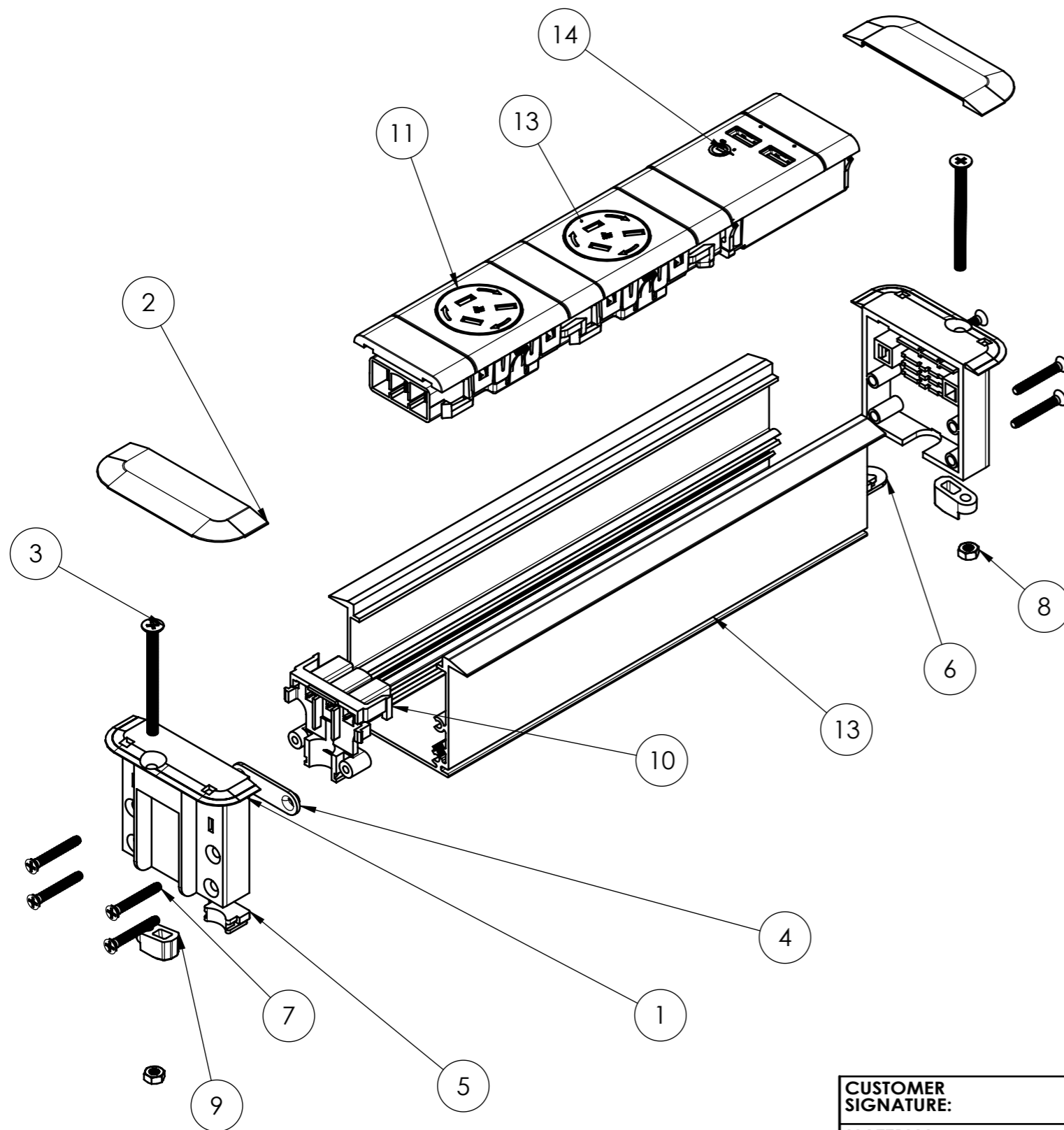


REV	DESCRIPTION	DATE	DRWN	APPV
3	UPDATED USB MODULE AND RAIL LENGTH	23/10/2017	JC	
2	CHANGED RAIL LENGTH	5/12/2016	JC	
1	RELEASED	10/11/2016	JC	
	REVISIONS			

<b>CUSTOMER SIGNATURE:</b>
<b>MATERIAL:</b> P.C / ALUMINIUM
<b>FINISH:</b> TEXTURED / ANODISED
<b>COLOUR:</b> WHITE / SILVER
THIS DRAWING & ASSOCIATED CAD FILES ARE ISSUED IN THE STRICTEST CONFIDENCE AND ARE ONLY TO BE USED IN THE COMMERCIAL INTERESTS OF CMS ELECTRACOM PTY LTD

<b>TOLERANCES UNLESS OTHERWISE STATED:</b>  X ±0.5 X.X ±0.2 X.XX ±0.1 X.XXX ±0.05 ANG ±0.5°
DRAWN IN mm TO AS1100 DO NOT SCALE

 <b>CMS Electracom</b>		<small>COPYRIGHT © 2015</small>	
<b>TITLE:</b> CERC02U			
<b>DRAWING:</b> LU9205		<b>REV:</b> 3	<b>A3</b>
SCALE 1:2		SHEET 1 OF 2	



ITEM NO.	PART NUMBER	QTY.
1	LU7895	2
2	LU7896	2
3	M4 x 50 CSK Machine Screw	2
4	93948 WIRE CLAMP	1
5	LU8338	1
6	LU8339	1
7	6G x 1" CSK screw blind	8
8	M4 hex nut	2
9	LU8672 Konexus ASM clamp foot	2
10	Zeus SW18 Connector	1
11	NW18RC01	1
12	NW18RCS01	1
13	Inline Extrusion	1
14	SW18UAA2	1

**CUSTOMER SIGNATURE:**

**MATERIAL:**  
P.C / ALUMINIUM

**FINISH:**  
TEXTURED / ANODISED

**COLOUR:**  
WHITE / SILVER

THIS DRAWING & ASSOCIATED CAD FILES ARE ISSUED IN THE STRICTEST CONFIDENCE AND ARE ONLY TO BE USED IN THE COMMERCIAL INTERESTS OF CMS ELECTRACOM PTY LTD

**TOLERANCES UNLESS OTHERWISE STATED:**

X ±0.5  
X.X ±0.2  
X.XX ±0.1  
X.XXX ±0.05  
ANG ±0.5°



**CMS Electracom** COPYRIGHT © 2015

**TITLE:**

CERC02U

**DRAWING:**

LU9205

**REV:**

3

A3

SCALE 1:2

SHEET 2 OF 2