

DALI

Structured Cabling

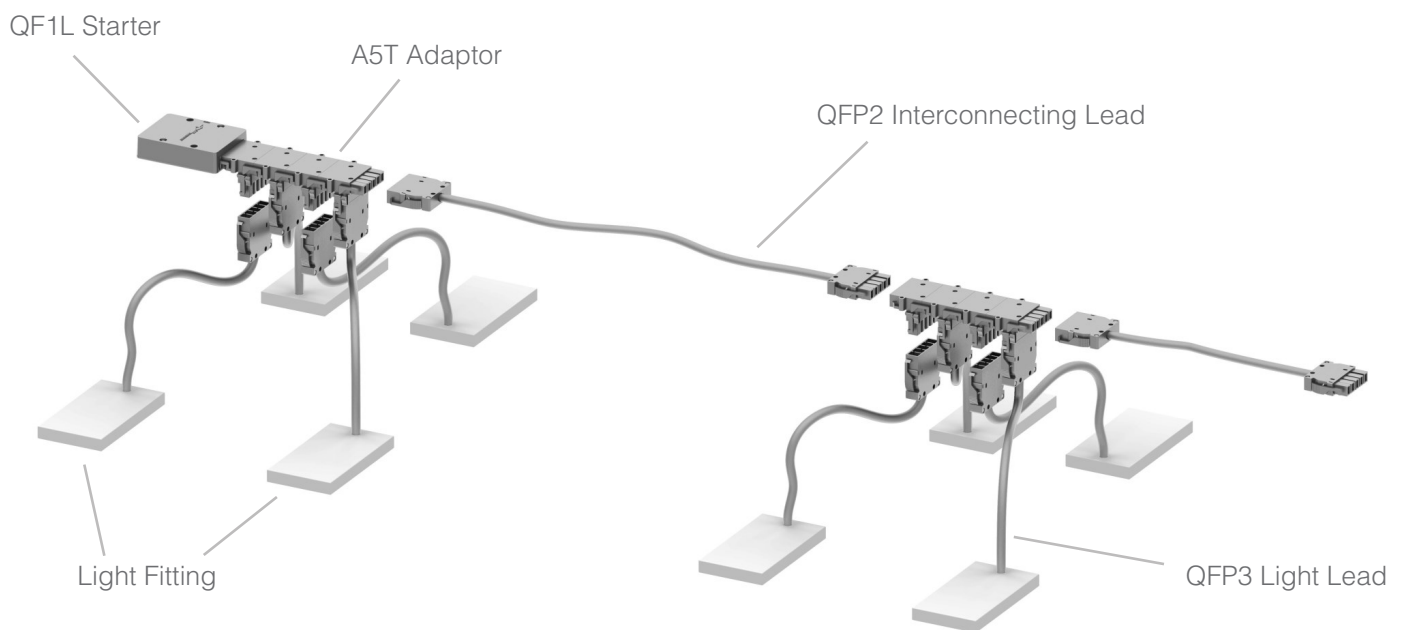


CMS Quick Flex - 5-Pole Cabling Solution

The CMS Quick Flex System is a tried and tested cabling solution that has been applied in major projects across Australia and New Zealand for over past decade.

It's a modular five pole softwiring system for Dali, DSI, CBUS, KNX & other systems requiring 5 wire lighting systems with it's own unique CMS connector system which insures excellent conductivity without the concern of separation at joints. Connectors can only be separated by a tool.

The 5-pole modular wiring system is increasing amongst new projects in Australia and New Zealand, and is being specified more frequently by designers and engineers. The energy efficiencies achieved from this form of modular wiring delivers exceptional cost savings, it's also a sustainable design solution for the end-user.



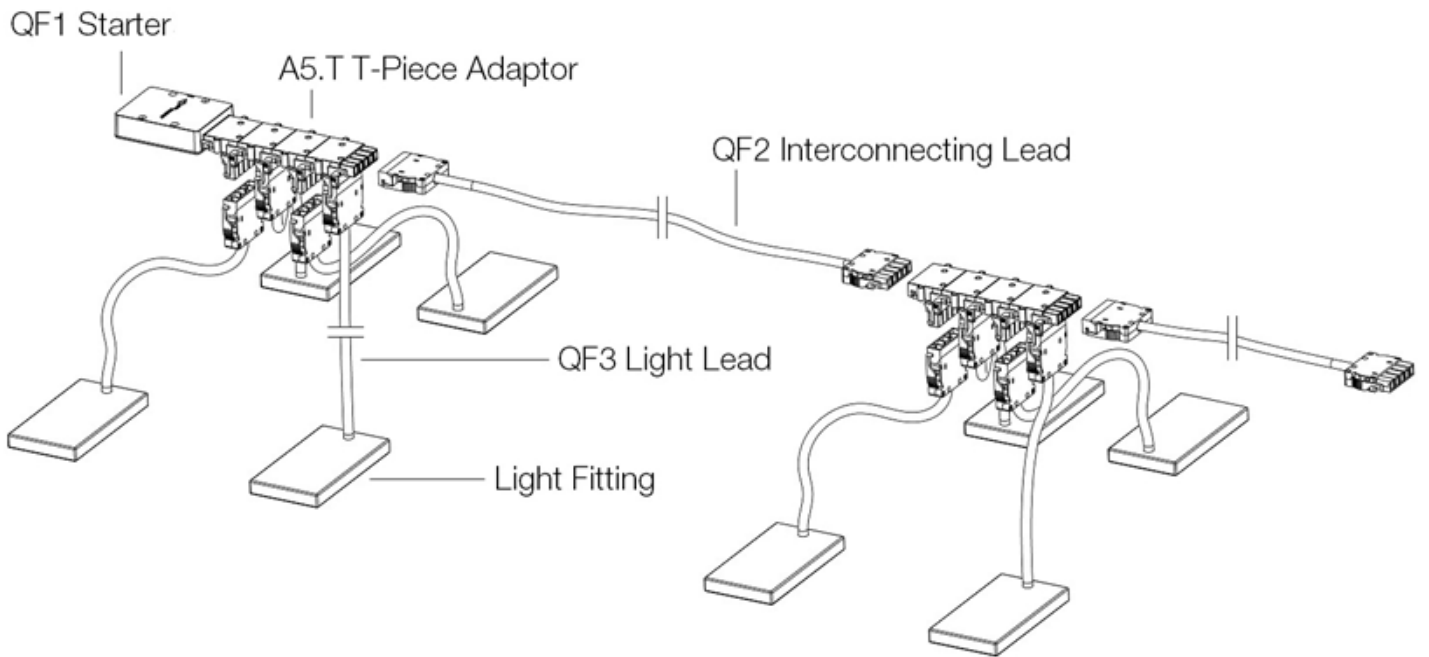
Key Features

- » Suitable for the following applications: education, retail, health, commercial offices, airports and public sectors.
- » Significantly reduces installation time for the contractor, delivering up to 30% reduction in labour costs.
- » Reduction in waste - zero on-site material waste.
- » Uncomplicated wiring layout, requiring only 4 components for a total solution.
- » Energy efficient
- » Safe and easy maintenance - isolation during maintenance by removing a single light lead from the bank of 'T' pieces.
- » Simple integration

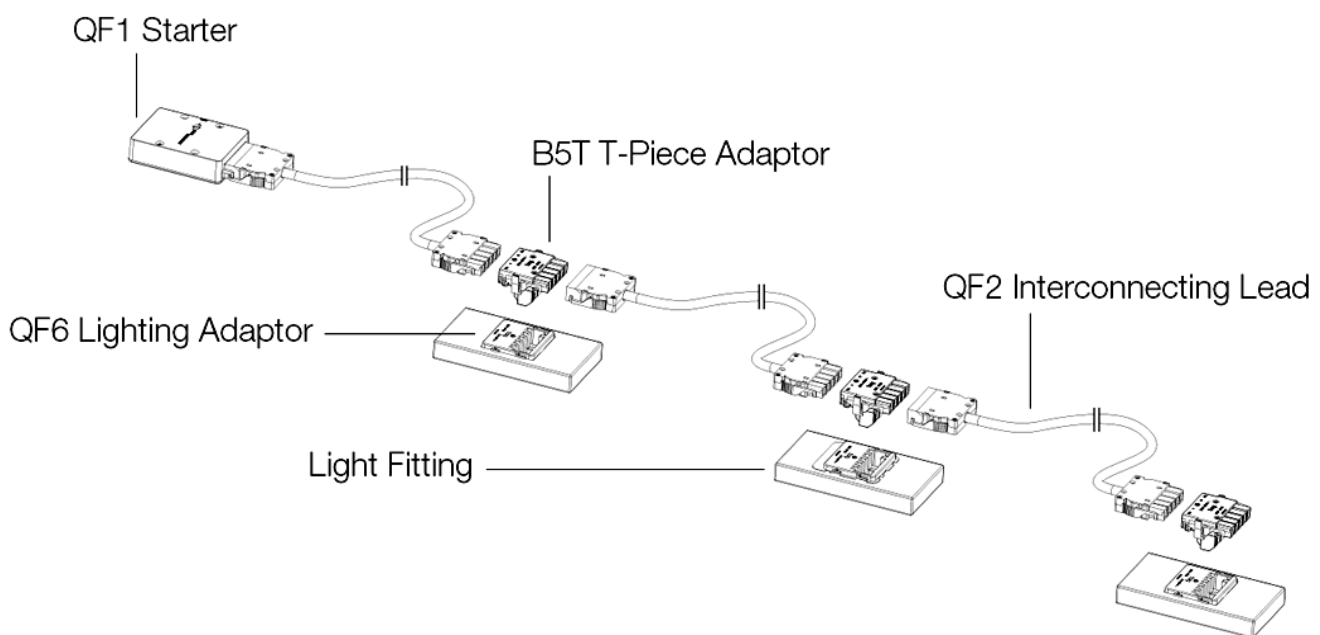


CMS Quick Flex

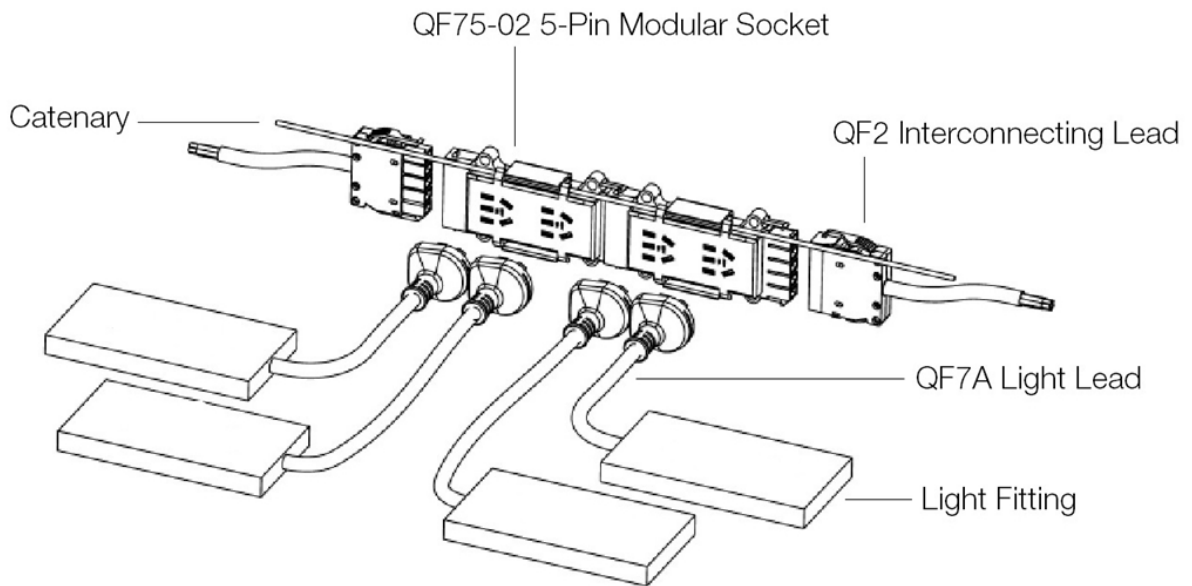
Light Lead/T-Piece Common Configuration



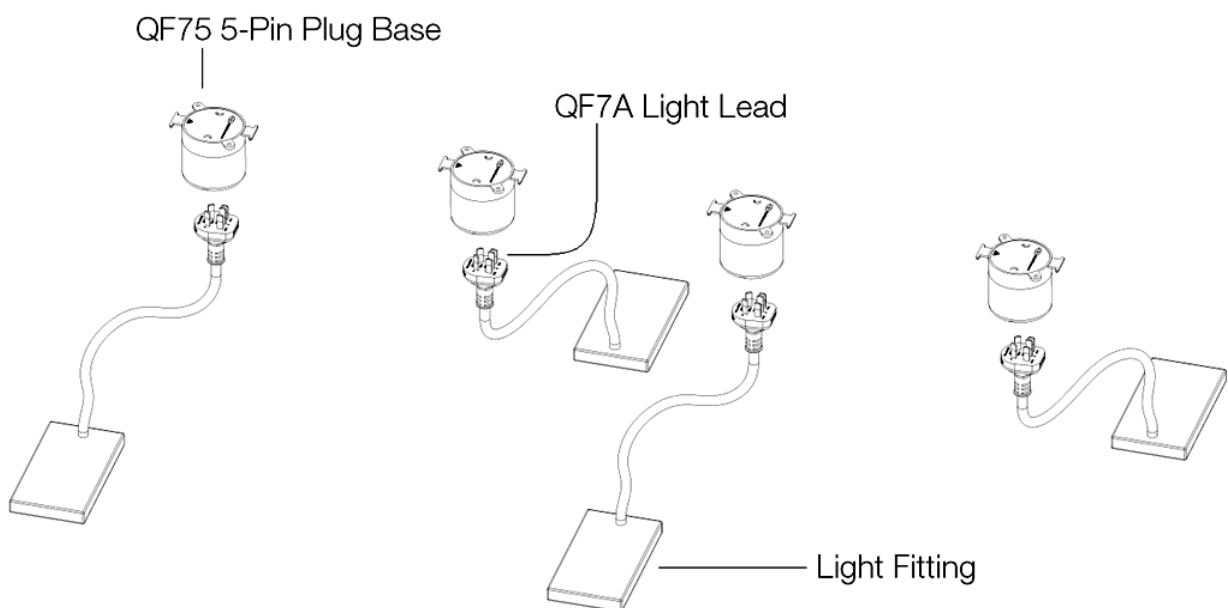
Lighting Coupler Common Configuration



Linkable Socket Adaptor Common Configuration

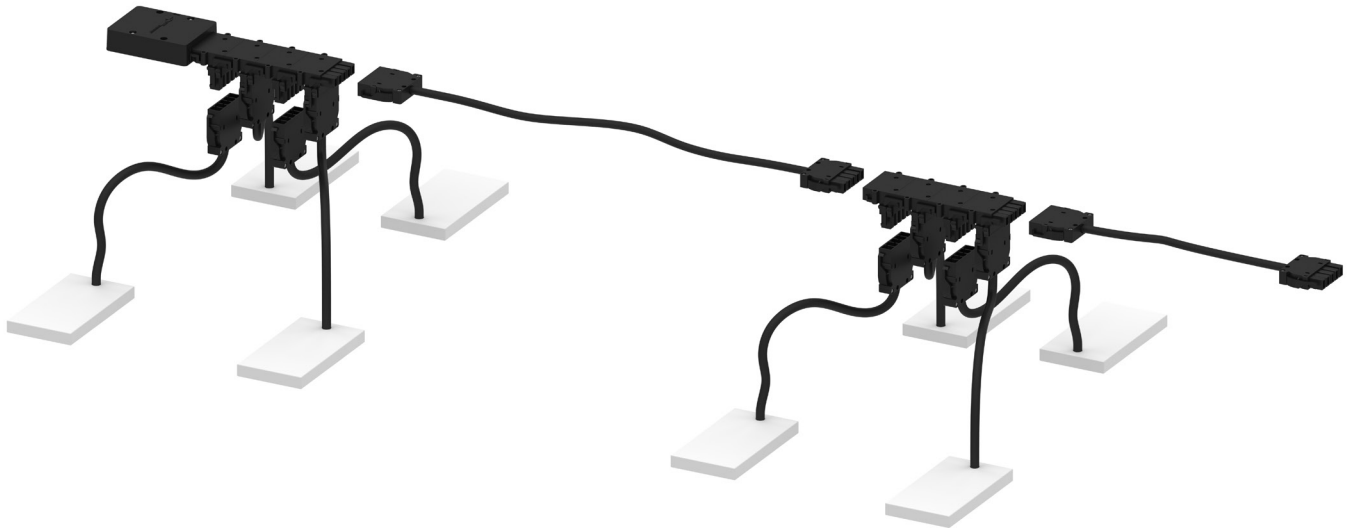


Pin Plug Base Common Configuration

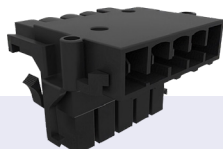


CMS Quick Flex T-Piece Solution

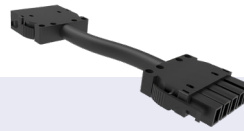
Standard 5-Core Application



QF1L
Starter Socket



A5T
T-Piece Adaptors

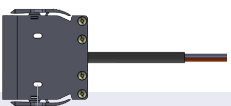


QFP2
Interconnecting Leads
5 Core (5 x 1.0mm)

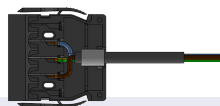


QFP3AT
Free end light leads
5 Core (5 x 1.0mm)

Emergency Fittings



QFP3IT
Free End Light Leads
3 Core (3 x 1.0mm)



QFP3DAT
Free End Light Leads
2 Core (2 x 1.0mm)

Product Details

Standard 5-Core Application

Starter Socket

QF1BK	5 Pole Starter Socket
--------------	-----------------------

T-Piece Adaptors

A5TBK	5 Pole T Piece Adaptor (Used with QF3A Light leads) - Black
B5TBK	5 Pole T Piece Adaptor (used with QF6) - Black

Interconnecting Leads - 5-Core (3x 2.5²mm, 3x 1.5²mm)

QFP2-20BK	BFP PVC 2000mm 5 Pole Interconnecting Lead - 3x 2.5 ² mm, 2x 1.5 ² mm - Black
QFP2-25BK	BFP PVC 2500mm 5 Pole Interconnecting Lead - 3x 2.5 ² mm, 2x 1.5 ² mm - Black
QFP2-30BK	BFP PVC 3000mm 5 Pole Interconnecting Lead - 3x 2.5 ² mm, 2x 1.5 ² mm - Black
QFP2-35BK	BFP PVC 3500mm 5 Pole Interconnecting Lead - 3x 2.5 ² mm, 2x 1.5 ² mm - Black
QFP2-40BK	BFP PVC 4000mm 5 Pole Interconnecting Lead - 3x 2.5 ² mm, 2x 1.5 ² mm - Black
QFP2-50BK	BFP PVC 5000mm 5 Pole Interconnecting Lead - 3x 2.5 ² mm, 2x 1.5 ² mm - Black
QFP2-60BK	BFP PVC 6000mm 5 Pole Interconnecting Lead - 3x 2.5 ² mm, 2x 1.5 ² mm - Black

Free End Light Leads (5x 1.0²mm)

QFP3AT-15BK	BFP PVC 1500mm 5 Pole Light Lead Free End to TAG Plug (Tinned) - 5x 1.0 ² mm - Black
QFP3AT-20BK	BFP PVC 2000mm 5 Pole Light Lead Free End to TAG Plug (Tinned) - 5x 1.0 ² mm - Black
QFP3AT-25BK	BFP PVC 2500mm 5 Pole Light Lead Free End to TAG Plug (Tinned) - 5x 1.0 ² mm - Black

Emergency Fittings

Free End Light Leads - 3-Core (3x 1.0²mm)

QFP3IT-25BK	BFP PVC 2500mm 5 Pole Light Lead Free End to TAG Plug - 3x 1.0 ² MM - Black
--------------------	--

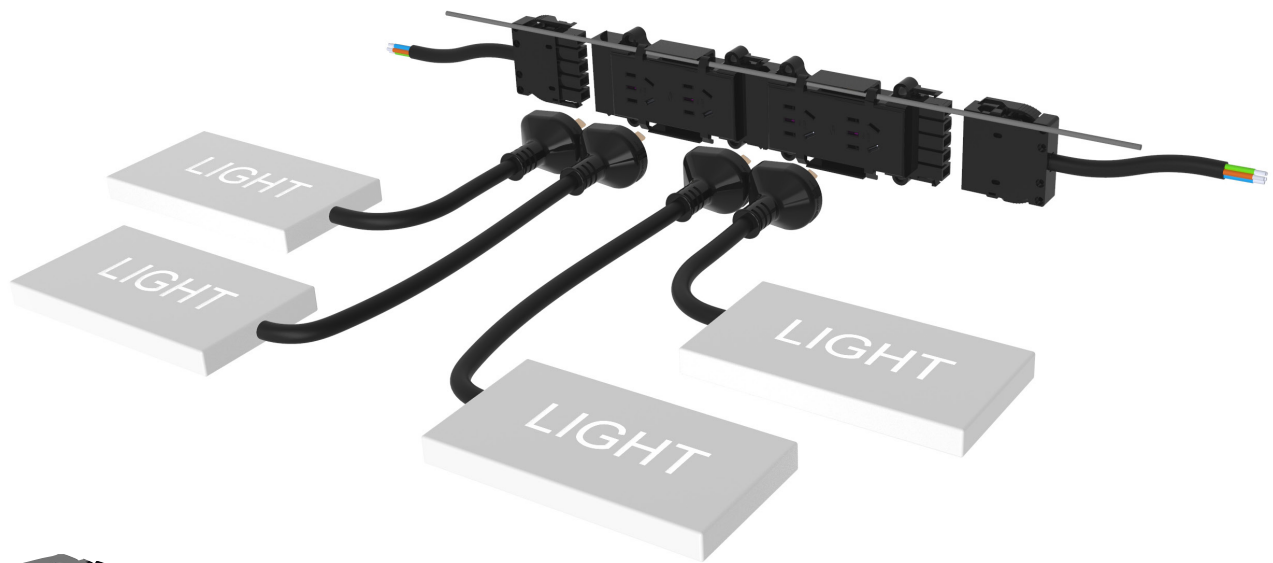
Free End Light Leads - 2-Core (2x 1.0²mm)

QFP3DAT-25BK	BFP PVC 2500mm 5 Pole Light Lead Free End to TAG Plug - 2x 1.0 ² MM - Black
---------------------	--

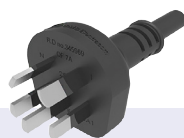
5-Pole Linkable Socket

The CMS Quick Flex QF75-02 provides a simplified solution for creating a modular DALI, DSI, CBus or BMS backbone allowing for direct retrofit of a 3-pin install, whilst providing the foundation for future intelligent lighting fit outs.

The 5-pin outlet also directly accepts the retrofit of AS/NZS 3112 standard 3-pin plugs for existing installations with the option to upgrade to an intelligent lighting control system in the future.



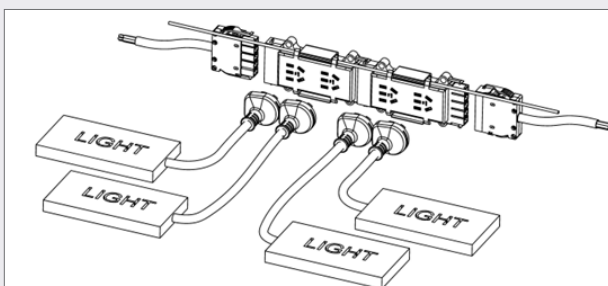
QF75-02
Dual Socket
10amp 250V 5-Pin Socket



QF7AT
5-Pin Light Lead
10amp 5 x 1.0mm

Key Features

- » QF7A Light lead/5-pin plugs together with QF2 interconnecting leads.
- » Can be used together with CMS adaptors and installation couplers.
- » The CMS Quick Flex QF72-02 socket Daisy-chains multiple luminaires into a service outlet.
- » Provides flexible installation options catering to any application with the option of both hardwired and continuous-line mounting.
- » A flexible, time-saving and cost-effective solution for new or planned intelligent lighting applications.



Product Details

Linkable Socket

QF75-02BK	Dual Socket 10amp 250V 5 Pin Socket
------------------	-------------------------------------

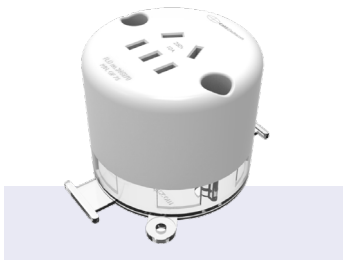
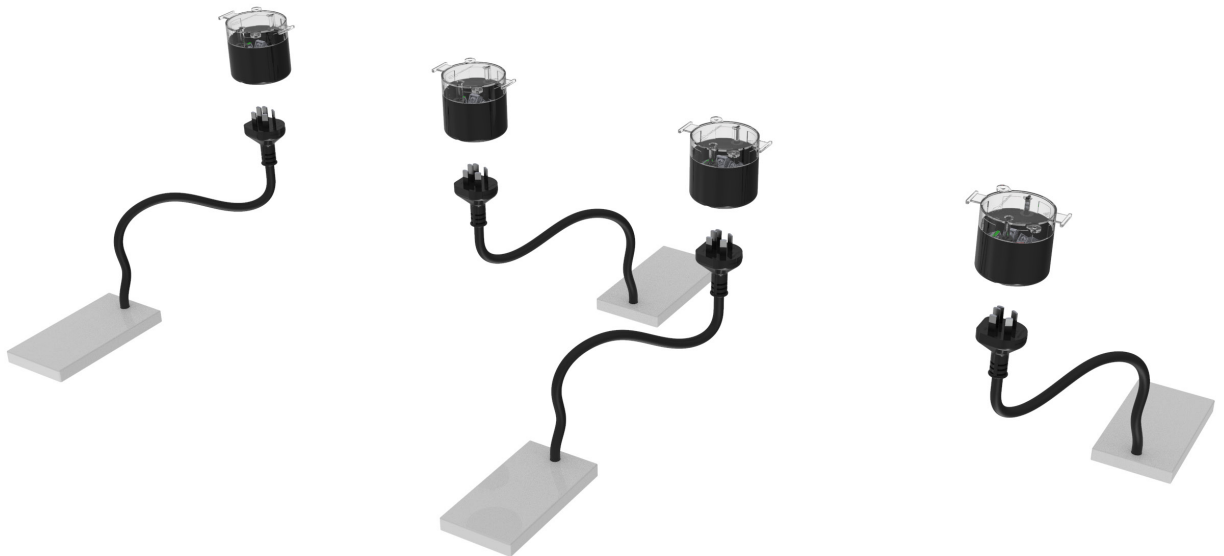
Light leads (5x 1.0²mm)

QF7AT-25BK	2500mm 5 Pin ROHS Light Lead 10amp 5x 1.0mm ² - Black
QF7AT-100BK	10,000mm 5 Pin ROHS Light Lead 10amp 5x 1.0mm ² - Black
QF7AT-25WT	2500mm 5 Pin ROHS Light Lead 10amp 5x 1.0mm ² - White
QF7AT-100WT	10,000mm 5 Pin ROHS Light Lead 10amp 5x 1.0mm ² - White

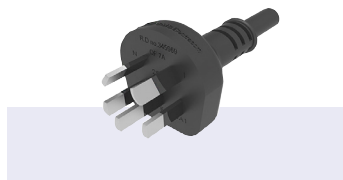
5-Pole Plug & Socket

CMS Quick Flex series of structured cabling and hardwired solutions are designed to suit DALI addressable lighting systems requiring 5 core cabling.

The CMS QF75 remains the only DALI plug base that is backwards compatible with standard 3-pin 10 amp plugs, catering for applications with mixed fittings, as well installations seeking a future-proof-able layout.



QF75MK2
Single 10Amp 250V
5-Pin Socket



QF7AT
5-Pin Light Lead
10amp 5 x 1.0mm

Key Features

- » Flat positioned terminal block for easieron-site termination.
- » Clear mounting plate with holes for screw mounting and side flanges for catenary installation.
- » Break-off slots located all around the unit for convenient positioning.
- » Designed to accept both DALI and standard AS/NZS 3-Pin flex and plugs.



Product Details

Pin Hardwired Plugbase

QF75MK2**	Single 10Amp 250V 5-Pin Socket
------------------	--------------------------------

Light leads

QF7A-25BK	2500mm 5 Pin ROHS Light Lead 10amp 5x 1.0mm ² - Black
QF7A-100BK	10,000mm 5 Pin ROHS Light Lead 10amp 5x 1.0mm ² - Black
QF7A-25WT	2500mm 5 Pin ROHS Light Lead 10amp 5x 1.0mm ² - White
QF7A-100WT	10,000mm 5 Pin ROHS Light Lead 10amp 5x 1.0mm ² - White