

POP-UP MODULE

In-Desk Module





POP-UP MODULE

Tiny, Versatile and Powerful

The Pop-Up In-Desk Module delivers functional access to Power and USB Fast Charging outlets, combining sleek design with while maintaining a clean, clutter-free surface when not in use.

It is ideal for a variety of environments including workstations, collaboration spaces and dynamic training rooms. With customisable configurations, it can be designed to suit the specific requirements of any workspace, whether in a commercial office, hospitality setting, or residential space.

Colours Available

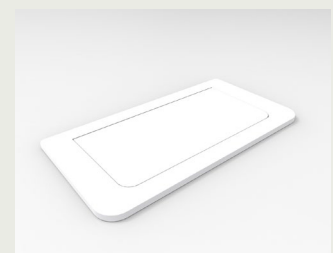
White Black

Key Features

- Spring mechanism enables touch to open/close
- Clean and unobtrusive profile when retracted
- Drops into a simple rectangular cut-out
- Compatible with a range of CMS outlet solutions
- Fully segregated for Power and/or USB







Pop Up - Lid Open



Pop-Up - Lid Closed

Product Details

	PU02R10D**	Pop-Up c/w 2x Auto Switched GPO (Rotated) Incl. 1000mm Tag Lead & L3D Splitter (Cut-Out: 200mm x 100mm)
	PU02RG15**	Pop-Up c/w 2x Auto Switched GPO (Rotated) Incl. 1500mm Lead With 3 Pin Plug (Cut-Out: 200mm x 100mm)
	PU01RU10D**	Pop-Up c/w 1x Auto Switched GPO With 2 x USB-A Fast-Charge Outlets (30W Shared) Incl. 1000mm Tag Lead & L3D Splitter (Cut-Out: 200mm x 100mm)
	PU01RUG15**	Pop-Up c/w 1x Auto Switched GPO With 2 x USB-A Fast-Charge Outlets (30W Shared) Incl. 1500mm Lead With 3 Pin Plug (Cut-Out: 200mm x 100mm)
	PU01RUAC310D**	Pop-Up c/w 1x Auto Switched GPO With USB A/C Fast-Charge Outlets (30W Shared) incl. 1000mm Tag Lead & L3D Splitter (Cut-Out: 200mm x 100mm)
	PU01RUAC3G15**	Pop-Up c/w 1x Auto Switched GPO With USB A/C Fast-Charge Outlets (30W Shared) Incl. 1500mm Lead With 3 Pin Plug (Cut-Out: 200mm x 100mm)
	PU01RUAC6510D**	Pop-Up c/w 1x Auto Switched GPO With USB A/C Fast-Charge Outlets (65W shared) Incl. 1000mm Tag Lead & L3D Splitter (Cut-Out: 200mm x 100mm)
	PU01RUAC65G15**	Pop-Up c/w 1x Auto Switched GPO with USB A/C Fast-Charge Outlets (65W shared) Incl. 1500mm Lead With 3 Pin Plug (Cut-Out: 200mm x 100mm)
	PU01RUCC3**	Pop Up 1x GPO Rotated, 1x USB C/C Fast Charging (30W Shared), 500mm TAG Lead (Cut-Out: 200mm x 100mm)
	PU01RUCC6510D**	Pop Up 1x GPO Rotated, 1x USB C/C Fast Charging (65W Shared), 1000mm TAG Lead (Cut-Out: 200mm x 100mm)

Notes:

- ** Denotes Standard Colours: Black (BK), White (WT).