
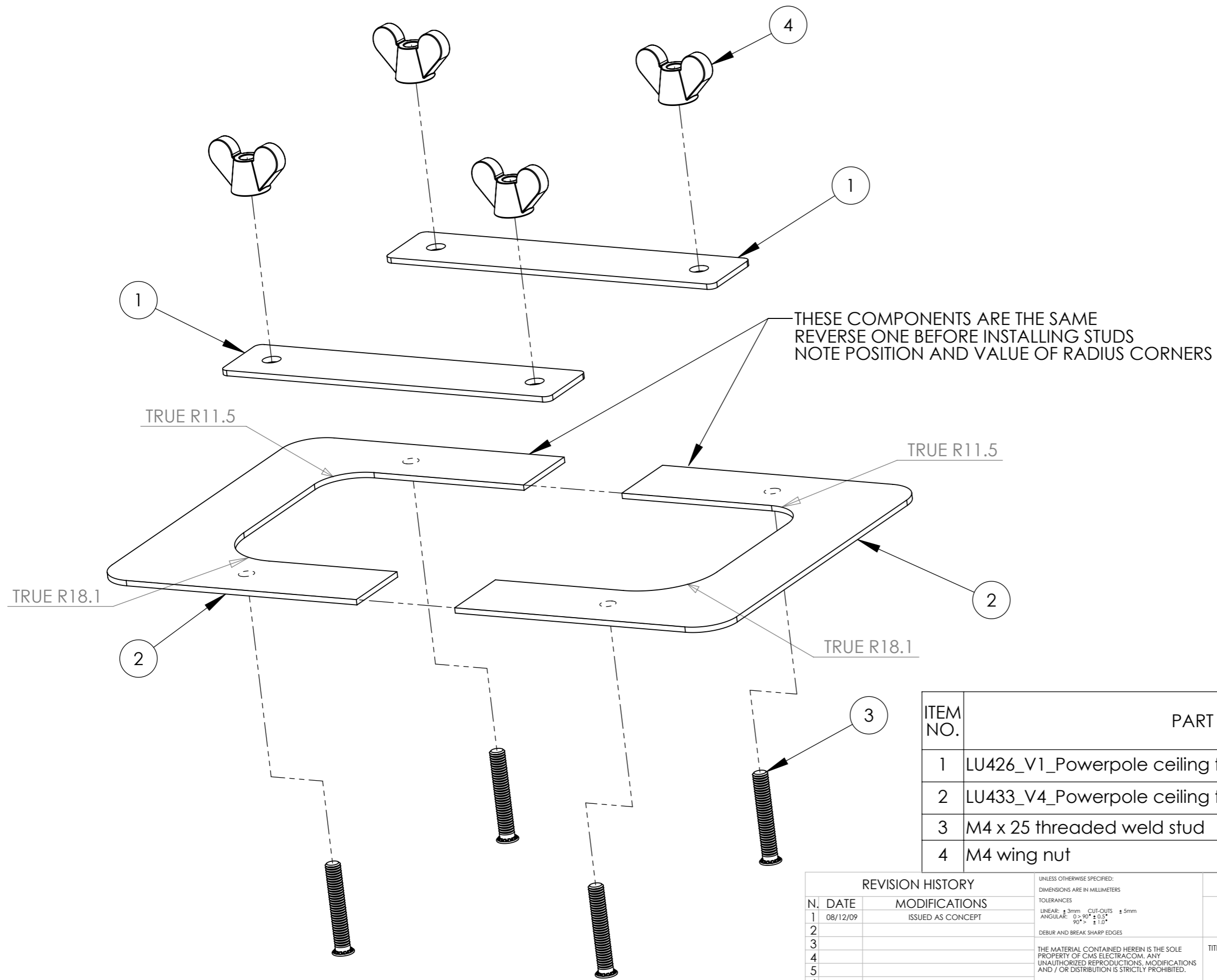



REVISION HISTORY		UNLESS OTHERWISE SPECIFIED: DIMENSIONS ARE IN MILLIMETERS		DO NOT SCALE DRAWING		REVISION	
N.	DATE	MODIFICATIONS	TOLERANCES				1
1	08/12/09	ISSUED AS CONCEPT	LINEAR: ± 3mm CUT-OUTS ± 5mm				
2			ANGULAR: 0°-90° ± 0.5°				TITLE:
3			90°-> ± 1.0°		Powerpole ceiling flange		
4			DEBUR AND BREAK SHARP EDGES				
5			THE MATERIAL CONTAINED HEREIN IS THE SOLE PROPERTY OF CMS ELECTRACOM. ANY UNAUTHORIZED REPRODUCTIONS, MODIFICATIONS AND / OR DISTRIBUTION IS STRICTLY PROHIBITED.		DWG NO.		LU-424
6			NAME		PART NO.		A3
7			DATE		4033801		
8			Lucky		SCALE		1:1
9			MATERIAL:		SHEET		1 OF 2
10			1.5mm Steel				
11			FINISH:				
12			Powder coat Dulux New Bright White				
13							



ITEM NO.	PART NUMBER	QTY.
1	LU426_V1_Powerpole ceiling flange lock piece	2
2	LU433_V4_Powerpole ceiling flange half	2
3	M4 x 25 threaded weld stud	4
4	M4 wing nut	4

REVISION HISTORY		UNLESS OTHERWISE SPECIFIED: DIMENSIONS ARE IN MILLIMETERS		DO NOT SCALE DRAWING		REVISION 1	
N.	DATE	TOLERANCES				TITLE: Powerpole ceiling flange	
1	08/12/09	ISSUED AS CONCEPT					
2		LINEAR: ± 3mm CUT-OUTS ± 5mm		THE MATERIAL CONTAINED HEREIN IS THE SOLE PROPERTY OF CMS ELECTRACOM. ANY UNAUTHORIZED REPRODUCTIONS, MODIFICATIONS AND / OR DISTRIBUTION IS STRICTLY PROHIBITED.		DWG NO. LU-424	
3		ANGULAR: 0° > 90° ± 0.5°		NAME		PART NO. 4033801	
4		90° > ± 1.0°		DATE		SCALE 2:1	
5		DEBUR AND BREAK SHARP EDGES		Lucky		SHEET 2 OF 2	
6		MATERIAL:		1.5mm Steel		A3	
7		FINISH:		Powder coat Dulux New Bright White			
8							
9							
10							
11							
12							
13							