

ECHO SERIES

In Table Power, USB & Wireless Charging





ETUF1W05GWT shown above with USB charging option 30W output A + C

ECHO SERIES

In Table Power, USB & Wireless Charging

CMS Echo series delivers the latest charging technology to empower, engage and connect spaces within the workplace. Echo easily integrates into personal workstations, collaborative spaces and soft-seating.

Echo is available in 3 shell sizes Single, Duo and Trio, describing the number of modules each shell can accommodate. Echo can be equipped with any combination of USB A + C, wireless charging and or power. Shell depths are 46mm's with top-side installation and are fixed by adjustable toggles.

Features & Benefits

- » Minimalistic surface design blends into any surface.
- » Fast-charging include 30W USB-C PD or 15W wireless.
- » Fusing options of either 3.15A or 5A.
- » Available to be configured with GST or a BS13A plug.
- » Optional in-line RCD protection.
- » Surface installation suited to soft seating and custom joinery.
- » Standard colours of Black or White.

Configuration Examples



Echo Solo

ECBSF50105G** - GST
ECBSF501015** - BS13A



Echo Duo

EDB1U05G** - GST
EDB1U15** - BS13A



Echo Trio

ETUF1W05G** - GST
ETUF1W15** - BS13A

Refer to our Standard Configurations section to see multiple further options.

Finishes Available

 White (WT **)

 Black (BK **)

Standard Configurations

ECHO SOLO	
ECBSF50105G**	1 Power - 5A. 0.5m Starter lead - GST.
ECBSF501015**	1 Power - 5A. 1.5m Starter lead - BS13A.
ECUAC305G**	USB A + C PD fast charge - 30W. 0.5m Starter lead – GST.
ECUAC315**	USB A+C PD fast charge - 30W. 1.5m Starter lead – BS13A..
ECW05G**	Wireless fast charge - 15W. 0.5m Starter lead – GST.
ECW15**	Wireless fast charge - 15W. 1.5m Starter lead - BS13A.

ECHO DUO	
EDB1B105G**	2 Power - 5A. 0.5m Starter lead - GST.
EDB1B110**	2 Power - 5A. 1.5m Starter lead – BS13A.
EDB1U05G**	1 Power – 5A. Dual USB charger 30W - A + C . 0.5m Starter lead - GST.
EDB1U15**	1 Power – 5A. Dual USB charger 30W - A + C . 1.5m Starter lead – BS13A.
EDB1W05G**	1 Power – 5A. Wireless fast-charge - 15W. 0.5m Starter lead - GST.
EDB1W15**	1 Power – 5A. Wireless fast-charge - 15W. 1.5m Starter lead – BS13A.

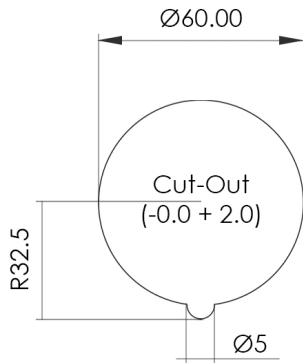
ECHO TRIO	
ETF1F1F105G**	3 Power - 5A. 0.5m Starter lead - GST.
ETF1F1F115**	3 Power - 5A. 1.5m Starter lead – BS13A.
ETF1UF105G**	2 Power – 5A. Dual USB charger 30W - A + C . 0.5m Starter lead - GST.
ETF1UF115**	2 Power – 5A.. Dual USB charger 30W - A + C. 1.5m Starter lead – BS13A.
ETF1WF105G**	2 Power – 5A. Wireless fast-charge - 15W. 0.5m Starter lead - GST.
ETF1WF115**	2 Power – 5A. Wireless fast-charge - 15W. 1.5m Starter lead – BS13A.
ETUF1W05G**	1 Power – 5A. Dual USB charger 30w - A + C . Wireless fast-charge -15W. 0.5m Starter lead – GST.
ETUF1W15**	1 Power – 5A. Dual USB charger 30w - A + C . Wireless fast-charge -15W. 1.5m Starter lead – BS13A.

Notes:

- » Alternative lead lengths available on request.
- » An example cut out for each size is available on the next page.

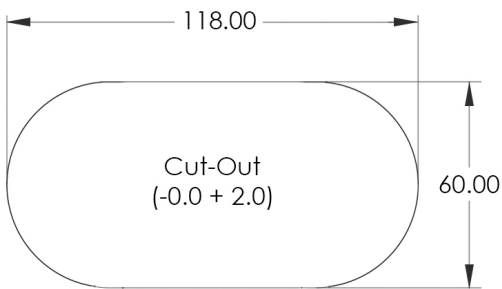
Cut Out - Examples

Echo Solo Reference Only

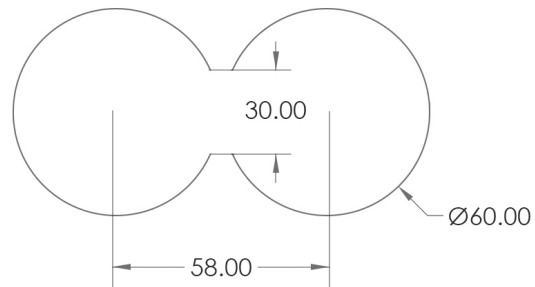


Routing Cutout - Ø60mm (Tolerance -0/+2mm)

Echo Duo Reference Only

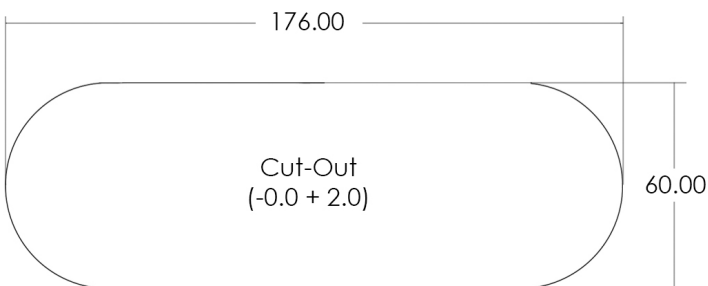


Routing Cutout - 118mm x 60mm (Tolerance -0/+2mm)

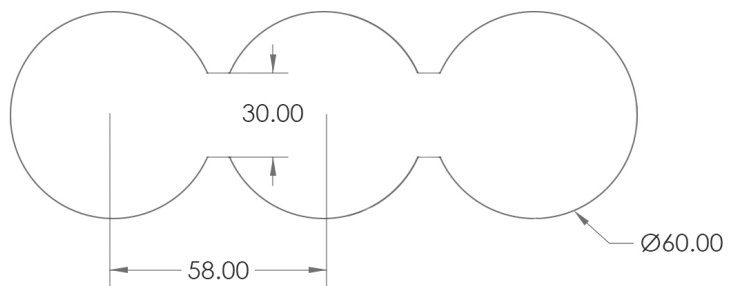


Manual Holesaw Cutout - 2 off 60mm Holes - 58mm Pitch - Cut Flat 30mm (Tolerance -0/+2mm)

Echo Trio Reference Only



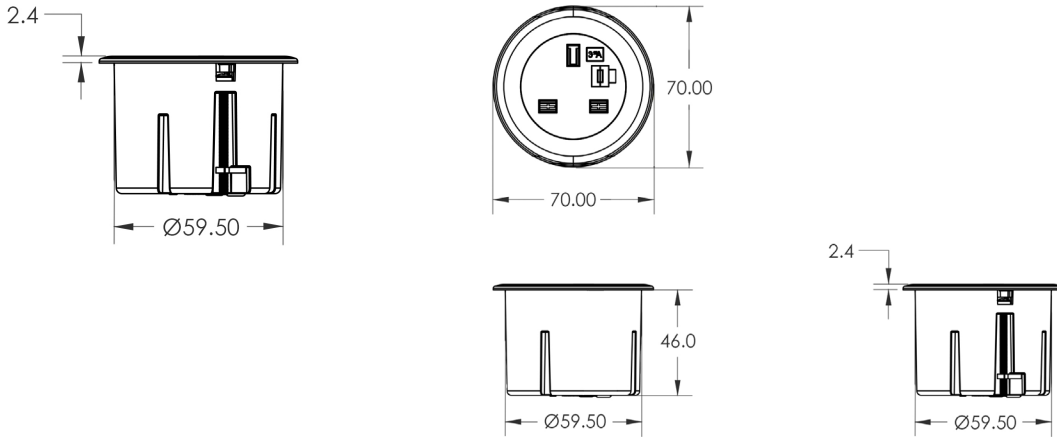
Routing Cutout - 176mm x 60mm (Tolerance -0/+2mm)



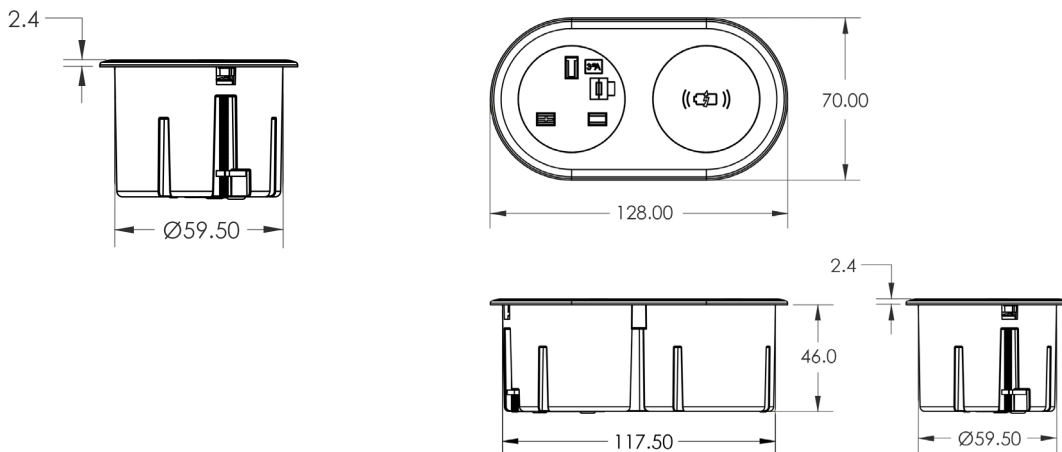
Manual Holesaw Cutout - 3 off 60mm Holes - 58mm Pitch - Cut Flat 30mm (Tolerance -0/+2mm)

Product Drawings - Examples

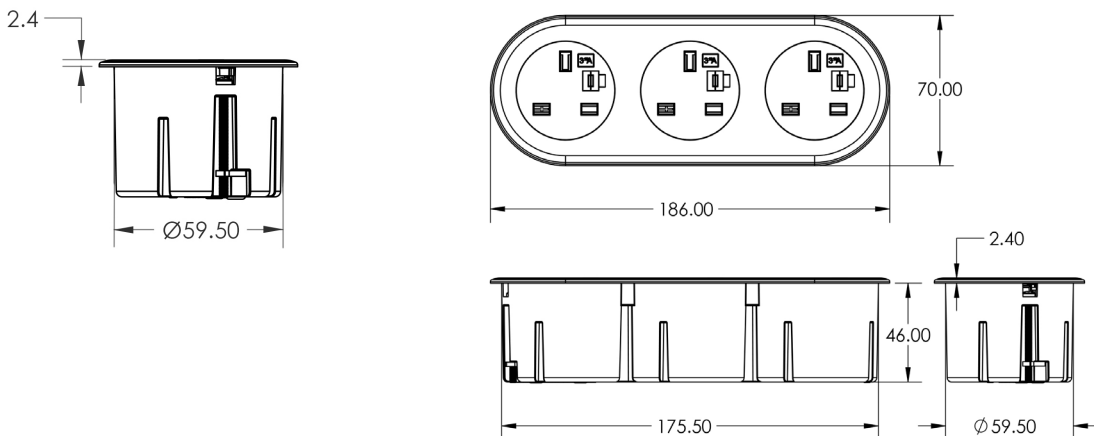
Echo Single
Reference Only



Echo Duo
Reference Only



Echo Trio
Reference Only



Product Specifications

USB 30 Watt A + C

Input	100-240V AC; 50/60Hz, 0.8A
Maximum power	30W
USB outlets	1 x Type-C PD3.0 fast charge
	1 x Type-A standard fast charge
Operating temperature range	0-40C
Compliance	IEC 62368-1, EN 62368-1
	CISPR32:2015, EN55032, EN55035, EN IEC 61000 3-2; 3-3
USB-C PD Specification	
Max standard output with no connected devices in port 1	20V/1.5A; 15V/2A; 9V/3A
Max output with Type-A port engaged	20V/0.75A; 15V/1A; 9V/1.5A
Protocols supported	Power Delivery (PD) 3.0, QC 3.0
USB-A Specification	
Max standard output with no connected devices in port 2	5V/2.1A
Max output with Type-C port engaged	5V/1A
Protocols supported	Fixed Voltage Fast Charge

Wireless Charger

Input	100-240V; 50/60Hz, 0.5A
Maximum output total	5V DC/5W; 9V DC/15W; 12V DC/15W
Operating temperature range	0-40C
Compliance	IEC 60950.1
	CISPR32:2015