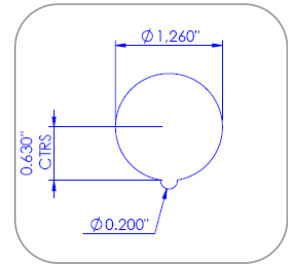


INSTALLATION INSTRUCTIONS

1 CUT OUT

Determine desired orientation of product and cut hole.

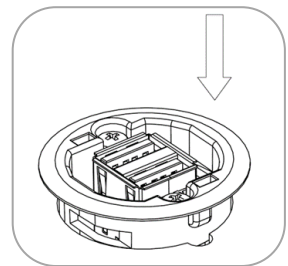
Note: the notch will be parallel to the USB



2 INSERT PRODUCT

Align dimple on housing with notch in hole

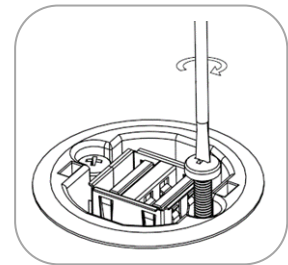
Insert housing into hole



3 TIGHTEN SCREWS

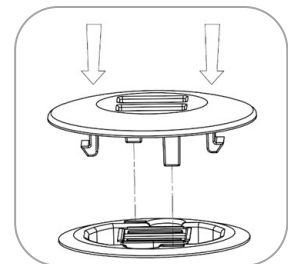
Tighten screws until assembly is secure.

DO NOT OVERTIGHTEN—TIGHTEN BY HAND ONLY



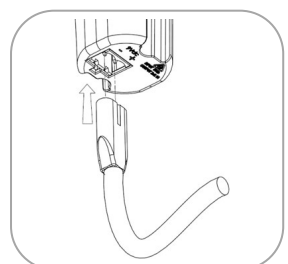
4 CLIP ON COVER

Align clips and push cover into place



5 CONNECT TO POWER

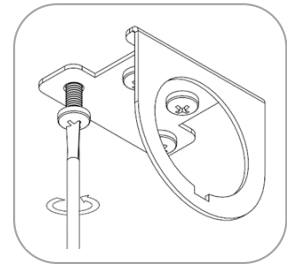
Plug in power supply to underside of assembly



INSTALLATION INSTRUCTIONS

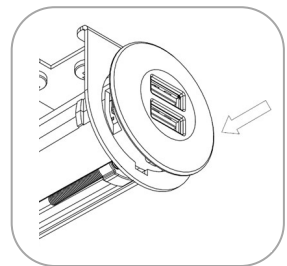
1 ATTACH BRACKET

Attach mounting bracket to fixture/underside of desk using screws provided. Tighten screws until bracket is secure



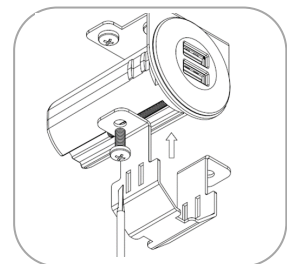
2 MOUNT USB HOUSING

Align dimple on housing with notch in the bracket and insert housing



3 ATTACH FIXING BRACKET

Align rectangular holes in fixing bracket with ribs on side of housing. Fit bracket so that notches engage with ribs. Attach bracket to underside of desk with screws provided



NOTE:

This equipment has been tested and found to comply with the limits for a class B device, pursuant to part 15 of the FCC Rules. These limits are designed to provide reasonable protection against harmful interference in an installation. This equipment generates uses and can radiate radio frequency energy and, if not installed and used in accordance with the instructions, may cause harmful interference to radio communications. However there is no guarantee that interference will not occur in a particular installation.

