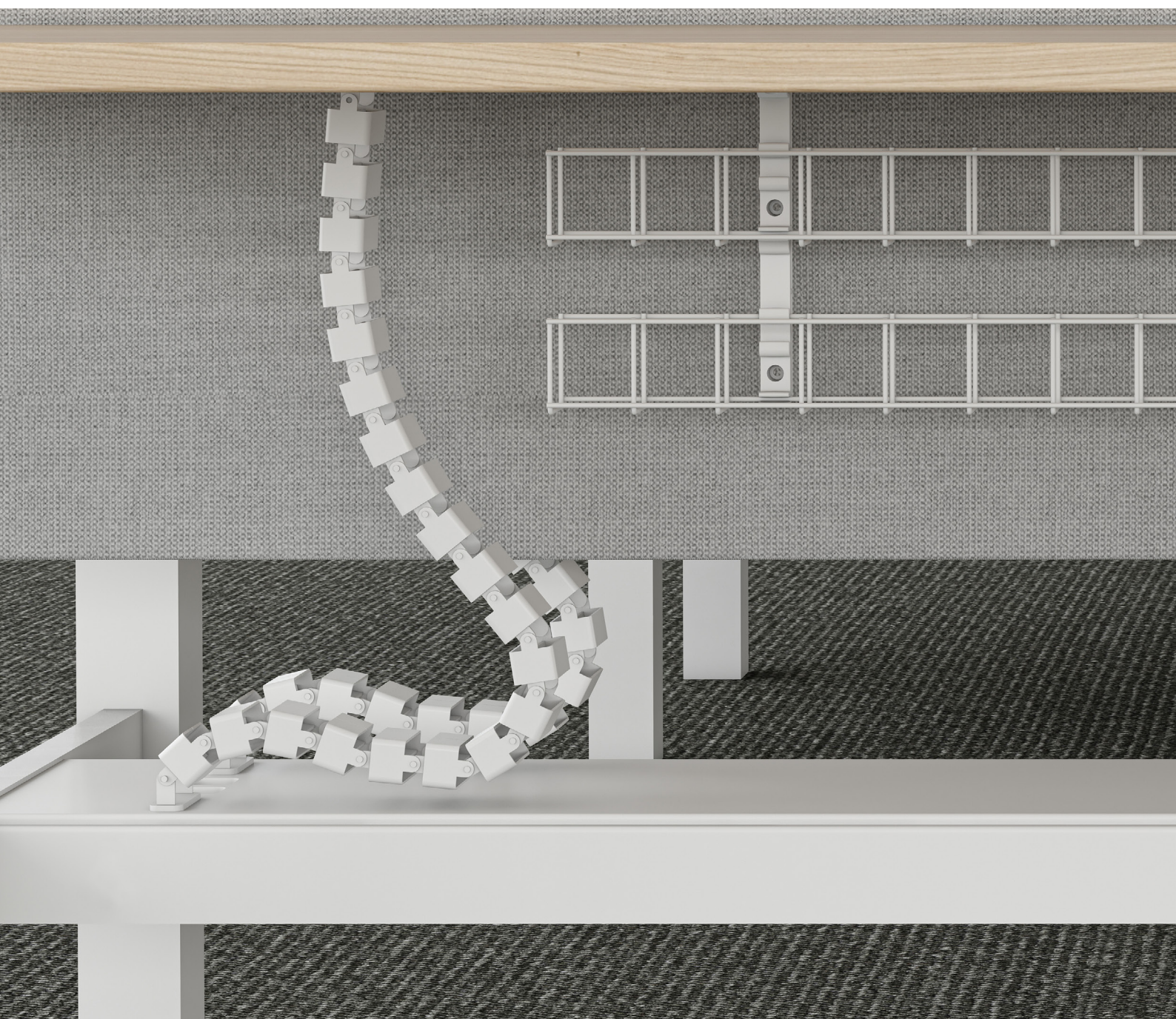


TRAX

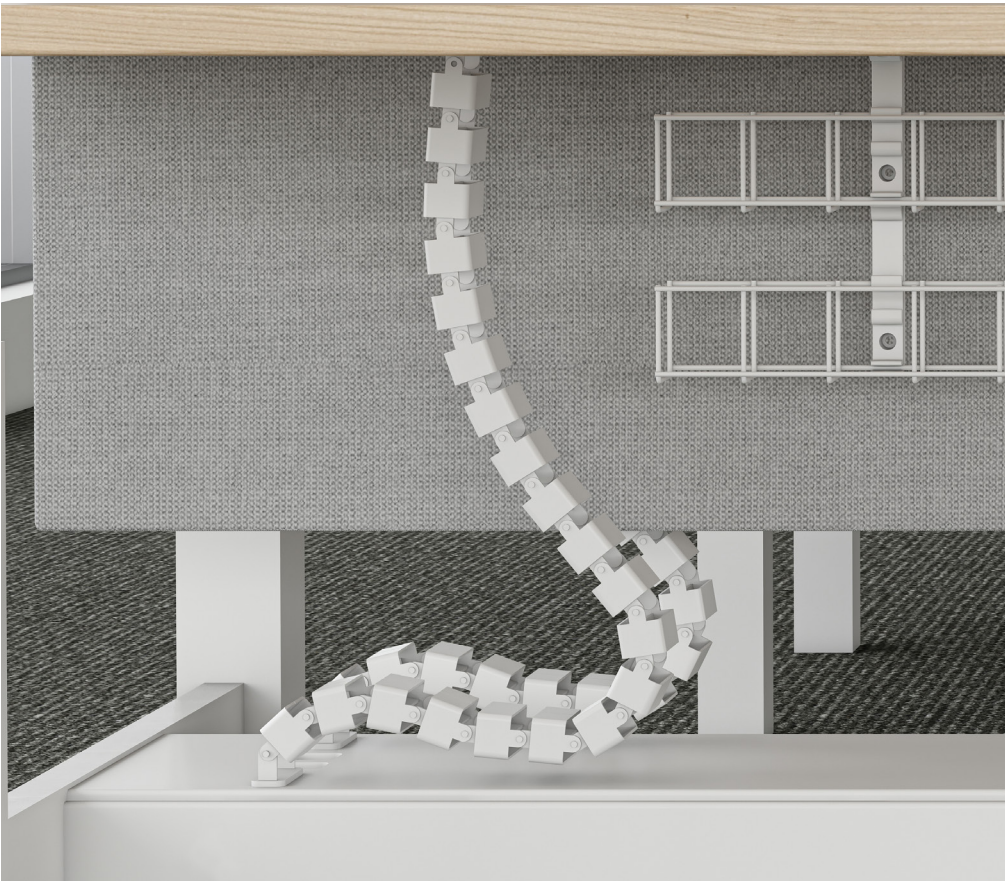
UMBILICAL



TRAX

Height Adjustable Cable Management

CMS Trax umbilical is specifically designed for cable protection when bringing power and data cables in a height adjustable table application. Trax features either single or dual compartment for cable distribution allowing power and data cabling to be run separate or simultaneously when using conduit.

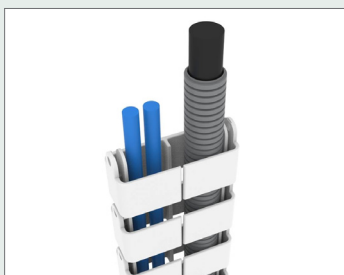


Colors Available

White Black

Key Features

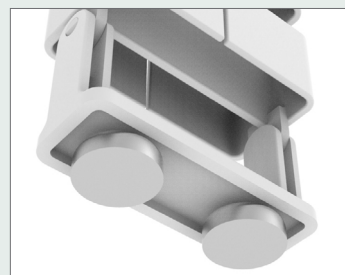
- » Trax is designed for height adjustable workstations
- » Fitted with brackets to connect to the underside of the desk and back to the fixed cable tray below.
- » A magnet set can fit the cable-tray bracket (sold separately)



Single Compartment



Dual Compartment



Magnet Set (TRMGK)

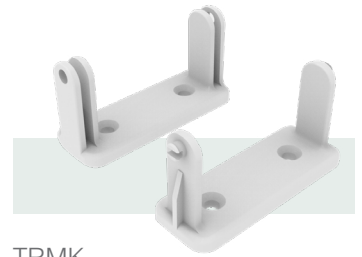
Components



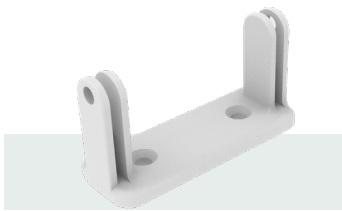
TR5100
Trax single compartment



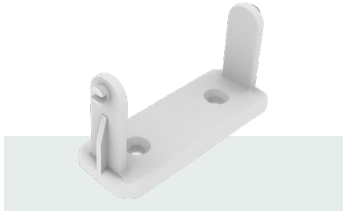
TRD100
Trax dual compartment



TRMK
Mounting kit



TRD
Under-desk mounting bracket



TRB
Mounting bracket.



TRMGK
Magnet set for mounting
base fixing.

Product Details

TRSH12**	Trax Series Single Compartment - 47" long - Cable Tray To Workstation for Height Adjustable Tables, c/w Cable Tray Base Fixing (TRB) and Under-Desk Bracket (TRD)
TRDH12**	Trax Dual Single Compartment - 47" Long - Cable Tray to Workstation for Height Adjustable Tables, c/w Cable Tray Base Fixing (TRB) and Under-Desk Bracket (TRD)

Accessories

TR5100**	Trax Dual Compartment Series 40" Length Only
TRD100**	Trax Single Compartment Series 40" Length Only
TRMK**	Trax Series Mounting Kit - Under-Desk Bracket and Cable Tray Base Fixing
TRD**	Trax Under-Desk Mounting Bracket Only
TRB**	Trax Cable Tray Mounting Bracket Only
TRMGK	Trax Series Magnet Set for Mounting Base Fixing

NOTE:

- Umbilical color: Black (BK), White (WT)
- TRMGK will only fix to steel surfaces