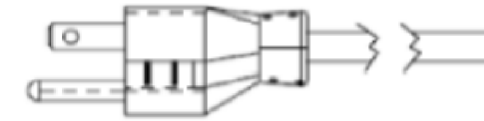


COLOUR VARIATIONS		
PART NUMBER	PLASTIC COMPONENTS	EXTRUSION
WT	WHITE	ANODISED SILVER
BK	BLACK	ANODISED SILVER
BB	BLACK	POWDERCOATED BLACK MANNEX
WW	WHITE	POWDERCOATED WHITE SATIN

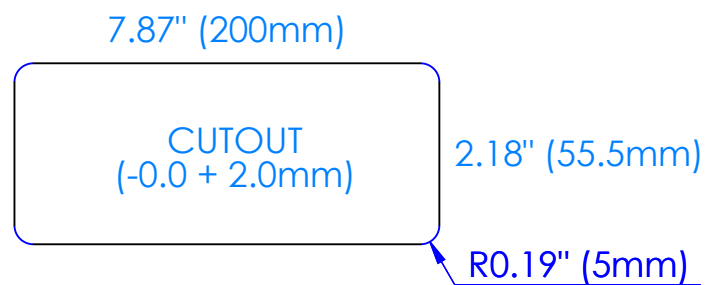
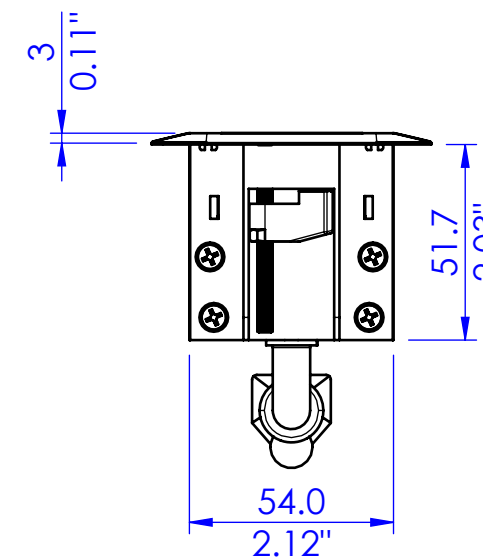
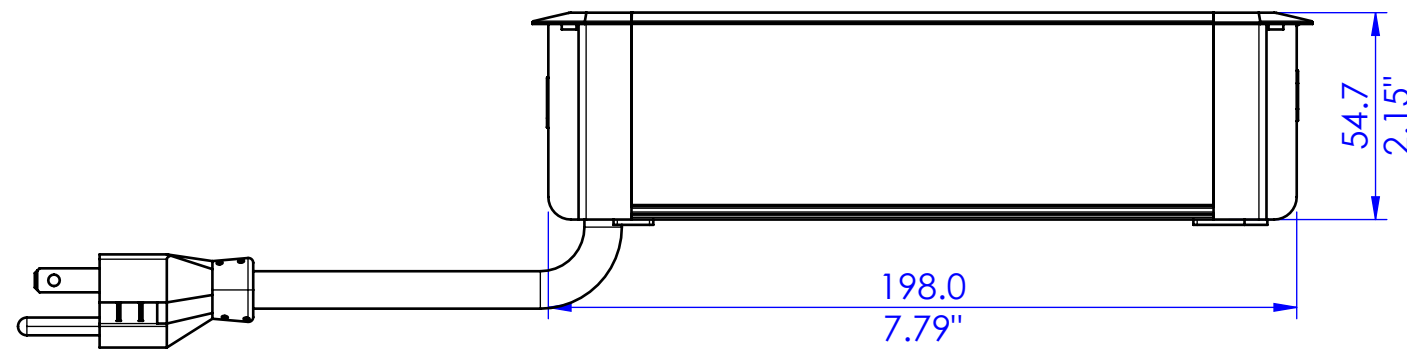
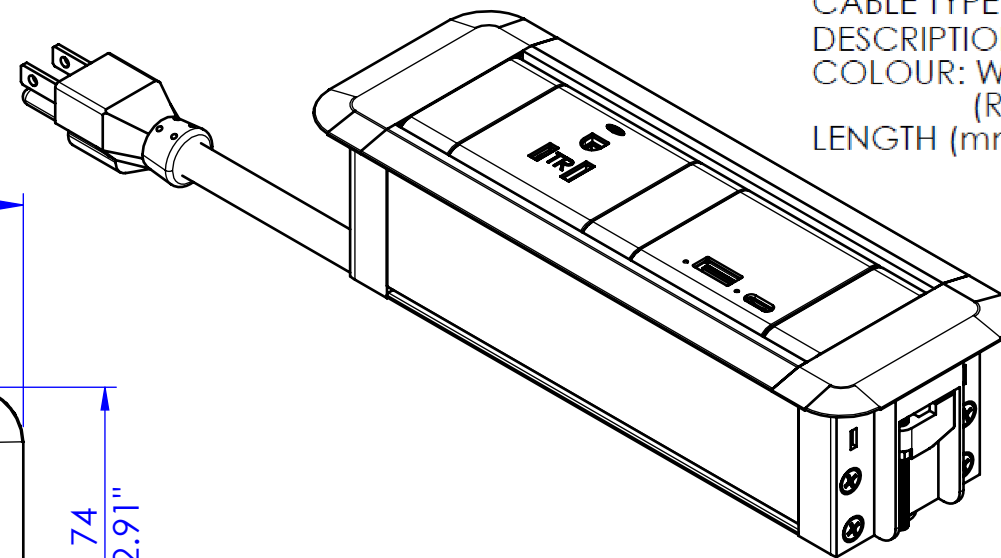
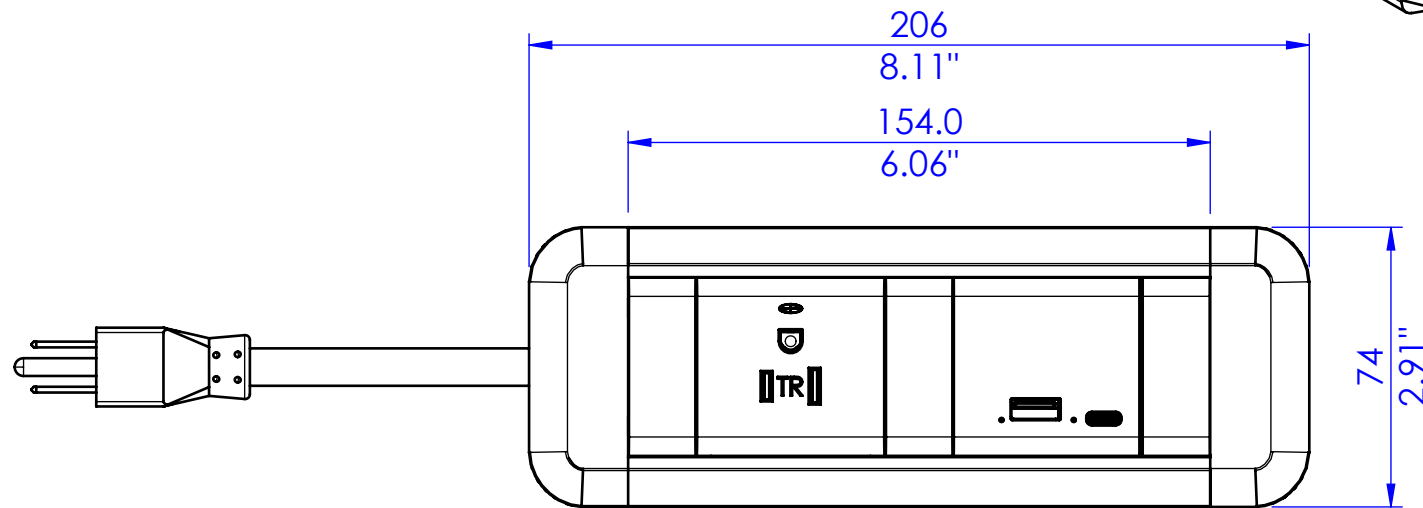
NOTE:



CABLE TYPE: 3 CORE x 2.08mm² (14AWG)
 DESCRIPTION: US PLUG LEAD
 COLOUR: WHITE OR BLACK
 (REFER TO PURCHASE ORDER)

LENGTH (mm):

x	LENGTH
A	1.5FT (457.2mm)
B	3.0FT (914.4mm)
C	4.0FT (1219.2mm)
D	5.0FT (1524mm)
E	6.0FT (1828.8mm)
F	8.0FT (2438.4mm)
G	10.0FT (3048mm)
H	12.0FT (3657.6mm)
I	15.0FT (4572mm)
J	18.0FT (5486.4mm)
K	21.0FT (6400.8mm)
L	24.0FT (7315.2mm)



PART NUMBER: 1CE1U4xXX

NOTE - x - LENGTH A / B / C / D / E / F / G / H / I / J / K / L
 XX - COLOUR - WT / BK / WW / BB

CUSTOMER SIGNATURE:	TOLERANCES UNLESS OTHERWISE STATED: X ±0.5 X.X ±0.2 X.XX ±0.1 X.XXX ±0.05 ANG ±0.5°
MATERIAL: POLYCARBONATE / ALUMINIUM	
FINISH: FINE EDM / ANODISED (POWDER COAT)	
COLOUR: REFER TABLE	

 **CMS Electracom** COPYRIGHT © 2015

TITLE: CENTRA WITH 1 DUBUSRW US SOCKET + 1 SW18UAC3FL

DRAWING: LU37995 **REV: 1** **A3**

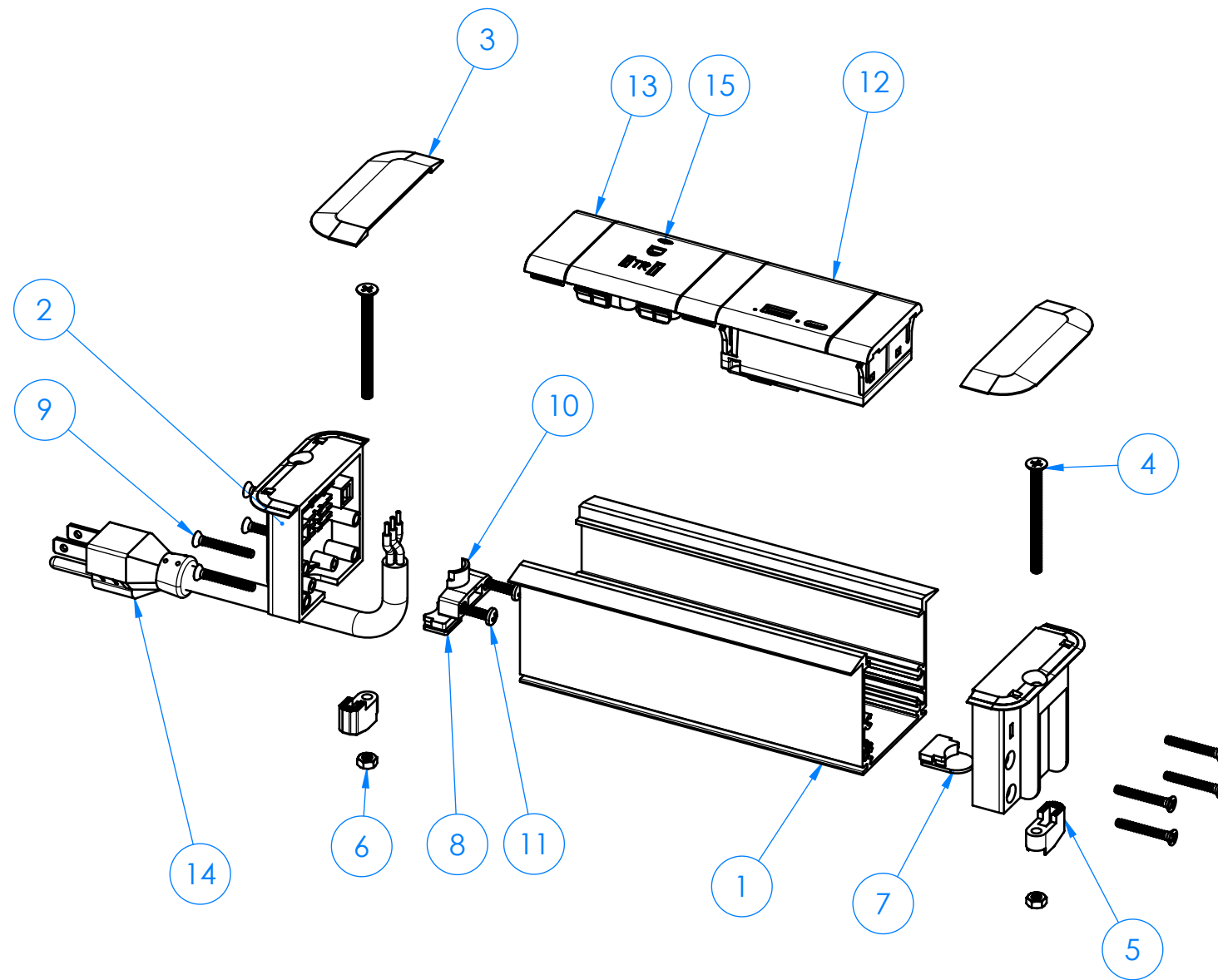
1	RELEASED FOR PRODUCTION	7/4/2021	JB	RG
REV	DESCRIPTION	DATE	DRWN	APPV
REVISIONS				

THIS DRAWING & ASSOCIATED CAD FILES ARE ISSUED IN THE STRICTEST CONFIDENCE AND ARE ONLY TO BE USED IN THE COMMERCIAL INTERESTS OF CMS ELECTRACOM PTY LTD

DRAWN IN mm TO AS1100 DO NOT SCALE 

SCALE 1:2

SHEET 1 OF 2



ITEM NO.	PART NUMBER	Description	QTY.
1	LU7626	154mm Inline Extrusion	1
2	LU7895	Netbox Endcap	2
3	LU7896	Netbox Endcap Cover	2
4	-	M4 x 50 CSK Machine Screw	2
5	LU2740	Affinity lock tab	2
6	-	M4 Hex Nut	2
7	LU8339	Cable Hole Plug	1
8	LU8338	Cable Support	1
9	-	6G x 1" CSK Self Tapping Screw	8
10	LU21943	hardwire connector for rail endcaps	1
11	-	6G x 1/2" Pan Head Self Tapping Screw	2
12	LU23306	30W USB AC CHARGER HARDWIRED	1
13	SW18A CDG	18mm TILE	2
14	LEAD	REFER TO PURCHASE ORDER	1
15	LU33408	DUBUSRW US SOCKET WITH SHUTTER	1

REFERENCE DRAWINGS

Drawing	Description
LU36860	Wiring Diagram for US GPO + USB Charger
LU28341	Earth bonding assembly

CUSTOMER SIGNATURE:
MATERIAL: POLYCARBONATE / ALUMINIUM
FINISH: FINE EDM / ANODISED (POWDER COAT)
COLOUR: REFER TABLE
THIS DRAWING & ASSOCIATED CAD FILES ARE ISSUED IN THE STRICTEST CONFIDENCE AND ARE ONLY TO BE USED IN THE COMMERCIAL INTERESTS OF CMS ELECTRACOM PTY LTD

TOLERANCES UNLESS OTHERWISE STATED:

X ±0.5
X.X ±0.2
X.XX ±0.1
X.XXX ±0.05
ANG ±0.5°

DRAWN IN mm TO AS1100 DO NOT SCALE

 **CMS Electracom** COPYRIGHT © 2015

TITLE: CENTRA WITH 1 DUBUSRW US SOCKET + 1 SW18UAC3FL

DRAWING: LU37995	REV: 1	A3
SCALE 2:5	SHEET 2 OF 2	