

**IMPORTANT: DO NOT** connect the docking station prior to updating the drivers on your desktop / laptop.

## Installing the driver

### Windows® OS

1. Visit website <https://cmselectra.com/au/product/tech-hub/>
2. Scroll down to the Download Drivers section and download the appropriate driver for your Operating System version
3. Double click the downloaded file to start the installation.
4. Click **Finish** to complete the installation if prompted.

### Mac® OS

1. Visit website <https://cmselectra.com/au/product/tech-hub/>
2. Scroll down to the Download Drivers section and download the appropriate driver for your Operating System version
3. Double click the **dmg** file to start the installation.
4. If the **License agreement** prompted, click **Continue** to start the driver installation.
5. Click **Restart** to complete the installation if prompted.

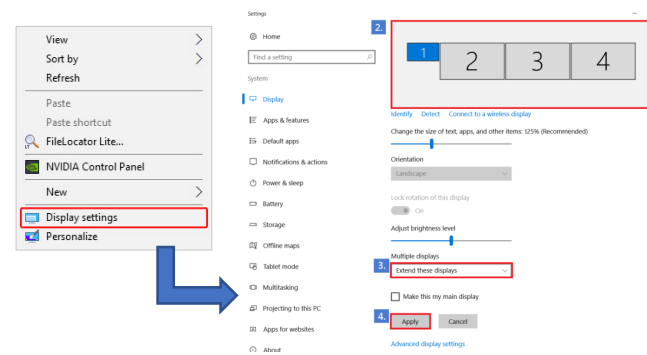
## Connecting the Tech hub

1. Connect Tag connector / C3 connector to the power enclosure.
2. Connect monitors and peripheral devices to the dock
3. Connect the dock to your laptop after driver installation is complete.
4. Windows will start installing the device automatically.
5. Follow the on-screen instructions until the installation is complete.

## To set the Display Mode

Extra DisplayPort and HDMI monitors can be connected through the docking station directly. Once the extra monitors are connected, they can be configured to use **Mirror Mode**, **Extend Mode** or **Primary Display**.

Position the mouse anywhere on the desktop, right click and select **Display settings**.



Alternatively, click utility icon  in the **Windows System Tray**, and then select **Display Link manager** or **Video Setup**.

The quick installation guide describes only the basic instructions on installation. For more information, please refer to the **User Manual** on <https://cmselectra.com/au/product/tech-hub/>